



**Model Number**

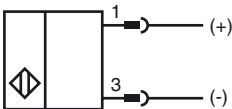
**NBB15-30GM60-B3B-V1**

AS-Interface

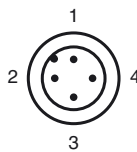
**Features**

- 15 mm embeddable
- Cylindrical
- A/B slave with extended addressing possibility for up to 62 slaves
- NO/NC selectable
- On/Off delay (disconnectable)

**Connection**



**Pinout**



**Accessories**

**BF 30**

Mounting flange, 30 mm

**EXG-30**

Quick mounting bracket with dead stop

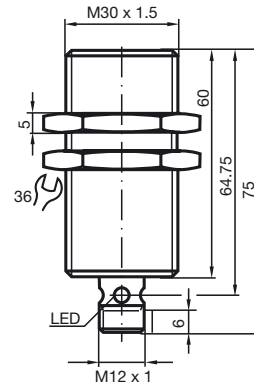
**V1-G-BK0,3M-PUR-U-V1-G**

Connection cable, M12 to M12, PUR cable, 4-pin

**V1-G-BK1M-PUR-U-V1-G**

Connection cable, M12 to M12, PUR cable, 4-pin

**Dimensions**



**Technical Data**

**General specifications**

Switching element function		NO/NC programmable
Rated operating distance	$s_n$	15 mm
Installation		embeddable
Output polarity		AS-Interface
Assured operating distance	$s_a$	0 ... 12.15 mm
Reduction factor $r_{Al}$		0.4
Reduction factor $r_{Cu}$		0.4
Reduction factor $r_{303}$		0.7
Reduction factor $r_{Brass}$		0.5
Slave type		A/B slave
AS-Interface specification		V3.0
Required master specification		$\geq$ V2.1

**Nominal ratings**

Operating voltage	$U_B$	26.5 ... 31.9 V via AS-i bus system
Switching frequency	$f$	0 ... 200 Hz
Hysteresis	$H$	1 ... 15 typ. 5 %
Reverse polarity protected		reverse polarity protected
No-load supply current	$I_0$	$\leq$ 25 mA
Indication of the switching state		dual-LED, yellow
Fault indication		dual-LED, red

**Functional safety related parameters**

MTTF <sub>d</sub>		1700 a
Mission Time ( $T_M$ )		20 a
Diagnostic Coverage (DC)		0 %

**Ambient conditions**

Ambient temperature		-25 ... 70 °C (-13 ... 158 °F)
Storage temperature		-40 ... 85 °C (-40 ... 185 °F)

**Mechanical specifications**

Connection type		Device connector M12 x 1 , 4-pin
Housing material		brass, nickel-plated
Sensing face		PBT
Protection degree		IP67

**Compliance with standards and directives**

Standard conformity		
Standards		EN 60947-5-2:2007 IEC 60947-5-2:2007 EN 50295:1999

**Approvals and certificates**

UL approval		cULus Listed, General Purpose
CSA approval		cCSAus Listed, General Purpose
CCC approval		Products with a maximum operating voltage of $\leq$ 36 V do not bear a CCC marking because they do not require approval.

Release date: 2011-07-21 08:34 Date of issue: 2011-07-21 22:6336\_eng.xml

**Programming Instructions**

Adress 00 preset, alterable  
via Busmaster  
or programming units  
IO-Code 0  
ID-Code A  
ID1-Code 7  
ID2-Code E

**Data bit**

Bit	Function
D0	Switching state
D1	-
D2	-
D3	-

**Parameter bit**

Bit	Function
P0	ON / Off delay activated* / deactivated
P1	Switching element function NO* / NC
P2	not used
P3	not used

\*Standard setting

**Programming Instructions**

Adress 00 preset, alterable  
via Busmaster  
or programming units  
IO-Code 0  
ID-Code A  
ID1-Code 7  
ID2-Code E

**Data bit**

Bit	Function
D0	Switching state
D1	-
D2	-
D3	-

**Parameter bit**

Bit	Function
P0	ON / Off delay activated* / deactivated
P1	Switching element function NO* / NC
P2	not used
P3	not used

\*Standard setting

Release date: 2011-07-21 08:34 Date of issue: 2011-07-21 226336\_eng.xml