

# 6x6mm tactile switches

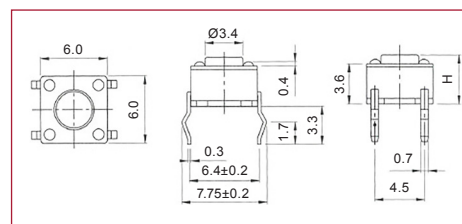
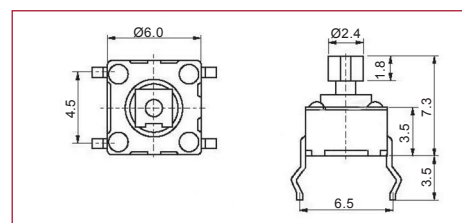
## Product overview

- Advanced switch technology
- Positive tactile action
- Tamper proof application
- Flow solder wash-away cleaning
- Through-hole PCB, surface mount and horizontal terminals
- Square and round button styles
- Other button heights available
- Can be supplied taped for auto-insertion, add suffix /T
- Low operation force available add suffix -LF

SPECIFICATION		
Rating	50mA/12VDC	
Contact resistance	100mΩ max	
Insulation strength	100MΩ min/500VDC	
Electrical life	100,000 operations min	
Temperature range	-10°C to +60°C	
Operating force	180GF ± 50GF	
Material	Case Button Contacts Terminals	Nylon Nylon Stainless steel silver plated Brass silver plated

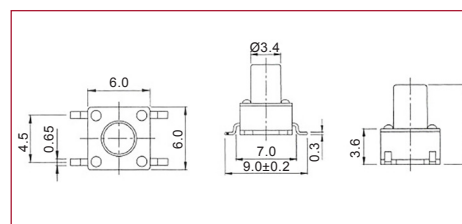
## Through-hole PCB terminals

PART NO.	BUTTON HEIGHT FROM BASE	BUTTON SIZE
CST06S0AT	7.4mm	2.4x2.4mm
CST06S43T	4.3mm	∅3.4mm
CST06S05T	5mm	∅3.4mm
CST06S73T	7.3mm	∅3.4mm
CST06S08T	8mm	∅3.4mm
CST06S95T	9.5mm	∅3.4mm
CST06S13T	13mm	∅3.4mm



## Surface mount terminals

PART NO.	BUTTON HEIGHT FROM BASE
CST06S43S	4.3mm
CST06S05S	5mm
CST06S08S	8mm



## Horizontal PCB terminals

PART NO.	BUTTON HEIGHT FROM BASE
CST06S43H	4.3mm
CST06S05H	5mm
CST06S08H	8mm

