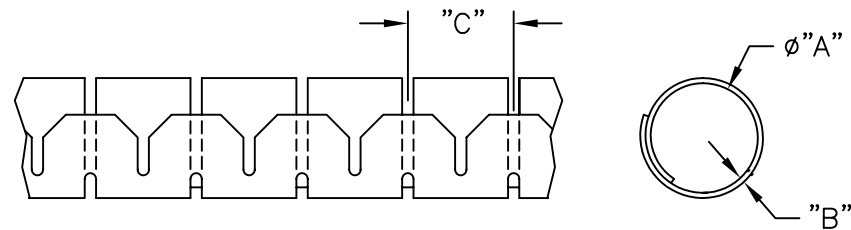


PART NO.	DIA. "A" REF.	MAX. BUNDLE DIA.	WALL "B" REF.	"C" REF.	STANDARD LENGTHS	INSTALLATION TOOL NO.	MATERIAL
SHR-08-6NB	.31 (8)	.39 (10)	.032 (0.8)	.39 (10)	328 ft. (100 m)	CAT-08-PP	NYLON RMS-85
SHR-15-6NB	.59 (15)	.63 (16)	.032 (0.8)	.55 (14)	164 ft. (50 m)	CAT-15-PP	
SHR-20-6NB	.79 (20)	.90 (23)	.035 (0.9)	.67 (17)	98 ft. (30 m)	CAT-20-PP	
SHR-25-6NB	.98 (25)	.98 (25)	.039 (1.0)	.79 (20)	65 ft. (20 m)	CAT-25-PP	
SHR-32-6NB	1.25 (32)	1.25 (32)	.050 (1.3)	.980 (24.9)	49 ft. (15 m)	CAT-32-PP	
SHR-08-PPB	.31 (8)	.39 (10)	.032 (0.8)	.39 (10)	328 ft. (100 m)	CAT-08-PP	POLYPROPYLENE RMS-94
SHR-15-PPB	.59 (15)	.63 (16)	.032 (0.8)	.55 (14)	164 ft. (50 m)	CAT-15-PP	
SHR-20-PPB	.79 (20)	.90 (23)	.035 (0.9)	.67 (17)	98 ft. (30 m)	CAT-20-PP	
SHR-25-PPB	.98 (25)	.98 (25)	.039 (1.0)	.79 (20)	65 ft. (20 m)	CAT-25-PP	
SHR-32-PPB	1.25 (32)	1.25 (32)	.050 (1.3)	.980 (24.9)	49 ft. (15 m)	CAT-32-PP	
SHR-08-6VOB	.31 (8)	.39 (10)	.032 (0.8)	.39 (10)	328 ft. (100 m)	CAT-08-PP	FLAME RETARDANT NYLON UL94 V-0 RMS-95,
SHR-15-6VOB	.59 (15)	.63 (16)	.032 (0.8)	.55 (14)	164 ft. (50 m)	CAT-15-PP	
SHR-20-6VOB	.79 (20)	.90 (23)	.035 (0.9)	.67 (17)	98 ft. (30 m)	CAT-20-PP	
SHR-25-6VOB	.98 (25)	.98 (25)	.039 (1.0)	.79 (20)	65 ft. (20 m)	CAT-25-PP	
SHR-32-6VOB	1.25 (32)	1.25 (32)	.050 (1.3)	.980 (24.9)	49 ft. (15 m)	CAT-32-PP	

1. MATERIAL: HEAT STABILIZED NYLON 6 (RMS-157).
AVAILABLE BY SPECIAL ORDER ONLY.
TO ORDER, USE PART NO. SHR-XX-HTNB
2. STANDARD COLOR: BLACK.
OTHER COLORS AVAILABLE BY SPECIAL ORDER.



M			TITLE: SLIT HARNESS WRAP			DWG IN		FINAL	
SEE ECN #877 FOR CHANGES	SM 11.04.04		TOLERANCES UNLESS NOTED	FILE # SHR	DWN: J.B.	APP:	IN(mm)		
SEE ECN #876 FOR CHANGES	SM 11.03.04		.XX=±.020	MAT'L: SEE NOTES	DT: 01-05-97	DT:			
SEE ECN #857 FOR CHANGES	SM 09.27.04		.XXX=±.015	RE: RICHCO INC	RICHCO INC.		PART #		PRINT
SEE ECN #825 FOR CHANGES	SM 07.14.04		FRAC=1/64		PO BOX 804238, CHICAGO, 60680		SEE CHART		TYPE
SEE ECN #619 FOR CHANGES	SM 05.01.03		ANG=1°		(773) 539-4060				CA
SEE ENGINEERING FOR REV A-H	-								
DESCRIPTION	ENGR	DATE							