

EAO – Your Expert Partner for Human Machine Interfaces

82-6551.1000 - Pushbutton 22 mm Aluminium

82-6551.1000 - Pushbutton 22 mm Aluminium



Attention: The preview is based on a sample product. This can differ from your current configuration.

Mounting

Design	flush
Mounting cut-out	Ø 22,3 mm

Front

Front shape	round
Front ring shape	flush
Front dimension	Ø 25 mm
Front bezel material	Aluminium

Other Attributes

Weight	0,018 kg
--------	----------

Operating-/Indication part

Lens optics	opaque
Lens material	Aluminium
Lens colour	natural anodized
Lens profile	flat
Lens illumination	non-illuminative

IP-Rating

Front protection	IP65, IP67
------------------	------------

Connection Method

Terminal	Solder 2.8 x 0.5 mm
----------	---------------------

Actuator

Switching action	Momentary
------------------	-----------

Switching element

Switching current	3 A
Contact material	Silver
Contacts	1 C
Switching system	Snap-action switching element
Switching voltage	240 V AC/DC

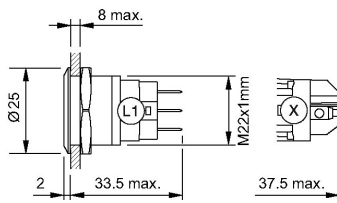
Function

Pushbutton

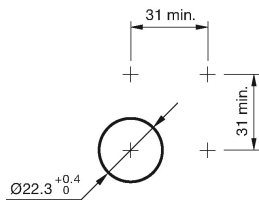
EAO – Your Expert Partner for Human Machine Interfaces

82-6551.1000 - Pushbutton 22 mm Aluminium

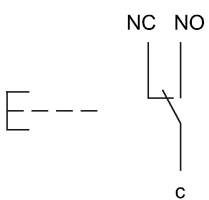
Dimensions



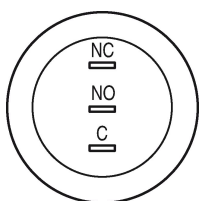
Mounting cut-outs



Wiring diagram



Component layout



Legend

Switching action: B = Momentary
Contacts: C = Changeover