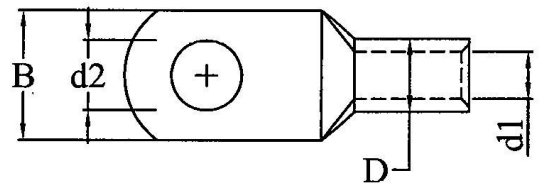
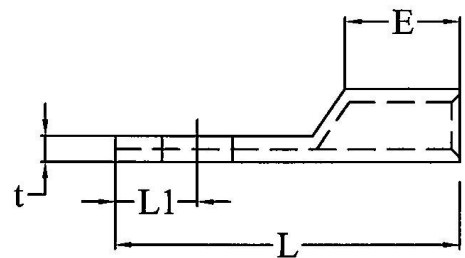


Tubular Ring Terminal



Features

- Terminal with tubular body for crimping, with ring-shaped end
- Made of copper
- Non-insulated
- Closed barrel ensures crimp terminal fits securely around the cable
- Applications include cabling and wiring in industrial control systems and industrial machines, automotive applications, communication equipment, power supplies and domestic appliances



Product Range:

Article Nr.	AWG	D	d1	d2	B	E	L	L1	t	Stud Size
RND 465-01064	22-16 AWG	4 ±0.3	2.2±0.3	5.3±0.6	8 ±1.0	5 ±0.8	17 ±1.2	4.5±0.8	1.0±0.5	#10
RND 465-01065	16-14 AWG	4.5±0.3	2.9±0.3	4.3±0.6	8 ±1.0	7 ±0.8	19 ±1.2	4.5±0.8	1.0±0.5	#8
RND 465-01066	16-14 AWG	4.5±0.3	2.9±0.3	5.3±0.6	8 ±1.0	7 ±0.8	21 ±1.5	5 ±1.0	1.0±0.5	#10
RND 465-01067	16-14 AWG	4.5±0.3	2.9±0.3	6.4±0.6	8 ±1.0	7 ±0.8	21 ±1.5	5 ±1.0	1.0±0.5	1/4
RND 465-01068	14-12 AWG	5.2±0.3	3.6±0.3	4.3±0.6	10 ±1.0	7 ±0.8	21 ±1.5	5 ±1.0	1.0±0.5	#8
RND 465-01069	14-12 AWG	5.2±0.3	3.6±0.3	5.3±0.6	10 ±1.0	7 ±0.8	21 ±1.5	5 ±1.0	1.0±0.5	#10
RND 465-01070	14-12 AWG	5.2±0.3	3.6±0.3	6.4±0.6	10 ±1.0	7 ±0.8	21 ±1.5	5 ±1.0	1.0±0.5	1/4
RND 465-01071	12-10 AWG	6 ±0.3	4.2±0.3	4.3±0.6	10 ±1.0	9 ±1.0	23.5±2.0	5 ±1.2	1.2	#8
RND 465-01072	12-10 AWG	6 ±0.3	4.2±0.3	5.3±0.6	10 ±1.0	9 ±1.0	23.5±2.0	5 ±1.2	1.2	#10
RND 465-01073	12-10 AWG	6 ±0.3	4.2±0.3	6.4±0.6	10 ±1.0	9 ±1.0	26 ±2.0	6.5±1.2	1.	1/4
RND 465-01074	8 AWG	7 ±0.3	5 ±0.3	6.4±0.6	12.4±1.0	9 ±1.0	27.5±2.0	6.8±1.5		1/4
RND 465-01075	8 AWG	7 ±0.3	5 ±0.3	8.4±0.6	12.4±1.0	9 ±1.0	27.5±2.0	7 ±1.5		5/16
RND 465-01076	6 AWG	7.8±0.3	5.8±0.3	6.4±0.8	12.4±1.2	12.0±1.2	31 ±2.5	7 ±1.5		1/4
RND 465-01077	6 AWG	7.8±0.3	5.8±0.3	8.4±0.8	12.4±1.2	12.0±1.2	31 ±2.5	7 ±1.5		5/16
RND 465-01078	6 AWG	7.8±0.3	5.8±0.3	10.5±0.8	16.0±1.2	12.0±1.2	34 ±2.5	8 ±1.5		3/8
RND 465-01079	4 AWG	9.5±0.3	7.5±0.3	8.4±0.8	15.5±1.2	12.0±1.2	34 ±2.5	8.5±1.5		5/16
RND 465-01080	4 AWG	9.5±0.3	7.5±0.3	10.5±0.8	17.5±1.2	12.0±1.2	37 ±2.5	10 ±1.5		3/8
RND 465-01081	2 AWG	11.4±0.2	8.6±0.2	8.4±0.6	16.5±0.9	15.0±1.2	38 ±2.5	9 ±1.5		5/16
RND 465-01082	2 AWG	11.4±0.2	8.6±0.2	10.5±0.6	17.5±0.9	15.0±1.2	40.5±2.5	10 ±1.5		3/8
RND 465-01083	1/0 AWG	12.6±0.3	9.6±0.3	8.4±0.6	18.0±0.9	15.0±1.2	43.5±2.5	10 ±1.5		5/16
RND 465-01084	1/0 AWG	12.6±0.3	9.6±0.3	10.5±0.6	18.0±0.9	15.0±1.2	43.5±2.5	10.5±1.5		3/8

Unit: mm