

Rittal – The System.

Faster – better – everywhere.

► Small enclosures KX Terminal box KX, sheet steel, without gland plate – KX 1501.000

Date : Nov 10, 2021

ENCLOSURES

POWER DISTRIBUTION

CLIMATE CONTROL

IT INFRASTRUCTURE

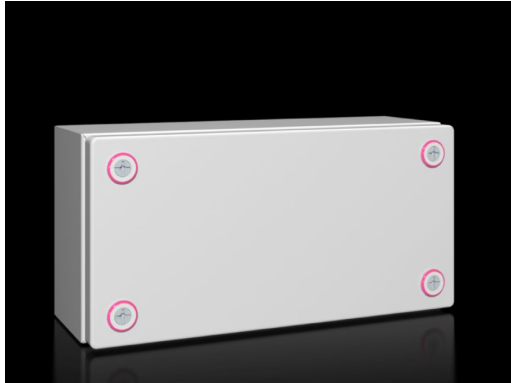
SOFTWARE & SERVICES

FRIEDHELM LOH GROUP



Small enclosures KX Terminal box KX, sheet steel, without gland plate – KX 1501.000

created: 10.11.2021 on www.rittal.com/com-en



Product description

Description:	The small enclosure KX, terminal box KX, without a gland plate allows for flexible interior installation while maintaining a high protection category.
Material:	Enclosure: Sheet steel Cover: Sheet steel, all-round foamed-in PU seal
Surface finish:	Enclosure and cover: Dipcoat primed, powder-coated on the outside, textured paint
Colour:	RAL 7035
Protection category IP to IEC 60 529:	IP 66
Protection category NEMA:	NEMA 1, 3R, 4, 12
Type rating to UL 50E:	Type 1, 3R, 4, 12
IK Code:	IK08
Supply includes:	Enclosure with cover Mini cam lock
Basic material:	Sheet steel

Product description

Dimensions:	Width: 300 mm Height: 150 mm
--------------------	---------------------------------

Depth: 120 mm

Material thickness:	Enclosure: 1.25 mm Cover: 1.25 mm
No. of mini cam locks:	4
Packs of:	1 pc(s).
Weight/pack:	2.32 kg
EAN:	4028177816152
Customs tariff number:	73269098
ETIM 7.0:	EC000261
ETIM 6.0:	EC000261
eCl@ss 8.0/8.1:	27180101
eCl@ss 6.0/6.1:	27180101
Product description:	KX Terminal box, WHD: 300x150x120 mm, sheet steel, without mounting plate, with cover, without gland plate

Approvals

Approvals:	Bureau Veritas DNV-GL Lloyds Register of Shipping UL + C-UL
Certificates:	Certificate of manufacturer according to RMRS Protection category
Declarations:	Declaration of conformity