

MATERIALS AND FINISHES:

SMA JACK STR CONNECTOR:

BODY, CRIMP TUBE, JAM NUT: BRASS
PLATED GOLD

CENTER CONTACT: BERYLLIUM COPPER
PLATED GOLD

INSULATOR: TEFLON

LOCK WASHER: PHOSPHOR BRONZE
PLATED GOLD

CONNECTOR:

MHF® I LK

CABLE: 1.32MM CABLE BLACK

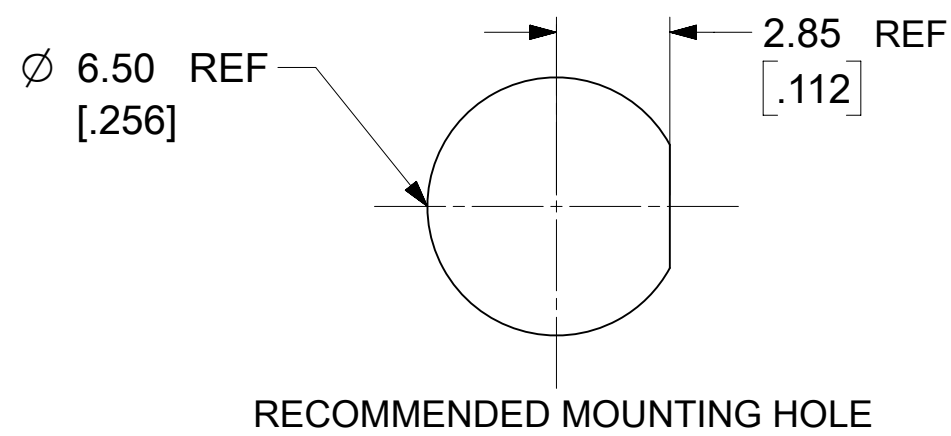
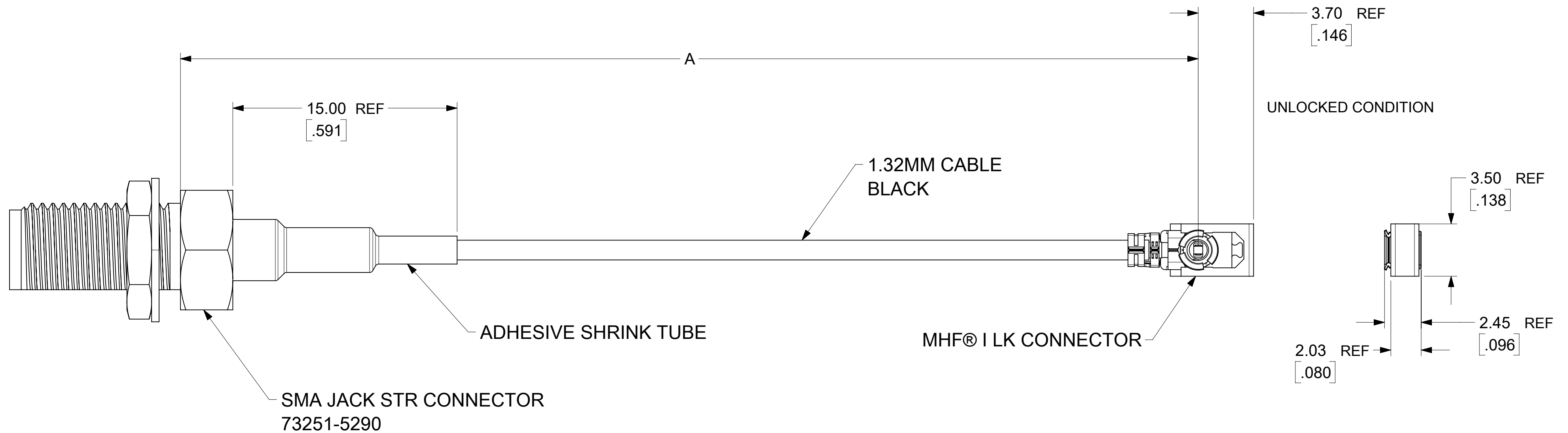
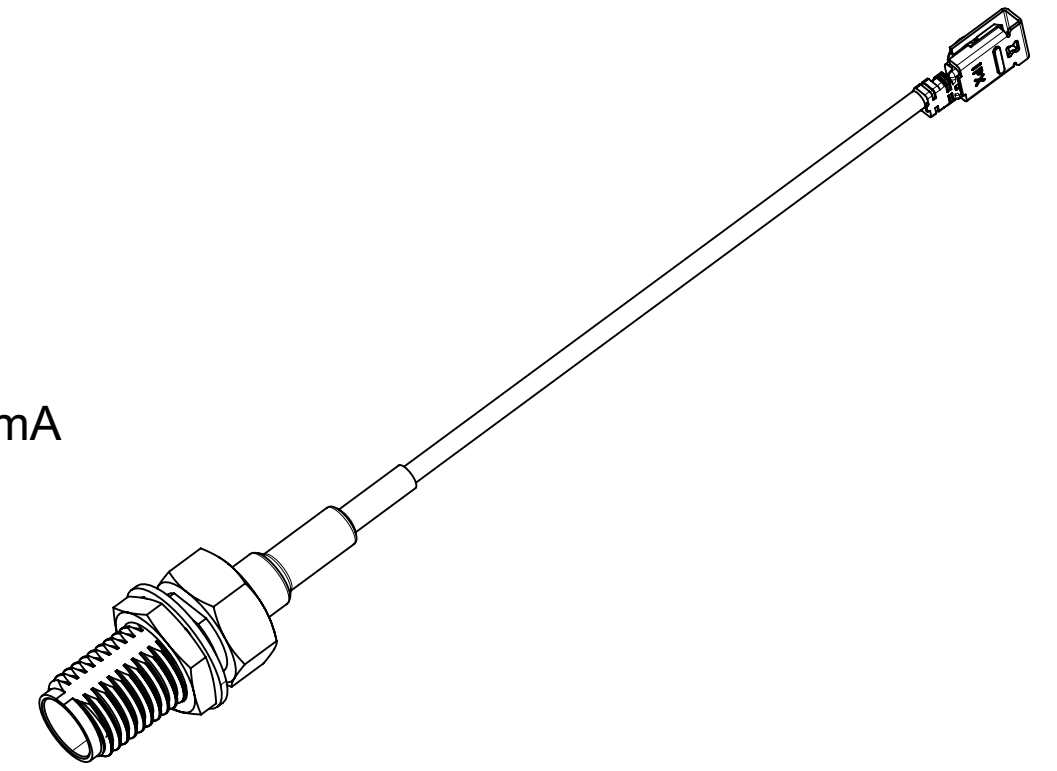
MATED HEIGHT: 2.90MM MAX

NOTES:

PACKAGING BY PLASTIC BAG

PERFORMANCE REQUIREMENTS:

1. FREQUENCY: DC~ 6GHz
2. IMPEDANCE: 50 OHMS
3. TEST 100% CONTINUITY
4. TEST 100% HI-POT: AC 350 V@0.5mA



73230-6115	2.000±.118	50.80±3.00
73230-6114	4.000±.197	101.60±5.00
73230-6113	6.000±.197	152.40±5.00
73230-6112	8.000±.197	203.20±5.00
73230-6111	10.000±.197	254.00±5.00
73230-6110	12.008±.197	305.00±5.00
PART No.	IN	MM
	A	

FUNCTIONAL SYMBOLS	THIS DRAWING CONTAINS INFORMATION THAT IS PROPRIETARY TO MOLEX ELECTRONIC TECHNOLOGIES, LLC AND SHOULD NOT BE USED WITHOUT WRITTEN PERMISSION		
DIMENSION UNITS	SCALE	CURRENT REV DESC:	
$\frac{F}{A} = 0$	mm	NTS	ADD NEW PART No: 732306111, 732306112, 732306113, 732306114, 732306115
$\frac{F}{E} = 0$	GENERAL TOLERANCES (UNLESS SPECIFIED)		
$\frac{F}{P} = 0$	ANGULAR TOL	±	°
DIVISIONAL SYMBOLS	4 PLACES	±	
	3 PLACES	±	
	2 PLACES	±	
	1 PLACE	±	
0 PLACES	±		
DRAFT WHERE APPLICABLE MUST REMAIN WITHIN DIMENSIONS		THIRD ANGLE PROJECTION	DRAWING SERIES
			C-SIZE 73230
DOCUMENT NUMBER		DOC TYPE	DOC PART
732306110		PSD	000
CUSTOMER		SHEET NUMBER	
GENERAL MARKET		1 OF 1	