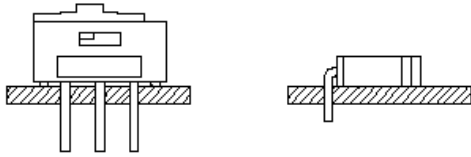


Order code	Manufacturer code	Description
76-0114	600A-611-M2-R	LOW POWER SLIDE SWITCH SPDT (RC)

	Page 1 of 3
The enclosed information is believed to be correct, Information may change 'without notice' due to product improvement. Users should ensure that the product is suitable for their use. E. & O. E.	Revision A 04/07/2003



SPECIFICATIONS:

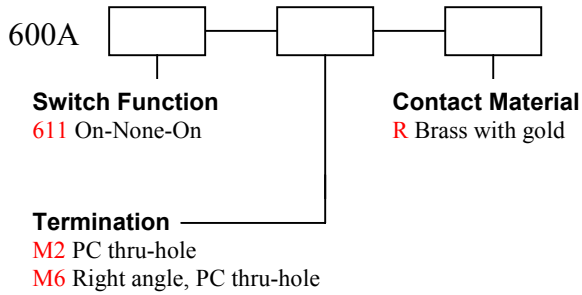
CONTACT RATING: DC 12V 0.5A.
 CONTACT RESISTANCE: 30mΩ max.
 MECHANICAL LIFE: 1,000 cycles.
 INSULATION RESISTANCE: 500MΩ Min. at 500VDC.

MATERIALS:

HOUSING: Nylon 6/6 (UL94V-0).
 SLIDE HANDLE: Nylon 6/6 (UL94V-0).

If your preferred product configuration is not shown, please contact our sales representative for custom design.

HOW TO ORDER SYSTEM



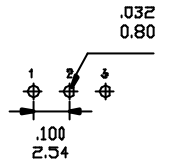
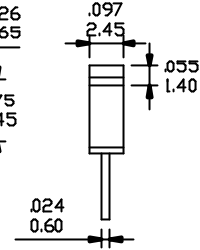
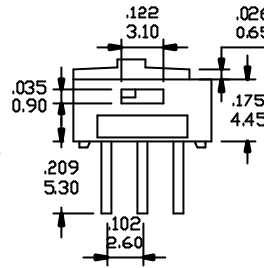
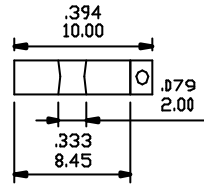
Series 600A

Low Power Slide Switches

M2

P.C.MOUNTING

Model No.	Switching Position		
	611	ON	NONE
	2-1	OPEN	2-3

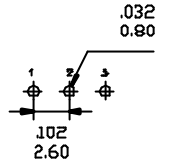
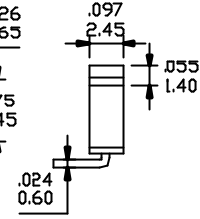
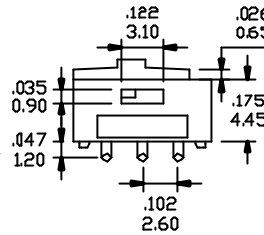
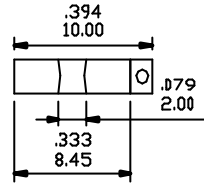


SPDT

M6

P.C.MOUNTING

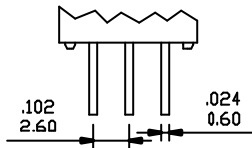
Model No.	Switching Position		
	611	ON	NONE
	2-1	OPEN	2-3



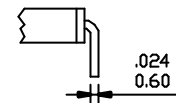
SPDT

TERMINATIONS

M2



M6



CONTACT MATERIAL OPTIONS

Coding	Contact & Terminal Material	Rating	Agency Approvals
R	Brass with gold plating	0.5A @ 12VDC	