








SURGE SUPPRESSOR, DIODE COMBINATION, DC 24 V, FOR MOTOR CONTACTORS SZ S0,

General technical data:		
product brand name		SIRIUS
Product designation		surge suppressor
Size of contactor		S0
Design of the surge suppressor		with diode assemblies
Ambient temperature		
• during storage	°C	-40 ... +80
• during operation	°C	-25 ... +60
Control circuit/ Control:		
Type of voltage of the control supply voltage		DC
Control supply voltage 1		
• for DC		
— Rated value	V	24
Installation/ mounting/ dimensions:		
mounting position		any
Mounting type		clip-on
Width	mm	30
Height	mm	19
Depth	mm	12
Certificates/ approvals:		
Certificate of suitability		CE / UL / CSA / CCC

General Product Approval	Declaration of Conformity	Test Certificates	Shipping Approval
		 EG-Konf.	Special Test Certificate  ABS  BUREAU VERITAS

Shipping Approval					
 DNV	 GL	 LRS	 PRS	 RINA	 RMRS

other		
Confirmation	Environmental Confirmations	 VDE

Further information

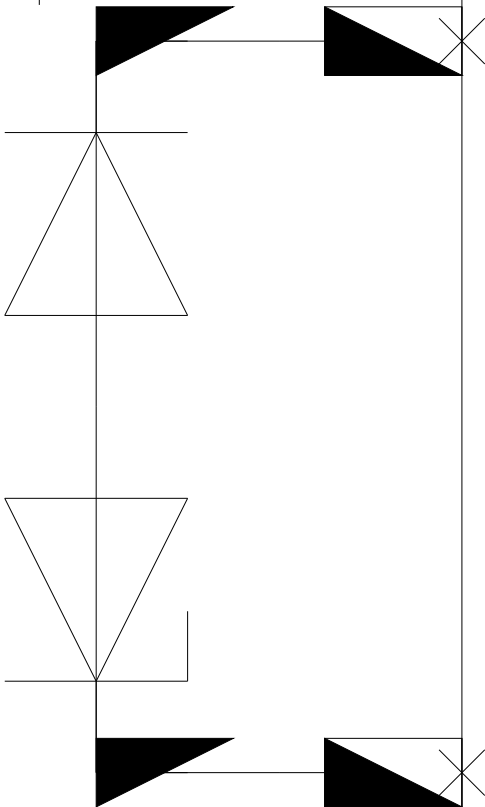
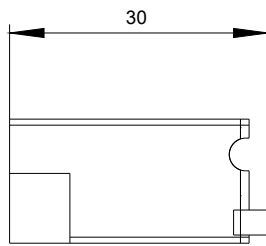
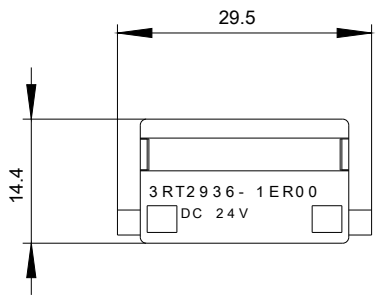
Information- and Downloadcenter (Catalogs, Brochures,...)
<http://www.siemens.com/industrial-controls/catalogs>

Industry Mall (Online ordering system)
<http://www.siemens.com/industrymall>

Cax online generator
<http://support.automation.siemens.com/WW/CAXorder/default.aspx?lang=en&mlfb=3RT29261ER00>

Service&Support (Manuals, Certificates, Characteristics, FAQs,...)
<http://support.automation.siemens.com/WW/view/en/3RT29261ER00/all>

Image database (product images, 2D dimension drawings, 3D models, device circuit diagrams, EPLAN macros, ...)
<http://www.automation.siemens.com/bilddb/index.aspx?attID9=3RT29261ER00&lang=en>



last modified:

09.03.2015