

## TNMA indexable insert, negative

**ATORN®**

### Application

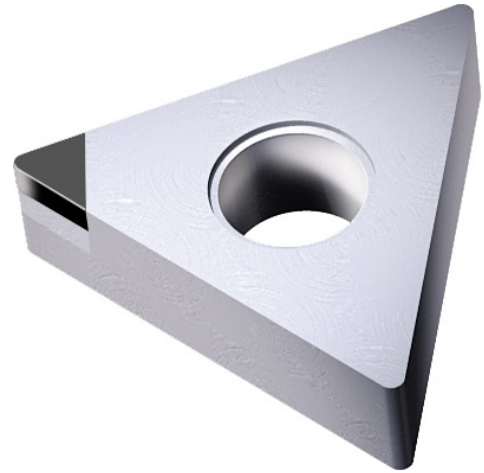
For longitudinal turning and copy turning under challenging operating conditions with small feed depths for material groups of cast iron, (special alloys).

### Version

- ground CBN indexable insert

### Advantage

- excellent resistance to wear, optimised for machining using interrupted cutting



<b>Art. no.</b>	<b>17871 619</b>
<b>Shape of indexable insert ISO</b>	T
<b>Clearance angle of indexable insert ISO</b>	N
<b>Tolerance class of indexable insert ISO</b>	G
<b>Indexable insert type ISO</b>	A
<b>Size of indexable insert ISO</b>	16
<b>Thickness of indexable insert ISO</b>	04
<b>Corner radius of indexable insert ISO</b>	12
<b>ISO name</b>	TNGA 160412
<b>Cutting material</b>	CBN
<b>Type of cutting material</b>	ABC10/F
<b>ISO-Code Rotating</b>	TNGA 160412
<b>Machining conditions for indexable insert</b>	Good, Unfavourable
<b>Design of the chamfer</b>	F (chamfered)
<b>Materials group</b>	K (primary application), S (secondary application)

### EAN-Code

4050293397734