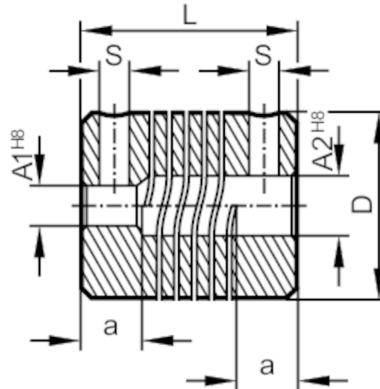


# E60027



## Flexible coupling for encoders

COUPLING 25-6-8-24-SV



### Mechanical data

|                                     |      |           |
|-------------------------------------|------|-----------|
| Weight                              | [g]  | 27.4      |
| Materials                           |      | aluminium |
| External diameter D                 | [mm] | 25        |
| Inside diameter A1                  | [mm] | 6         |
| Inside diameter A2                  | [mm] | 8         |
| Length L                            | [mm] | 24        |
| Depth of the clamping hub           | [mm] | 7         |
| Clamp screw                         | [mm] | M4        |
| Max. revolution, mechanical [U/min] |      | 8000      |
| Max. axial shaft misalignment [mm]  |      | ± 0,5     |
| Max. radial shaft misalignment [mm] |      | ± 0,3     |
| Max. angular displacement [°]       |      | ± 4,0     |

### Remarks

|               |                                                                                                                                                                                                                                                       |
|---------------|-------------------------------------------------------------------------------------------------------------------------------------------------------------------------------------------------------------------------------------------------------|
| Remarks       | The data indicated apply to couplings with the above hub borings at an ambient temperature of 23 °C.<br>The values of radial, angular and axial displacement are maximum values which must not reach their maximum simultaneously while in operation. |
| Pack quantity | 1 pcs.                                                                                                                                                                                                                                                |