

GN 188 | Toothed clamping elements

Stainless steel



MATERIAL

AISI CF-8 stainless steel.

THRUST SPRING

AISI 301 stainless steel.

THREADED BUSHING

AISI 304 stainless steel.

MOUNTING

Welding.

STANDARD EXECUTIONS

- **GN 188-A-NI**: pass-through hole, without bushing.
- **GN 188-B-NI**: bushing with threaded pass-through hole.
- **GN 188-C-NI**: bushing with threaded pass-through hole and centering step.

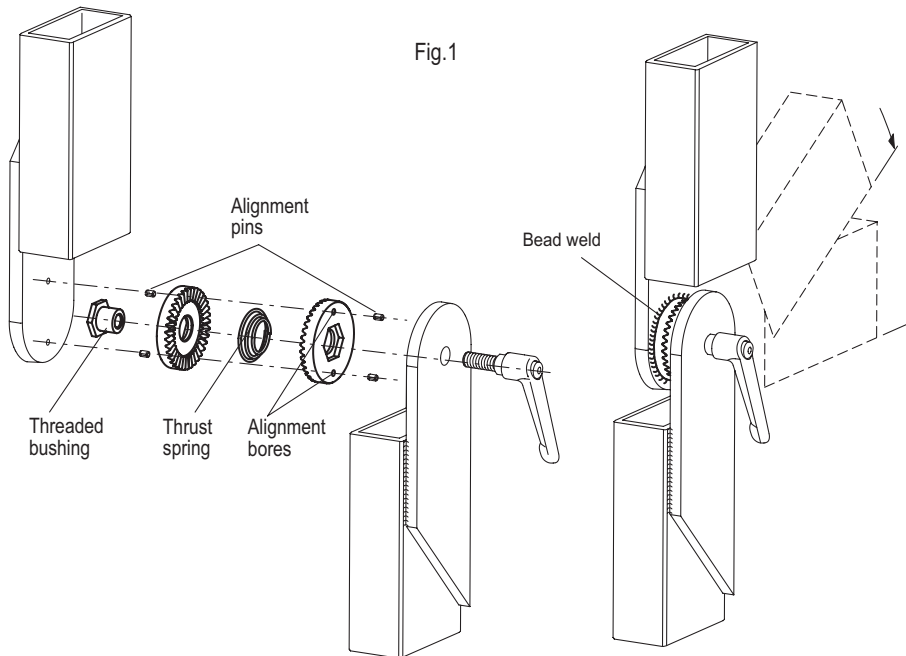
FEATURES AND APPLICATIONS

GN 188 toothed elements are used to assemble coupled parts at a given angle, on which they are fixed by welding (Fig. 1).

The tothing is oriented so as to guarantee the perfect alignment both at 0 ° and at 90 ° angle.

During assembly, the thrust spring is positioned between the two toothed elements, ensuring the proper separation during loosening.

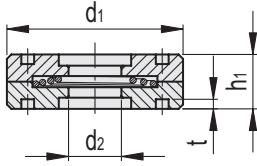
The supply includes two toothed elements, a thrust spring and, depending on the version, a threaded bushing.



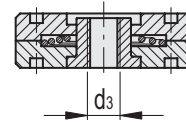
Machine elements

- 1
- 2
- 3
- 4
- 5
- 6
- 7
- 8
- 9
- 10
- 11
- 12
- 13
- 14
- 15
- 16
- 17
- 18

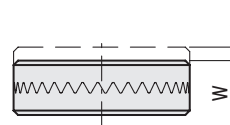
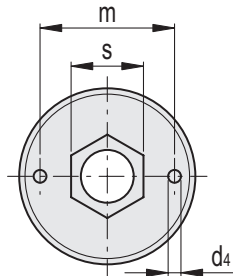
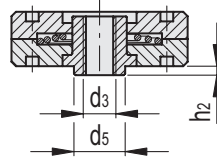
GN 188-A-NI



GN 188-B-NI



GN 188-C-NI



INOX STAINLESS STEEL

GN 188-A-NI

Code	Description	d1	d2	d4	h1	m	s	t	Teeth no. z	wmin	
GN.31512	GN 188-35-24-A-NI	35	12	3	12	26	17	2.5	24	2	7
GN.31517	GN 188-35-36-A-NI	35	12	3	12	26	17	2.5	36	2	7
GN.31522	GN 188-55-24-A-NI	55	16	4	17	42	22	3	24	3	18
GN.31527	GN 188-55-36-A-NI	55	16	4	17	42	22	3	36	3	18
GN.31537	GN 188-75-24-A-NI	75	20	5	22	60	27	4	24	4	46
GN.31547	GN 188-75-36-A-NI	75	20	5	22	60	27	4	36	4	46

INOX STAINLESS STEEL

GN 188-B-NI

Code	Description	d1	d3	d4	h1	m	s	t	Teeth no. z	wmin	
GN.31513	GN 188-35-24-B-NI	35	M8	3	12	26	17	2.5	24	2	10
GN.31518	GN 188-35-36-B-NI	35	M8	3	12	26	17	2.5	36	2	10
GN.31523	GN 188-55-24-B-NI	55	M10	4	17	42	22	3	24	3	26
GN.31528	GN 188-55-36-B-NI	55	M10	4	17	42	22	3	36	3	26
GN.31538	GN 188-75-24-B-NI	75	M12	5	22	60	27	4	24	4	54
GN.31548	GN 188-75-36-B-NI	75	M12	5	22	60	27	4	36	4	54

INOX STAINLESS STEEL

GN 188-C-NI

Code	Description	d1	d3	d4	d5-0.15	h1	h2	m	s	t	Teeth no. z	wmin	
GN.31514	GN 188-35-24-C-NI	35	M8	3	12	12	1.7	26	17	2.5	24	2	11
GN.31519	GN 188-35-36-C-NI	35	M8	3	12	12	1.7	26	17	2.5	36	2	11
GN.31524	GN 188-55-24-C-NI	55	M10	4	16	17	2.8	42	22	3	24	3	30
GN.31529	GN 188-55-36-C-NI	55	M10	4	16	17	2.8	42	22	3	36	3	30
GN.31539	GN 188-75-24-C-NI	75	M12	5	20	22	4.7	60	27	4	24	4	62
GN.31549	GN 188-75-36-C-NI	75	M12	5	20	22	4.7	60	27	4	36	4	62

Machine elements