

- 1
- 2
- 3
- 4
- 5
- 6
- 7
- 8
- 9
- 10
- 11
- 12
- 13
- 14
- 15
- 16
- 17
- 18

MATERIAL

Zinc-plated steel, class 5.8 (tensile strength 500 N/mm²).

MAGNET

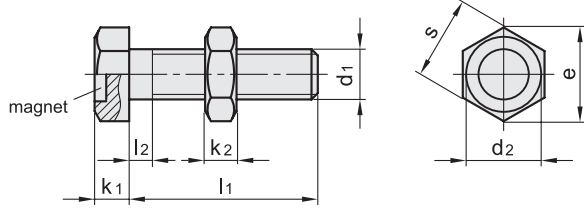
(NdFeB) Neodymium- iron-boron, for temperatures up to 80°C.
See Guidelines for the choosing (on page 1052).

LOCKING NUT

Zinc-plated steel, class 04 (tensile strength 400 N/mm²).

FEATURES AND APPLICATIONS

GN 251.6 grub screws with retaining magnet are shielded magnetic systems with high performances. They are generally used for fixation of parts to be machined. The locking nut can be used for a safe fixing of the screw after positioning.



Code	Description	d1	d2	l1	k1-1	k2	l2 max	e	s	Nominal adhesive forces* [N]	⚖️
GN.34225	GN 251.6-M6-12-ND	M6	10	12	4	3.2	3	11	10	25	5
GN.34226	GN 251.6-M6-16-ND	M6	10	16	4	3.2	3	11	10	25	6
GN.34227	GN 251.6-M6-20-ND	M6	10	20	4	3.2	3	11	10	25	7
GN.34228	GN 251.6-M6-25-ND	M6	10	25	4	3.2	3	11	10	25	8
GN.34229	GN 251.6-M6-30-ND	M6	10	30	4	3.2	3	11	10	25	9
GN.34230	GN 251.6-M8-16-ND	M8	13	16	5.3	4	3.7	14.4	13	50	13
GN.34231	GN 251.6-M8-20-ND	M8	13	20	5.3	4	3.7	14.4	13	50	14
GN.34232	GN 251.6-M8-25-ND	M8	13	25	5.3	4	3.7	14.4	13	50	16
GN.34233	GN 251.6-M8-30-ND	M8	13	30	5.3	4	3.7	14.4	13	50	17
GN.34234	GN 251.6-M8-40-ND	M8	13	40	5.3	4	3.7	14.4	13	50	21
GN.34235	GN 251.6-M10-20-ND	M10	17	20	6.4	5	4.5	17.8	17	75	26
GN.34236	GN 251.6-M10-25-ND	M10	17	25	6.4	5	4.5	17.8	17	75	30
GN.34237	GN 251.6-M10-30-ND	M10	17	30	6.4	5	4.5	17.8	17	75	37
GN.34238	GN 251.6-M10-40-ND	M10	17	40	6.4	5	4.5	17.8	17	75	39
GN.34239	GN 251.6-M10-50-ND	M10	17	50	6.4	5	4.5	17.8	17	75	42
GN.34240	GN 251.6-M12-25-ND	M12	19	25	7.5	6	5.2	20	19	110	44
GN.34241	GN 251.6-M12-30-ND	M12	19	30	7.5	6	5.2	20	19	110	48
GN.34242	GN 251.6-M12-40-ND	M12	19	40	7.5	6	5.2	20	19	110	55
GN.34243	GN 251.6-M12-50-ND	M12	19	50	7.5	6	5.2	20	19	110	62
GN.34244	GN 251.6-M12-60-ND	M12	19	60	7.5	6	5.2	20	19	110	84
GN.34245	GN 251.6-M16-30-ND	M16	24	30	10	8	6	26.8	24	145	93
GN.34246	GN 251.6-M16-40-ND	M16	24	40	10	8	6	26.8	24	145	104
GN.34247	GN 251.6-M16-50-ND	M16	24	50	10	8	6	26.8	24	145	118
GN.34248	GN 251.6-M16-60-ND	M16	24	60	10	8	6	26.8	24	145	131
GN.34249	GN 251.6-M16-80-ND	M16	24	80	10	8	6	26.8	24	145	157

Industrial magnets