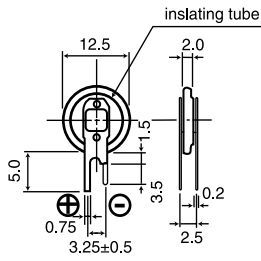


## VL1220

### ■ Dimensions(mm)

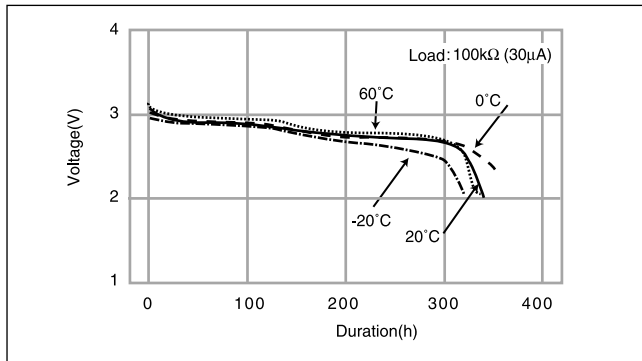
(VL1220 / 1F5U)



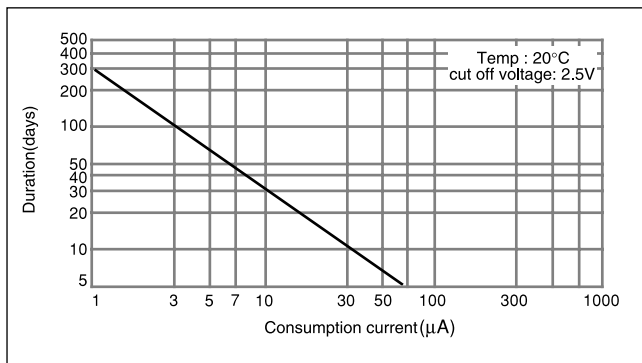
### ■ Specification

<b>Nominal voltage(V)</b>	3
<b>Nominal capacity(mAh)</b>	7.0
<b>Continuous standard load(mA)</b>	0.03
<b>Operating temperature(°C)</b>	-20 ~ +60

### ■ Discharge Temperature Characteristics



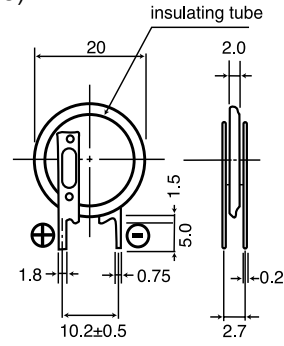
### ■ Consumption current vs. Duration time



## VL2020

### ■ Dimensions(mm)

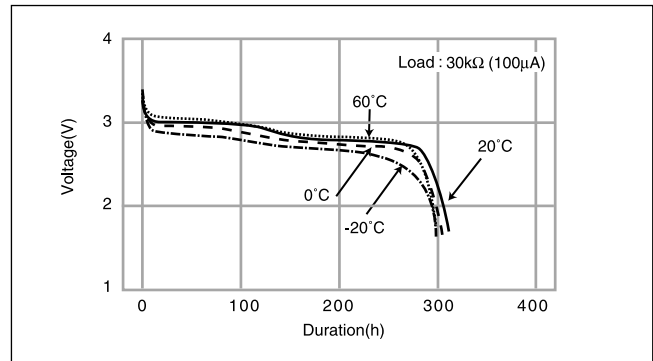
(VL2020 / 1VC)



### ■ Specification

<b>Nominal voltage(V)</b>	3
<b>Nominal capacity(mAh)</b>	20.0
<b>Continuous standard load(mA)</b>	0.07
<b>Operating temperature(°C)</b>	-20 ~ +60

### ■ Discharge Temperature Characteristics



### ■ Consumption current vs. Duration time

