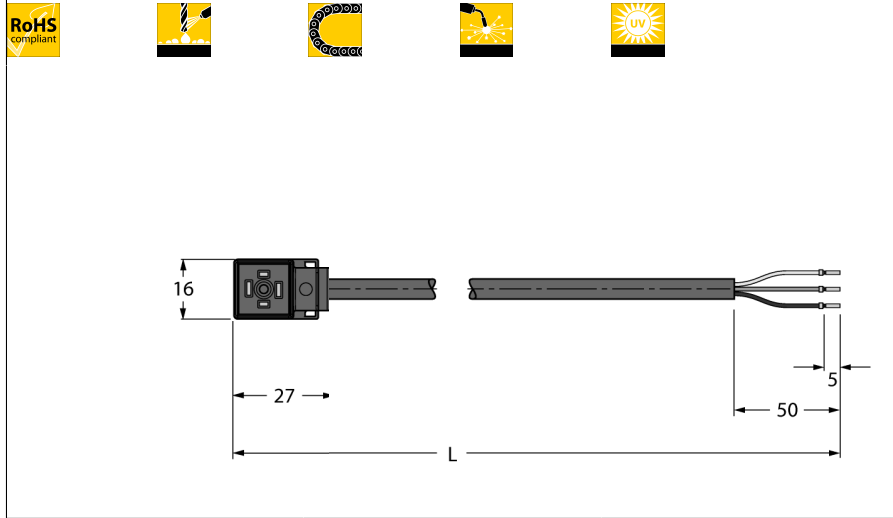


**Valve connector, C**  
**Connection Cable**  
**VC8S22-T80E-2/TXL**

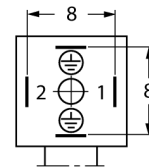


- 2-pin + PE, bridged
- Design according to the DIN EN 175301-803
- RoHS conform
- Protection class: IP67 and IP69K
- Protective component: Z diode
- Sheath material: PUR
- Sheath color: black
- Qualified for drag chain use
- Resistant to weld splatter
- Resistant to chemicals and oils
- UV and ozone resistance
- Flame retardant
- Free from halogen, silicone, PVC and LABS
- Cable length: 2.0 m

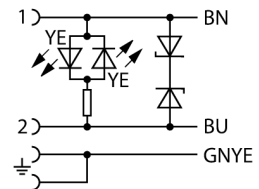
|                         |                   |
|-------------------------|-------------------|
| <b>Type designation</b> | VC8S22-T80E-2/TXL |
| Ident no.               | 6606529           |

|                         |                                 |
|-------------------------|---------------------------------|
| <b>Connector A side</b> | Valve connector, Design C       |
| Number of pins          | 2+PE, PE bridged                |
| Contacts                | Metal, CuSn, Silver-plated      |
| Contact carriers        | Plastic, PA, Black              |
| Grip                    | Plastic, TPU, Black/Translucent |
| Protective component    | Z diode                         |
| Seal                    | Plastic, TPU                    |
| Protection class        | IP67, IP69K, (mounted)          |
| Display switch state    | LED yellow/yellow               |
| Mechanical lifespan     | > 100 Mating cycles             |
| Pollution degree        | 3                               |

**Pin Assignment**



**Circuit Diagram**



|                        |                       |
|------------------------|-----------------------|
| <b>General data</b>    |                       |
| Cable diameter         | 5.7 ± 0.20mm          |
| Cable length           | 2 m                   |
| Cable quality          | PUR                   |
| Cable color            | Black                 |
| Core insulation        | PP                    |
| Core colors            | BN, BU, GNYE          |
| Core cross-section     | 3x0.75mm <sup>2</sup> |
| Arrangement of strands | 42x0.15 mm            |

|                                      |              |
|--------------------------------------|--------------|
| <b>Electrical features at +20 °C</b> |              |
| Current                              | 4 A          |
| Rated voltage                        | 24 V         |
| Insulation resistance                | > 1 MΩ/km    |
| Test voltage                         | 2000 V       |
| Forward resistance                   | max. 26 Ω/km |

|   |                              |
|---|------------------------------|
| <b>Mechanical and chemical properties</b> |                              |
| Max. tensile strength (static)            | ≤ 50 N/mm <sup>2</sup>       |
| Max. tensile strength (dynamic)           | ≤ 20 N/mm <sup>2</sup>       |
| Bending cycles                            | > 5 mil.                     |
| Bending radius (stationary laying)        | > 5 x Ø                      |
| Bending radius (flexible use)             | > 10 x Ø                     |
| Admissible acceleration                   | max. 5 m/s <sup>2</sup>      |
| Admissible travel path, horizontal        | 5 m (at 5 m/s <sup>2</sup> ) |
| Admissible travel path, vertical          | 2 m (at 5 m/s <sup>2</sup> ) |
| Admissible traversing speed               | 3.3 m/s                      |
| Torsional stress                          | ± 180 °/m                    |
| Ambient temperature                       |                              |
| Stationary                                | -50...+80 °C                 |
| In motion                                 | -30...+90 °C                 |
| Drag chain operation                      | -25...+60 °C                 |