

MAX17554B Evaluation Kit

Evaluates: **MAX17554(MAX17554B)**

General Description

The MAX17554B evaluation kit (EV kit) is a fully assembled and tested circuit board that shows the performance of the MAX17554B, 10V to 60V, 50mA, ultra-small, high efficiency, synchronous step-down DC-DC converter in an 8-pin TDFN (2mm x 2mm) package. The EV kit is designed to operate over a 10V to 60V input and provides a 5V, 50mA output. The MAX17554B turns on at 42.5V (max) and turns off at 10V (max) input voltage. The step-down converter works at a fixed 70kHz switching frequency and delivers a high light load efficiency of 78.3% with supplied components at 48V IN, 5V 10mA OUT.

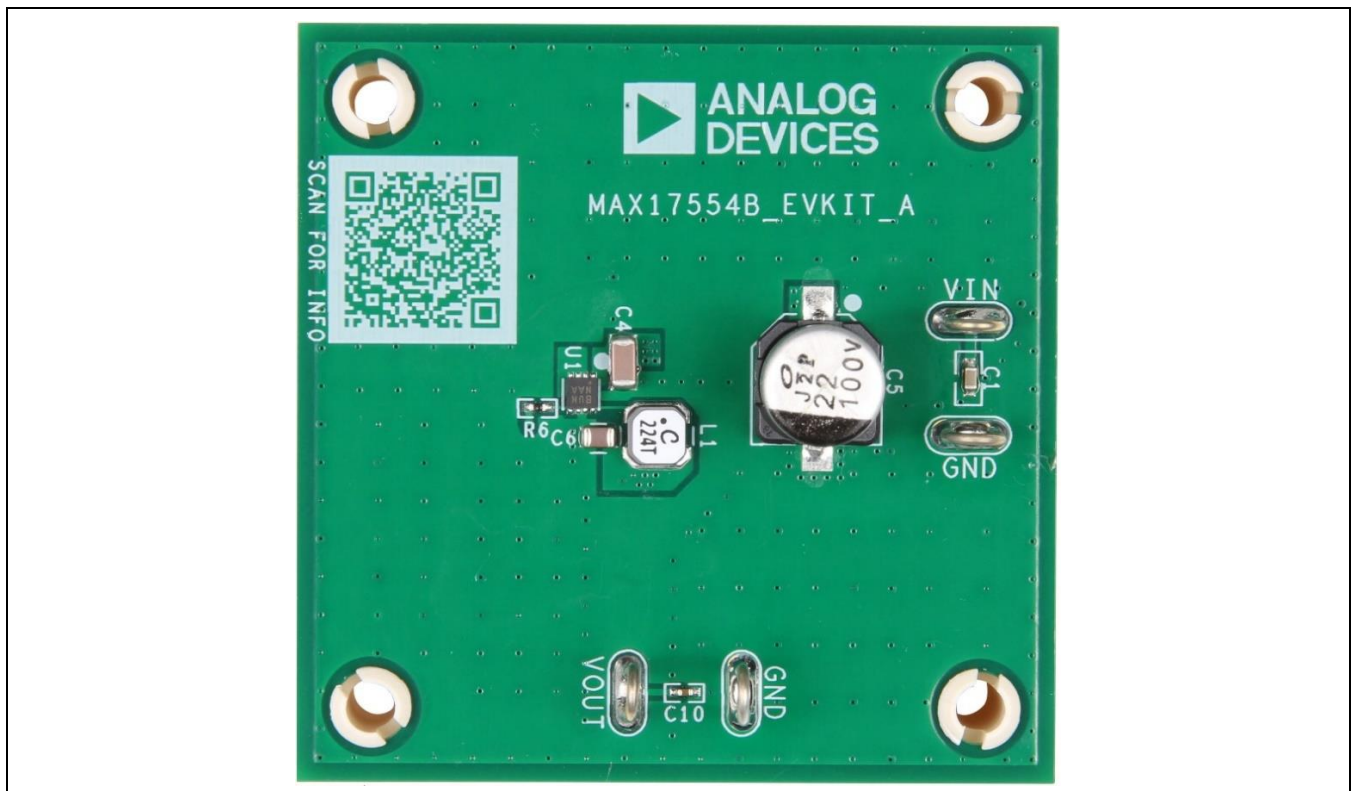
The EV kit is simple to use and easily configurable with minimal external components. The MAX17554B features fixed turn ON/OFF input voltage and 70kHz switching frequency. The device offers built-in hiccup mode protection for overload and short-circuit conditions, and thermal shutdown. The EV kit is complaint with CISPR32 Class B standard.

Features

- 10V to 60V Input-Voltage Range for the Step-Down Converter
- 5V Output Voltage, Up To 50mA Continuous Load Current
- 87.5% Peak Efficiency
- 78.3% Light Load Efficiency at 48V IN, 5V 10mA OUT
- Minimum Number of External Components
- 70kHz Fixed Switching Frequency
- Fixed Turn ON/OFF Input Voltage
- Internal Loop Compensation
- 0.8ms (typ) Internal Soft-Start Time
- Boot-strap from output voltage to Improve Efficiency
- Hiccup-mode Overcurrent and Overtemperature Protection
- Proven PCB Layout
- Fully Assembled and Tested

[Ordering Information](#) at end of data sheet.

EV Kit Top View



Quick Start

Configuration Diagram

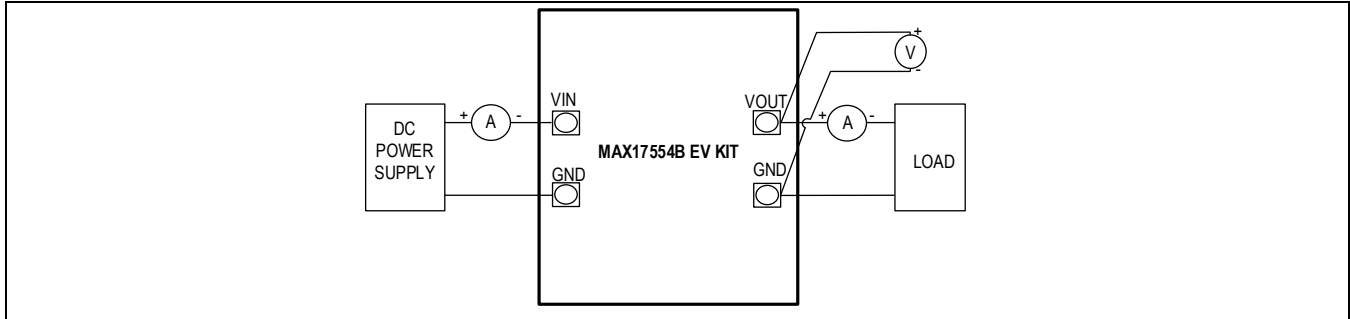


Figure 1. MAX17554B EV Kits Setup Diagram

Required Equipment

- MAX17554BEVKIT#
- 60V adjustable, 0.5A DC power supply
- Load resistors capable of sinking up to 50mA at 5V
- Digital multimeters (DMM)

EV Kit Setup and Procedure

A typical bench setup for the MAX17554B EV kit is shown in [Figure 1](#).

The EV kit is fully assembled and tested. Follow the steps below to verify and test individual converters operation.

Warning:

- Do not turn on the power supply until all connections are completed.
- Do not touch any part of the circuit or conductive materials with bare hands when powered up.
- Make sure all high-voltage capacitors are fully discharged before handling. After disconnecting the input power source, wait for 5 minutes before touching the circuit parts.

Equipment Setup and Procedure

1. Set the power supply to a voltage between 42.5V and 60V. Disable the power supply.
2. Connect the positive terminal of the power supply to the VIN PCB pad and the negative terminal to the nearest GND PCB pad. Connect the positive terminal of the 50mA load to the VOUT PCB pad and the negative terminal to the nearest GND PCB pad.
3. Set the digital multimeter to voltage mode and connect across the VOUT PCB pad and the nearest GND PCB pad.
4. Enable the power supply.
5. Verify that the output voltmeter displays 5V and, if required, measure the output current using a DMM in ammeter mode.
6. If required, vary the input voltage from 10V to 60V, the load current from 0 to 50mA, and verify that the output voltage is 5V with respect to GND.

Detailed Description

The MAX17554B EV kit provides a proven design to evaluate the MAX17554B, 10V to 60V, 50mA ultra-small, high efficiency, synchronous step-down DC-DC converter. The EV kit comes with installed components to deliver 5V, 50mA (max) output current from 10V to 60V input. The MAX17554B works at a fixed 70kHz switching frequency. The EV kit can also be used to verify the output overload or short-circuit protection, and thermal shutdown protection. For more information on how to change the EV kit configuration to a different specification, refer to the MAX17554B IC data sheet.

Hot Plug-in and Long Input Cables

The MAX17554BEVKIT# PCB layout provides an optional electrolytic capacitor (C5). This capacitor limits the peak voltage at the input of the converter when the DC input source is hot-plugged to the EV kit input terminals with long input cables. The equivalent series resistance (ESR) of the electrolytic capacitor dampens the oscillations caused by interaction between the inductance of the long input cables, and the ceramic capacitors at the buck converter input.

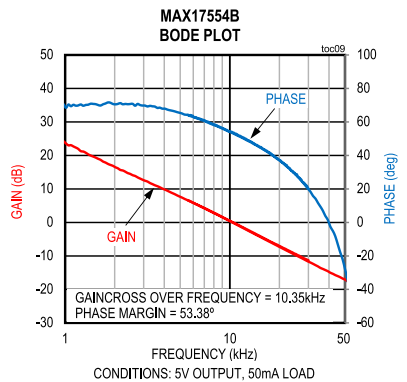
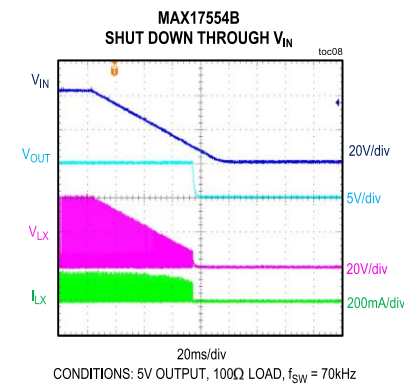
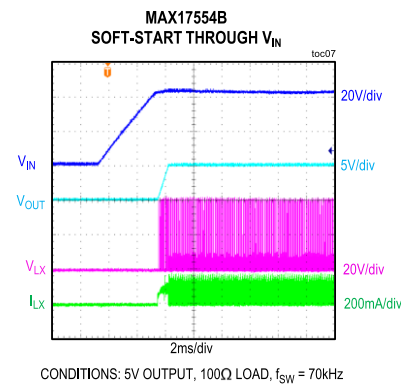
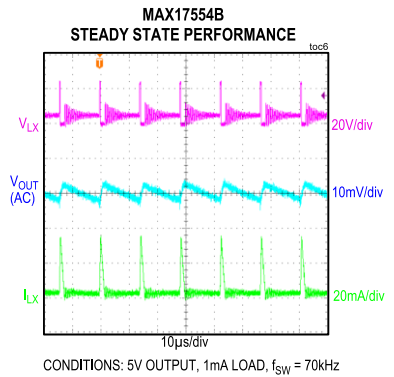
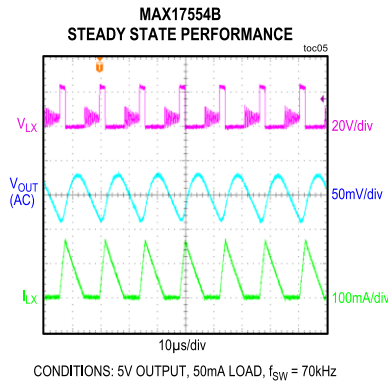
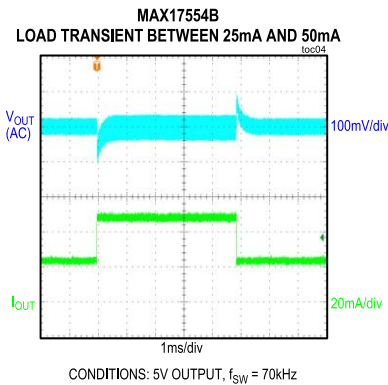
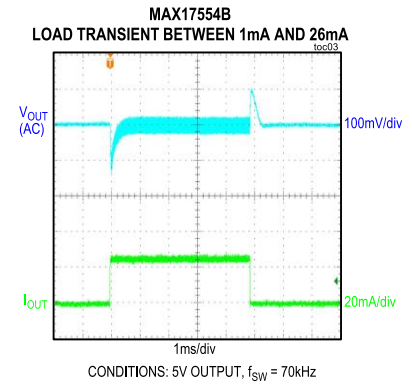
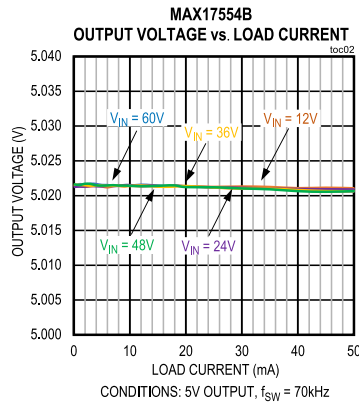
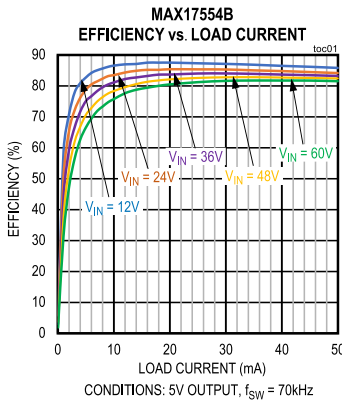
Electromagnetic Interference

Compliance to conducted emission (CE) standards requires an electromagnetic interference (EMI) filter at the input of a switching power converter. The EMI filter attenuates high-frequency currents drawn by the switching power converter and limits the noise injected back into the input power source.

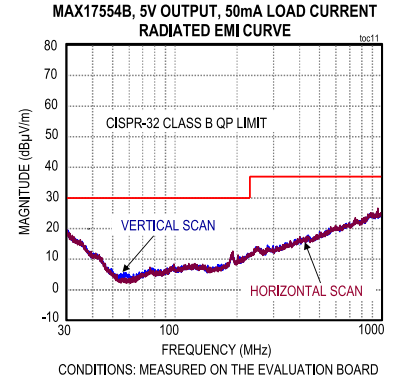
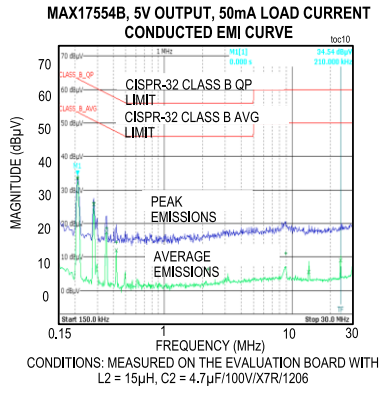
The MAX17554BEVKIT# has designated footprints for the placement of conducted EMI filter components as per the bill of material (BOM). Use of these filter components results in lower conducted EMI below CISPR32 Class B limits. Cut open the trace at L2 before installing the conducted EMI filter components. The EV kit layout is also designed to limit radiated emissions from switching nodes of the power converter and complies with CISPR32 Class B RE limits.

MAX17554B EV Kit Performance

($V_{IN} = V_{EN} = 24V$, $T_A = +25^\circ C$, unless otherwise noted.)



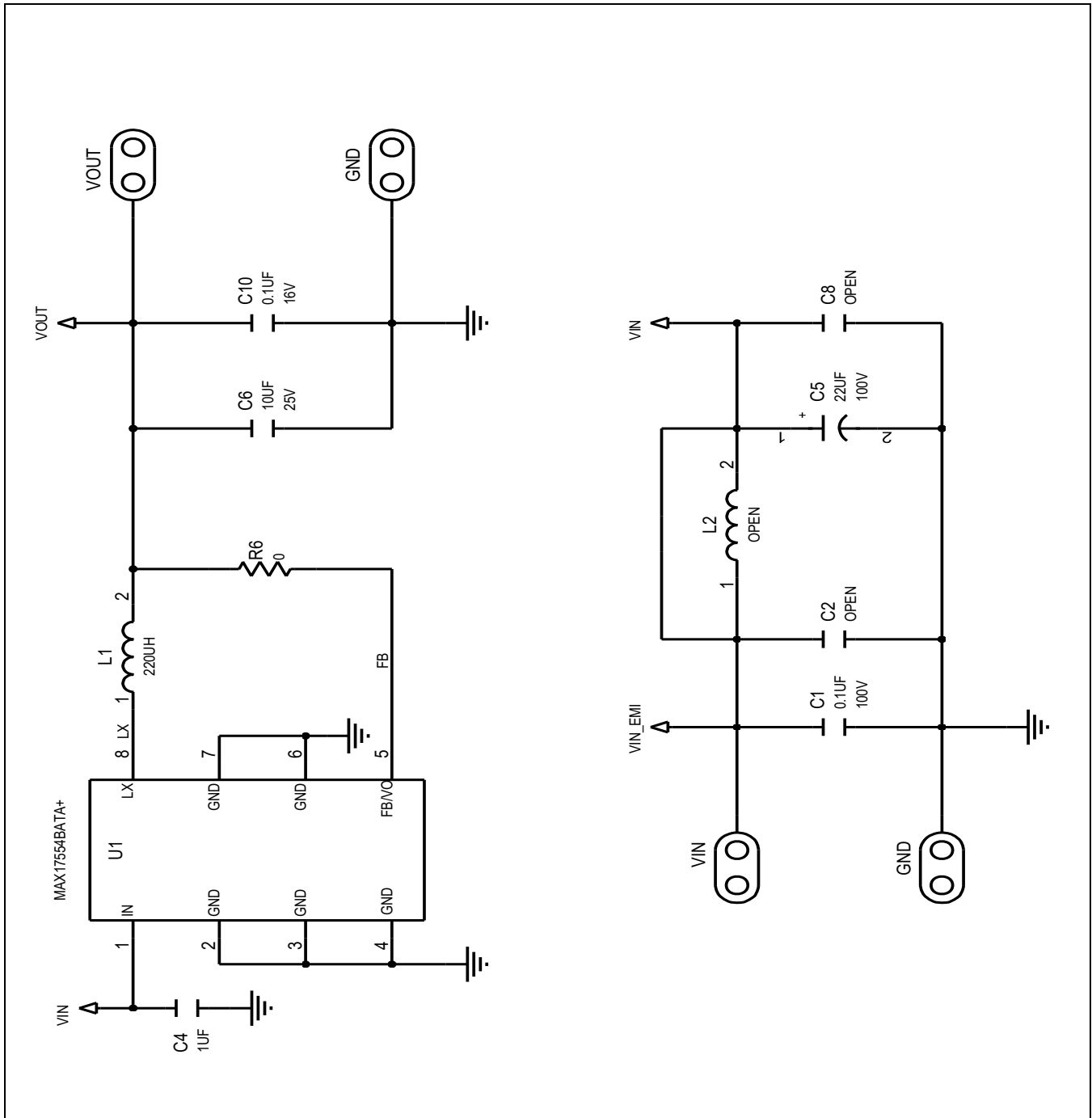
MAX17554B EV Kit Performance(continued)



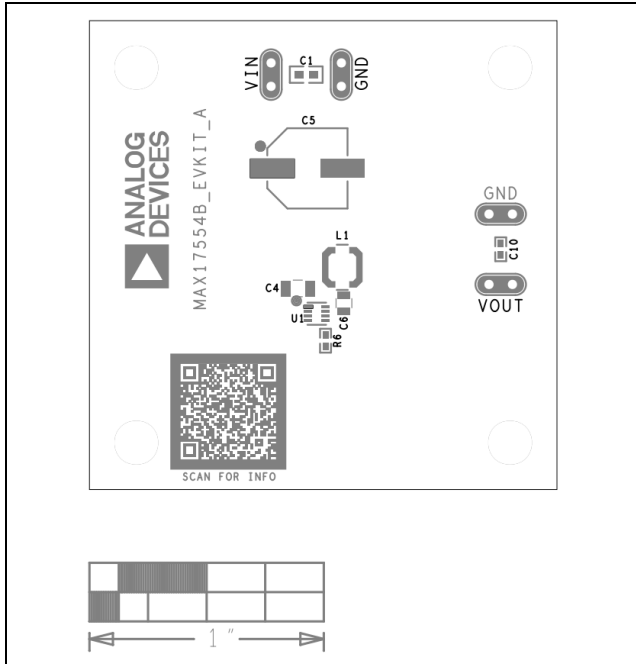
MAX17554B EV Kit Bill of Materials

ITEM	QTY	DESIGNATOR	DESCRIPTION	MANUFACTURER PART NUMBER
1	1	C1	0.1 μ F, 10%, 100V, X7R, Ceramic capacitor (0603)	MURATA GRM188R72A104KA35
2	1	C4	1 μ F, 10%, 100V, X7R, Ceramic capacitor (1206)	TDK C3216X7R2A105K160AA
3	1	C5	22 μ F, 20%, 100V, Electrolytic capacitor	PANASONIC EEE-TG2A220UP
4	1	C6	10 μ F, 10%, 25V, X7R, Ceramic capacitor (0805)	MURATA GRM21BZ71E106KE15
5	1	C10	0.1 μ F, 10%, 16V, X7R, Ceramic capacitor (0402)	MURATA GRM155R71C104KA88
6	1	R6	0 Ω , 1/10W, resistor (0402)	PANASONIC ERJ-2GE0R00
7	1	L1	INDUCTOR, 220 μ H, 0.24A	COILCRAFT LPS4018-224MR
8	1	U1	10V to 60V, 50mA, Step-Down DC-DC Converter	MAXIM MAX17554BATA+
9	0	L2	INDUCTOR, 15 μ H, 0.58A	COILCRAFT LPS3015-153MR
10	0	C2	4.7 μ F, 10%, 100V, X7R, Ceramic capacitor (1206)	MURATA GRM31CZ72A475KE11
11	0	C8	Ceramic capacitor (1206)	NA

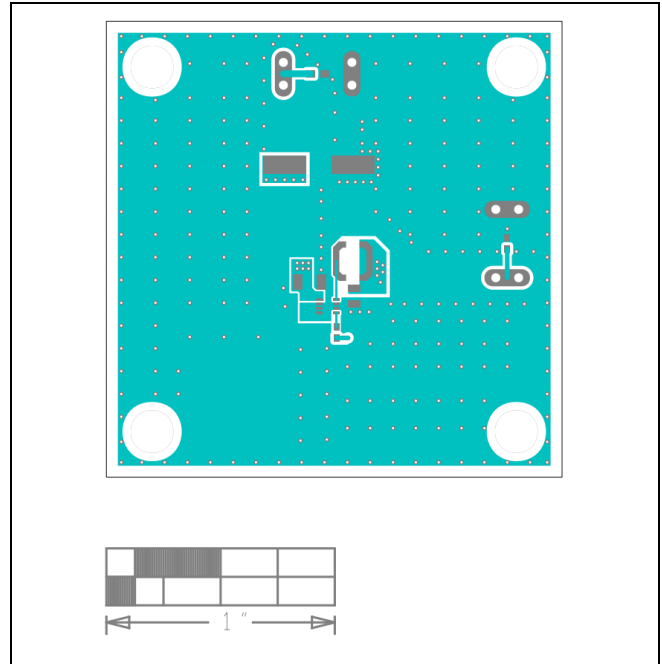
MAX17554B EV Kit Schematic Diagram



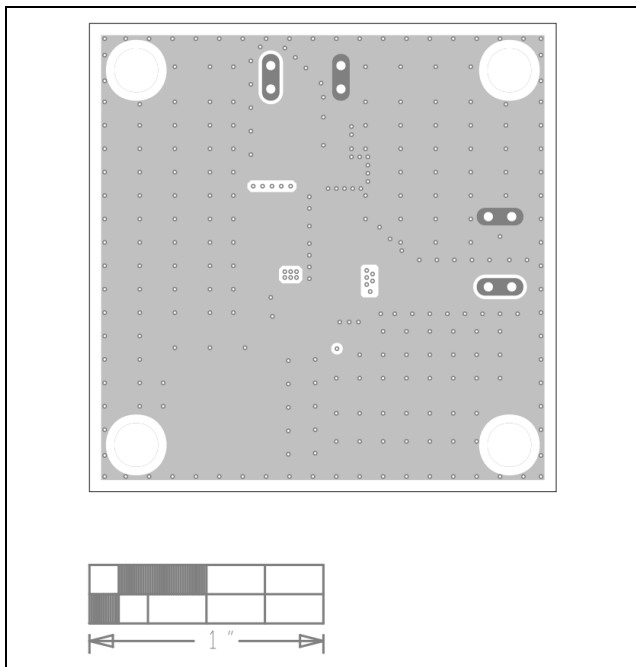
MAX17554B EV Kit PCB Layout



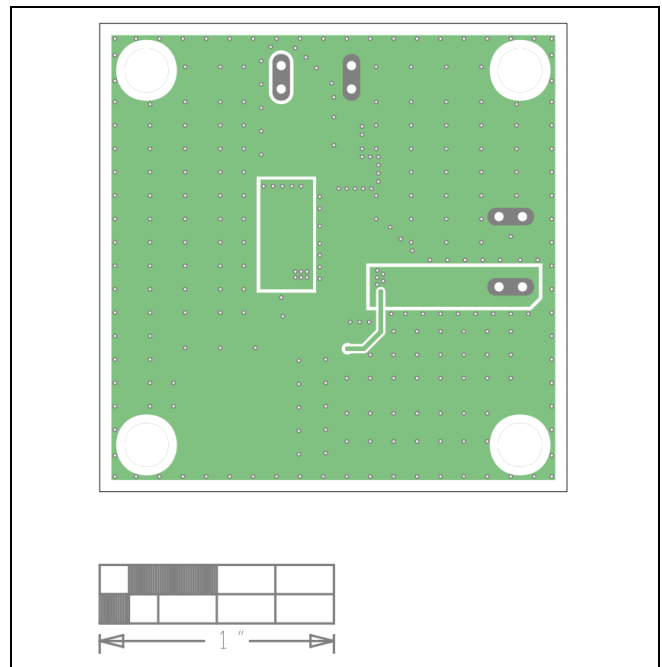
MAX17554B EV Kit Component Placement Guide—Top Silkscreen



MAX17554B EV Kit PCB Layout—Top

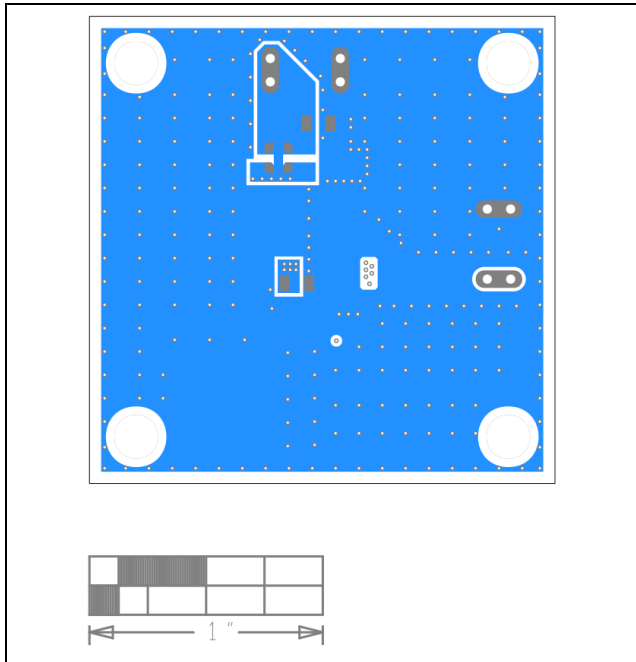


MAX17554B EV Kit PCB Layout—Layer 2

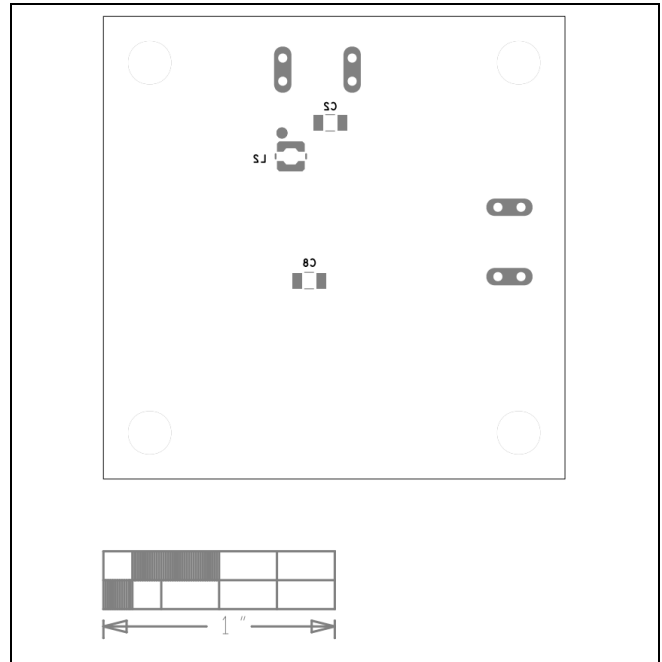


MAX17554B EV Kit PCB Layout—Layer 3

MAX17554B EV Kit PCB Layout (continued)



MAX17554B EV Kit PCB Layout—Bottom



MAX17554B EV Kit Component Placement Guide—Bottom Silkscreen

Ordering Information

PART NUMBER	TYPE
MAX17554BEVKIT#	EV Kit

Denotes RoHS compliant.

Component Suppliers

SUPPLIER	WEBSITE
Coilcraft Inc	www.coilcraft.com
Murata Americas	www.murata.com
Vishay Intertechnology	www.vishay.com
Panasonic Corp	www.panasonic.com

Revision History

REVISION NUMBER	REVISION DATE	DESCRIPTION	PAGES CHANGED
0	04/22	Initial release	—

