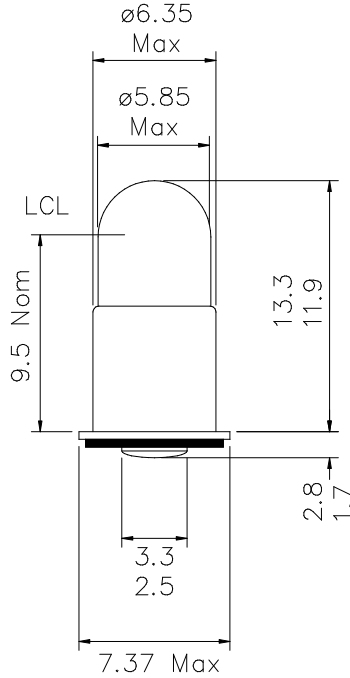


**PRODUCT
DATA SHEET**

Type	Size	Rating	Description	Part No.
Incandescent	T6	12V 0.1A	T-1¾ Midget Flange Lamp	725



Drawing Not To Scale
All Dimensions In mm

PHOTOMETRY DATA

TEST VOLTS	CURRENT (mA)			LIGHT OUTPUT (Lm)			LIFE (Hours)
	Min.	Nom.	Max.	Min.	Nom.	Max.	
12.0	90	100	110	3.7	5.0	6.3	5,000

NOTES:

- 1) SX6 base to IEC61-1, (EN60061-1), sheet 7004061-x.
- 2) Bulb and shell portion of cap shall enter a cylindrical hole (gauge) 13.5mm MIN. deep x diameter 6.375 ± 0.005 mm
- 3) Solder joint on cap shell, where utilised, shall be free from pin-holes or voids.
- 4) C-2V filament shape.
- 5) Lamp Marking: "CML 725 12V 100mA", to be engraved on the cap shell. Other marking as according to purchase order.
- 6) Lamp components are lead-free

Issue No.	Date	C.N. No.	Drawn	Tech	QA	Sales
3	05/10/06	A053	NR			