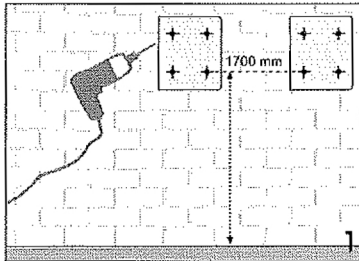


Montage / Assembly

ultraMEDIC

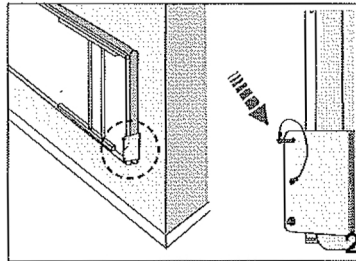
Art.Nr. 2210201

Mindestraumbreite für Montage- 2100 mm / min. room width for assembly- 2100 mm

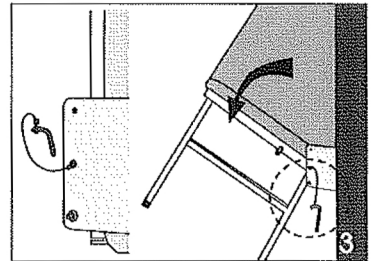


Bohr-Schablone verwenden (umseitig)
 Höhe ab Boden: 572 mm
 optional: 392 mm
 waagerechter Bohrabstand: 1700 mm

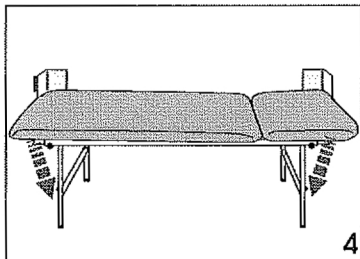
Use boring template (overleaf)
 Height from floor: 572 mm
 optional: 392 mm
 horizontal boring distance: 1700 mm



Hochgeklappte Liege mit Stift sichern
 Secure lifted couch with safety lock

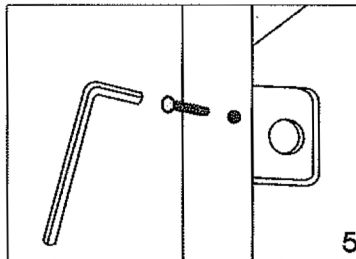


Stift lösen; Liege abklappen
 Release safety lock; lower couch



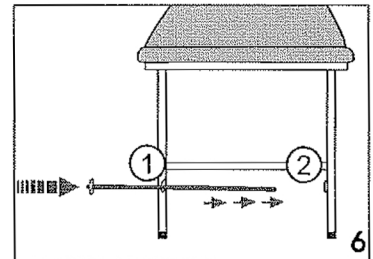
Papierrollen-Halter am Fuß- oder Kopfende befestigen

Paper roll holder may be adjusted on foot or head end



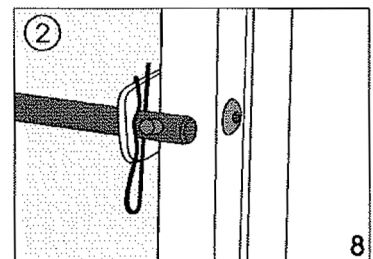
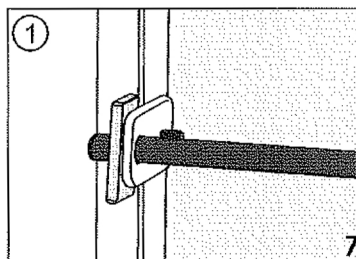
Aufnahmeflansch (2x) an gewünschter Position anschrauben

Fix holding flange (2x) in the desired position

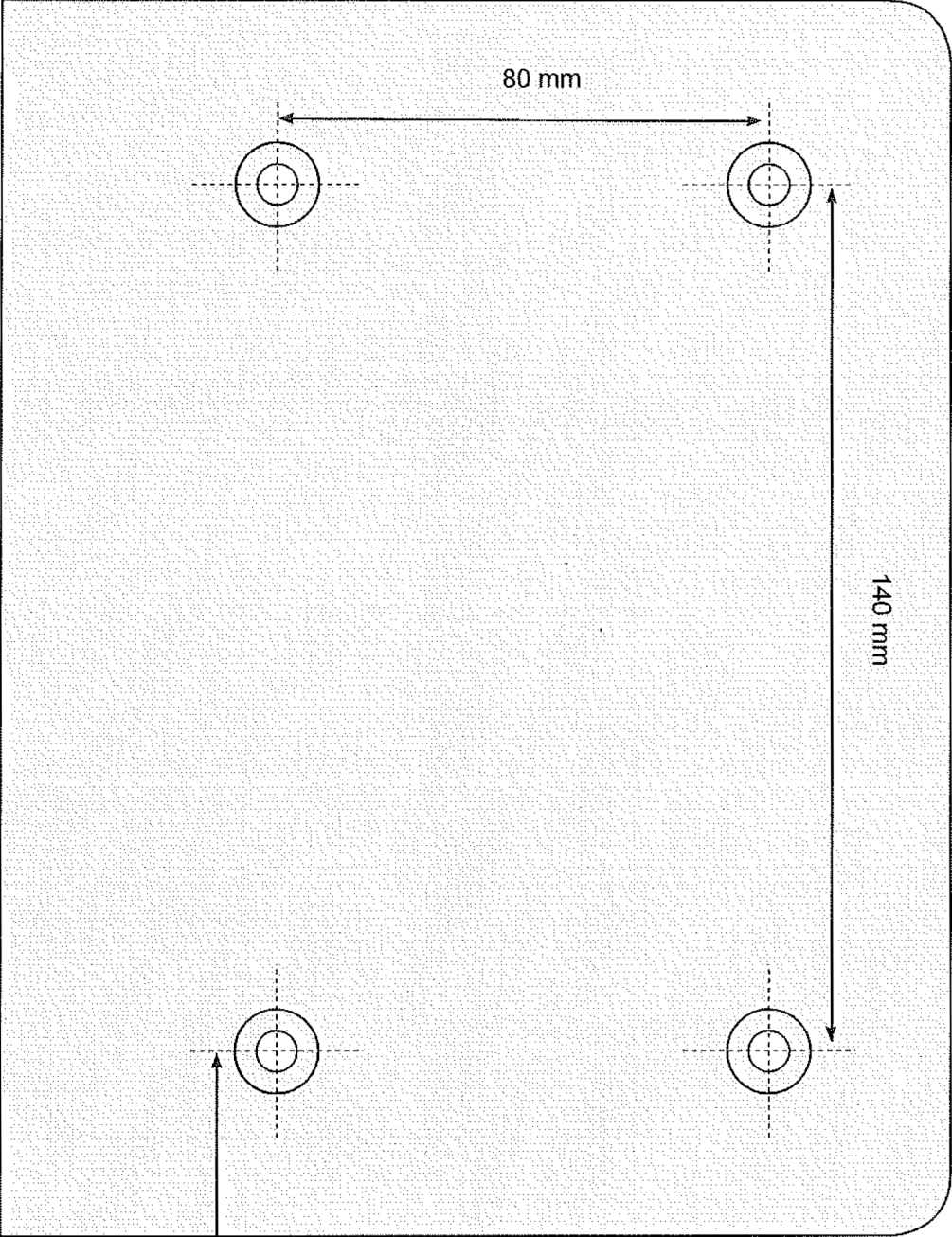


Stange einschieben

Insert paper roll holder



Bohr-Schablone / Boring template



SAN-0146-* / 0143-*
Höhe ab Boden: Height
from floor:

572 mm

SAN-0227-* optional:

392 mm