

PT-6

6 mm Carbon Potentiometer



FEATURES

- Carbon resistive element.
- IP54 protection according to IEC 60529.
- Polyester substrate.
- SMD version available (see PS-6 datasheet).
- Also upon request:
 - Wiper positioned at initial, 50% or fully clockwise.
 - Supplied in magazines for automatic insertion.
 - Long life model (10K cycles).
 - Housing available in self extinguishable plastic (UL94V0).
 - Mechanical detents.

MECHANICAL SPECIFICATIONS

- Mechanical Rotation angle: $235^\circ \pm 5^\circ$
- Electrical Rotation angle: $200^\circ \pm 20^\circ$
- Torque: 0.2 to 2 Ncm. (0.3 to 2.7 in-oz)
- Stop torque: > 4 Ncm. (> 5.6 in-oz)
- Life*: Up to 10K cycles

* Others check availability.

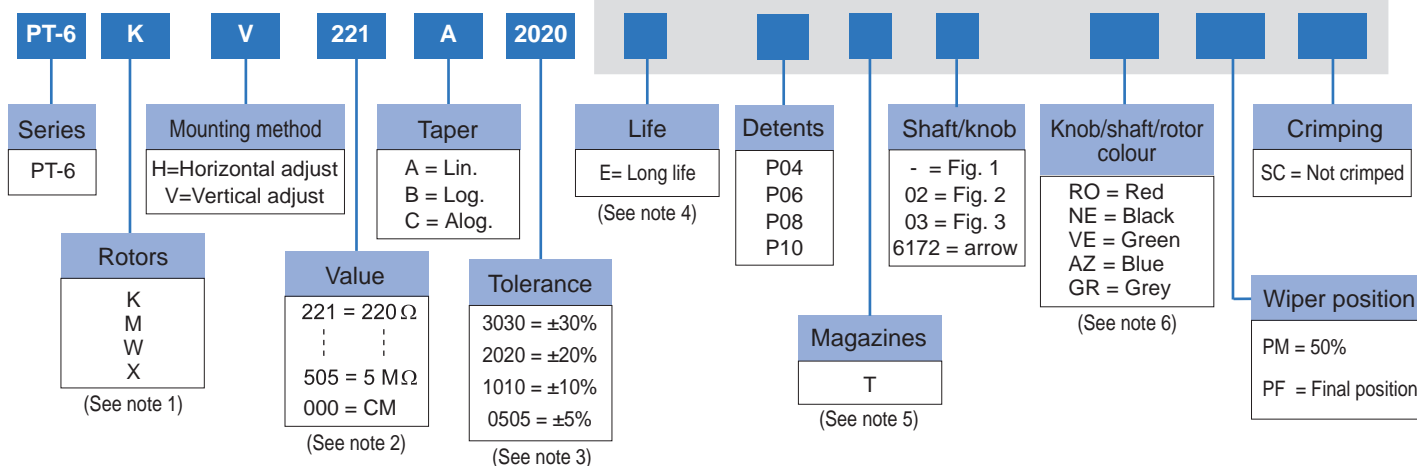
** Up to 85°C depending on application.

ELECTRICAL SPECIFICATIONS

- Range of values*
 $220\Omega \leq R_n \leq 5M$ (Decad. 1.0 - 2.0 - 2.2 - 2.5 - 4.7 - 5.0)
- Standard tolerance*: $220\Omega \leq R_n \leq 1M\Omega$ $\pm 20\%$
 $1M\Omega < R_n \leq 5M\Omega$ $\pm 30\%$
- Max. Voltage: 100 VDC (lin), 50 VDC (no lin)
- Nominal Power 50°C (122°F) (see power rating curve)
0.1 W (lin) 0.05 W (no lin)
- Taper*: Lin; Log; Alog (Log & Alog. only $R_n \geq 1K$)
- Residual resistance*: $\leq 0.5\% R_n$ (5Ω min)
- Equivalent Noise Resistance: $\leq 3\% R_n$ (3Ω min)
- Operating Temperature**: -25°C +70°C (-13°F +158°F)

HOW TO ORDER

OPTIONAL EXTRAS

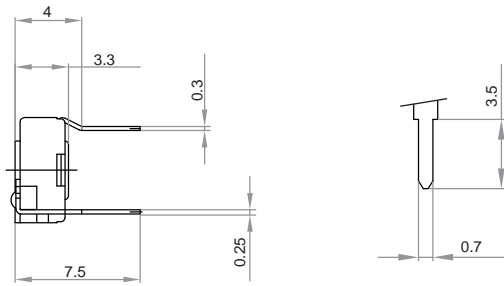


NOTES:

- Adjust. type: «X» is only available with horizontal adjusting method.
- Value: - Code: $\frac{22}{1} = 220\Omega$
 - 000 = CM = switch version (contact us)
 → Number of zeros
 → First two digits.
- Tolerance (non standard, custom): check availability..... Code eg.: $\frac{+7}{-5} = \frac{07}{05}$
 → Negative tolerance
 → Positive tolerance
- Life: • Standard = 1000 cycles • Long = 10K cycles (non-detented models)
- Only for "V" mounting method. "W" rotor with shaft Fig. 2 is not available in magazines.
- Potentiometer without knob or shaft, only the rotor. Potentiometer with knob or shaft, only the knob/shaft. Default colour for knob/shaft is cream. Shaft only available in cream or black colour.

Online product configurator: <https://piher.net/configurator/2017/08/24/pt6-6-configurator-potentiometer/>

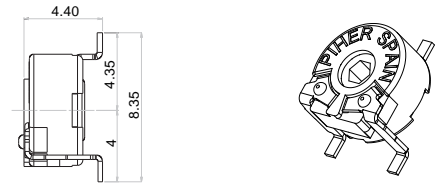
NOT-CRIMPED TERMINALS DIMENSIONS



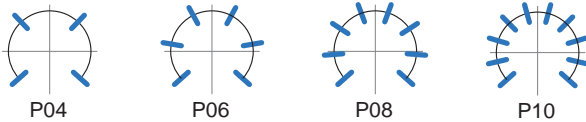
SMD VERSION

SMD / SMT version available:

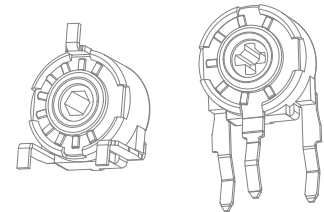
See N-6 and PS(x)-6 product datasheets at: www.pihher.net



STANDARD DETENT CONFIGURATIONS



— Relative detent positions along the total mechanical travel.



Examples of custom configurations.

NOTES FOR DETENTED VERSIONS:

- (1) All detented versions will be studied case by case. Contact Piher for leadtimes and availability.
- (2) Others check availability. Unless otherwise specified the detents are evenly spaced (using the end points as reference).
For more than 10 detents versions please contact your nearest PIHER authorised distributor.
- (3) Standard mechanical life: 100 cycles.
- (4) Long life versions are available under request and have the following characteristics at T[°]:
- Potentiometers with 1 to 3 detents: up to 10K cycles.
- Potentiometers with 4 and more detents: up to 5K cycles.
- (5) Detent torque can vary from 1.2 to 2.5 times the standard potentiometer torque.

PACKAGING

BOXES

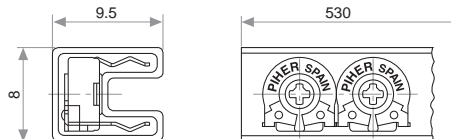
Model

All

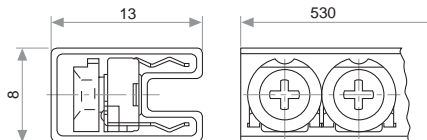
Units

1.000

Magazines for PT-6 V with or without crimp.



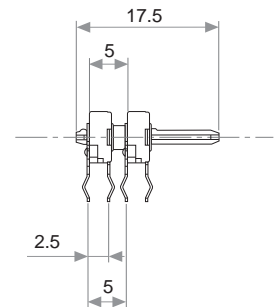
Magazines for PT-6 WV with or without crimp.



PT-6 DUAL GANG VERSION

Ref.: 6060

For PT-6 dual gang version contact your nearest PIHER supplier



AUTOMATIC INSERTION

Magazines

PT-6 V & PT-6 WV

Units per magazine

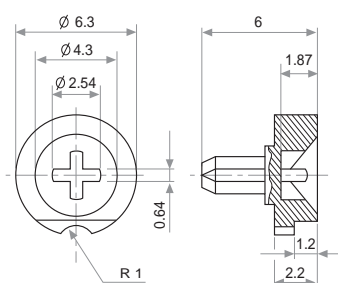
80 Pieces

KNOBS

If you wish to use your own custom plastic shaft/knob/actuator please contact Piher for advice about compatible materials.

Ref.: 5155 / Fig. 1

Default knob. Standard colour: white.



Ref.: 5141 / Fig. 3

Colour: grey. For other colours check availability.

