

4

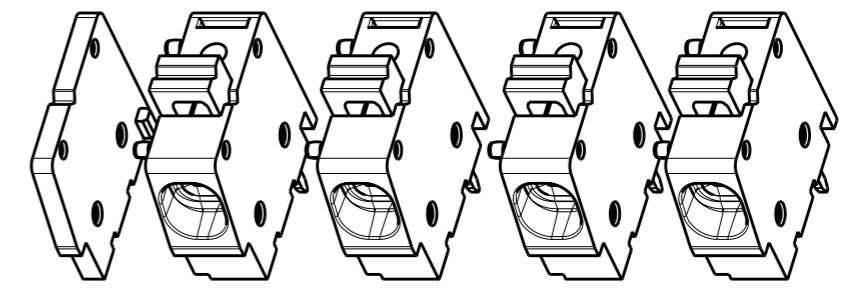
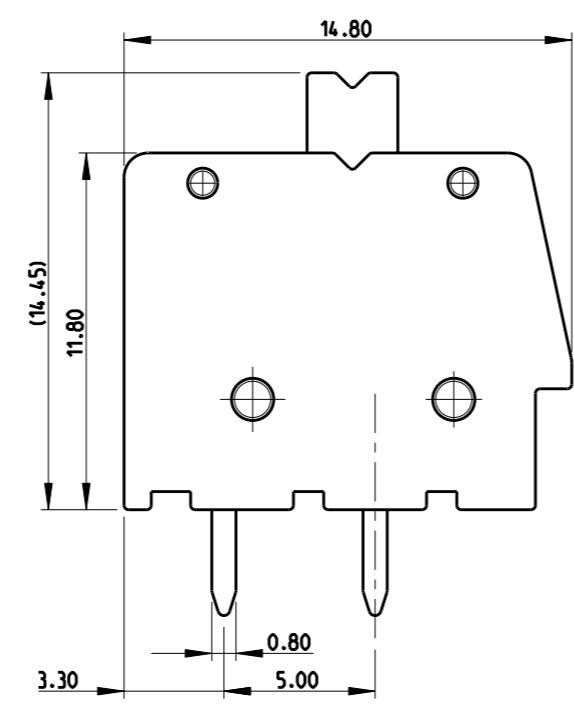
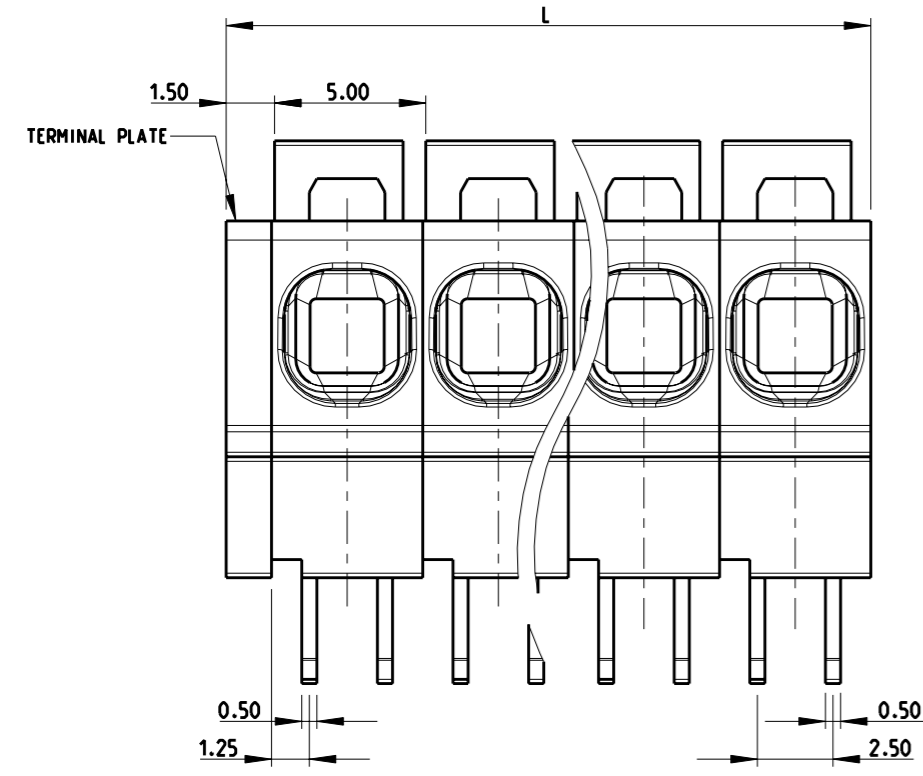
3

2

1

THIS DRAWING IS UNPUBLISHED. RELEASED FOR PUBLICATION 2011
 © COPYRIGHT 2011 ALL RIGHTS RESERVED.

LOC	DIST	REVISIONS			
P	LTR	DESCRIPTION	DATE	DWN	APVD
FT	0	A	REVISED PER ECO-12-002880	14FEB12	KH MS



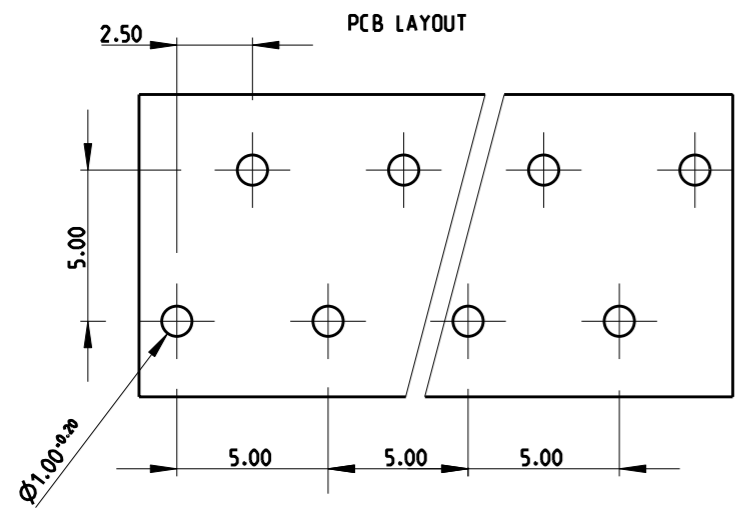
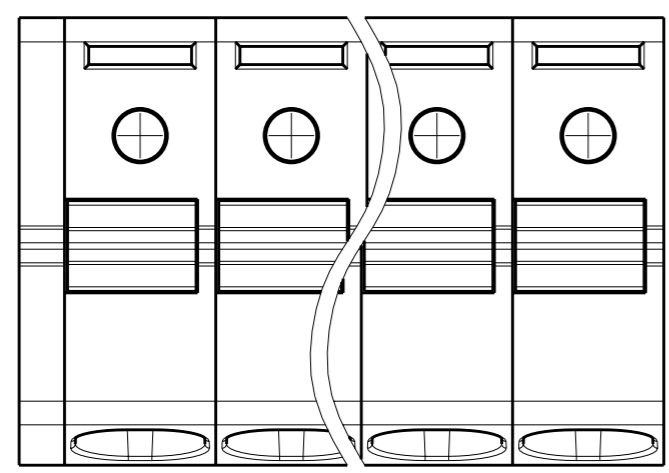
SCALE 2:1
-4 AS SHOWN


126.50	25	2-1986711-5
121.50	24	2-1986711-4
116.50	23	2-1986711-3
111.50	22	2-1986711-2
106.50	21	2-1986711-1
101.50	20	2-1986711-0
96.50	19	1-1986711-9
91.50	18	1-1986711-8
86.50	17	1-1986711-7
81.50	16	1-1986711-6
76.50	15	1-1986711-5
71.50	14	1-1986711-4
66.50	13	1-1986711-3
61.50	12	1-1986711-2
56.50	11	1-1986711-1
51.50	10	1-1986711-0
46.50	9	1986711-9
41.50	8	1986711-8
36.50	7	1986711-7
31.50	6	1986711-6
26.50	5	1986711-5
21.50	4	1986711-4
16.50	3	1986711-3
11.50	2	1986711-2
"L"	POLE	PART NO

MATERIALS:
 HOUSING - POLYAMIDE, COLOR - GREEN
 CLAMPING SPRING - STEEL
 PIN - COPPER ALLOY - TIN PLATED

MECHANICAL
 PCB THICKNESS - 2.40 MAX
 PCB HOLE DIAMETER - 1.20 MIN
 STRIP LENGTH - 10-11 MM
 OPERATING TEMPERATURE - -40°C TO +110°C

ELECTRICAL
 WIRE RANGE- 30 TO 12 AWG
 VOLTAGE RATING- 300 VOLTS
 CURRENT RATING-16 AMP
 CONTACT RESISTANCE-15 MILLOHM MAX
 INSULATION RESISTANCE-10⁹ OHMS MIN (500V DC)



THIS DRAWING IS A CONTROLLED DOCUMENT.		DWN 08AUG2011 RAGHAVENDRA	 TE Connectivity	
DIMENSIONS: mm		CHK 08AUG2011 SARVER MICHAEL		
TOLERANCES UNLESS OTHERWISE SPECIFIED:		APVD 08AUG2011 SARVER MICHAEL	NAME SPRING TYPE, SIDE WIRE ENTRY TERMINAL BLOCK SIDE STACKABLE STRAIGHT 02 - 25 POLES PITCH 5.00mm	
0 PLC ±.5 1 PLC ±.25 2 PLC ±.25 3 PLC ±.25 4 PLC ±.25 ANGLES ±1°		PRODUCT SPEC	RESTRICTED TO	
MATERIAL - FINISH -		APPLICATION SPEC	SIZE A3	CAGE CODE 00779
		WEIGHT -	DRAWING NO C-1986711	
		CUSTOMER DRAWING	SCALE 4:1	SHEET 1 OF 1 REV A