

## har-modular fixing rail 25,30

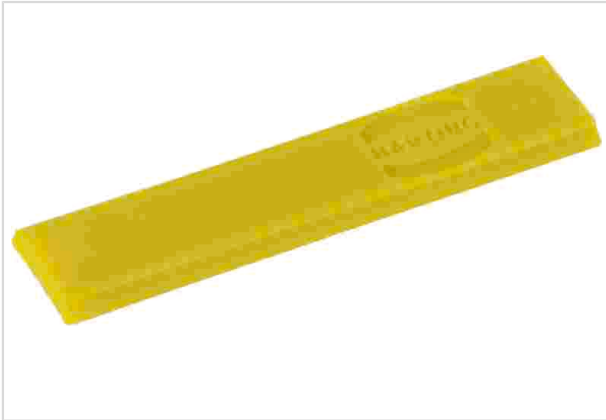


Image is for illustration purposes only. Please refer to product description.

Part number	02 09 500 1005
Specification	har-modular fixing rail 25,30
HARTING eCatalogue	<a href="https://b2b.harting.com/02095001005">https://b2b.harting.com/02095001005</a>

### Identification

Category	Accessories
Series	har-modular®
Type of accessory	Fixing rail

### Technical characteristics

Isolation group	I ( $600 \leq CTI$ )
Moisture Sensitivity Level (MSL)	1 acc. to ECA/IPC/JEDEC J-STD-020D

### Material properties

Material	Polyamide (PA)
Colour	Yellow
Length	25.3 mm

### Commercial data

Packaging size	1
Country of origin	Romania
European customs tariff number	85389099
eCl@ss	27440292 Connector component (accessories)