

Sturdy angle base

Accessories push rods tensioner



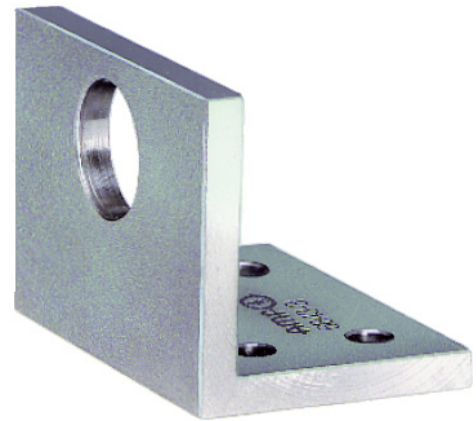
Application:

For securing the push rod clamp.

Execution:

- Enhances areas of application thanks to greater clamping height
- For installation in fixtures
- Attachment using 4 screws

Art. no.	26218 520
Brand	AMF
Manufacturer Part Number	94029
Size	2
Width	60 mm
Max. depth	40 mm
Locating bore hole diameter	16.2 mm
Distance between centre and drill hole	24 mm
Clearance	11 mm
Hole distance	18 mm
Min./max. hole distance	11-18 mm
Hole distance 2	40 mm
Gross Weight	0.219 kg
Product Group	260



EAN

4020772094027