



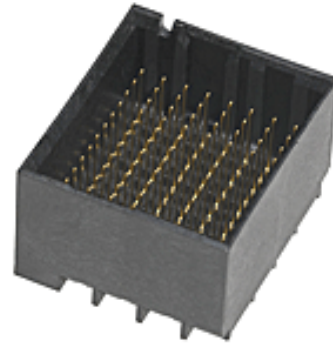
Part Number : [761551828](#)

Product Description : Impact 100 Ohm 4 Pair Vertical Backplane Header, Unguided, Dual Endwall, 8 Columns, 96 Circuits, Pin Length 5.50mm, Plated Through Hole Dimension 0.39mm, Lead-Free

Series Number : 76155

Status : Active

Product Category : Backplane Connectors



Documents & Resources

Drawings

[Drawing 761551828_sd.pdf](#)

[Packaging Design Drawing PK-70873-7701-001.pdf](#)

3D Models and Design Files

[3D Model 761551828_stp.zip](#)

[Symbol Footprint Data SYM-76155-1828-001.zip](#)

Specifications

[Application Specification AS-76060-994-001.pdf](#)

[Product Specification PS-45499-002-001.pdf](#)

[Test Summary TS-76160-0001-001.pdf](#)

Product Environment Compliance

Compliance

GADSL/IMDS	Compliant with Exemption 44; 34; 33
China RoHS	
EU ELV	Not Relevant
Low-Halogen Status	Low-Halogen per IEC 61249-2-21
REACH SVHC	Not Contained per D(2023)3788-DC (14 Jun 2023)
EU RoHS	Compliant per EU 2015/863

Multiple Part Product Compliance Statements

- Eu RoHS

- REACH SVHC

- Low-Halogen

Multiple Part Industry Compliance Documents

- IPC 1752A Class C
- IPC 1752A Class D
- Molex Product Compliance Declaration
- IEC-62474
- chemSHERPA (xml)

EU RoHS Certificate of Compliance

Part Details

General

Status	Active
Category	Backplane Connectors
Series	76155
Description	Impact 100 Ohm 4 Pair Vertical Backplane Header, Unguided, Dual Endwall, 8 Columns, 96 Circuits, Pin Length 5.50mm, Plated Through Hole Dimension 0.39mm, Lead-Free
Application	Conventional
Component Type	PCB Header
Product Family	Impact Backplane Connector and Cable Assembly System
Product Name	Impact
UPC	883906416768

Agency

UL	E29179
----	--------

Electrical

Current - Maximum per Contact	0.75A
Data Rate	25.0 Gbps
Impedance	100Ω
Shield Type	N/A
Shielded	No
Voltage - Maximum	30V AC (RMS)/DC

Physical

Circuits (Loaded)	96
Circuits (maximum)	96
Color - Resin	Black
Durability (mating cycles max)	200
First Mate / Last Break	No
Flammability	94V-0
Guide to Mating Part	No
Keying to Mating Part	None
Material - Metal	High Performance Alloy (HPA)
Material - Plating Mating	Gold
Material - Plating Termination	Tin
Material - Resin	High Temperature Thermoplastic
Net Weight	2.787/g
Number of Columns	8
Number of Pairs	4
Number of Rows	12
Orientation	Vertical
Packaging Type	Tray
PC Tail Length	1.40mm
PCB Locator	No
PCB Retention	None
PCB Thickness - Recommended	1.00mm
Pitch - Mating Interface	1.90mm
Pitch - Termination Interface	1.90mm
Plating min - Mating	0.762µm
Polarized to PCB	No
Stackable	No
Temperature Range - Operating	-55° to +85°C
Termination Interface Style	Through Hole - Compliant Pin

Solder Process Data

Lead-Free Process Capability	N/A
------------------------------	-----

Mates With / Use With

Mates with Part(s)

Description	Part Number
Impact 100 Ohm 4 Pair Right-Angle Daughtercard Receptacles	<u>76160</u>

Use with Part(s)

Description	Part Number
GbX Backplane Guide Pins	<u>75234</u>