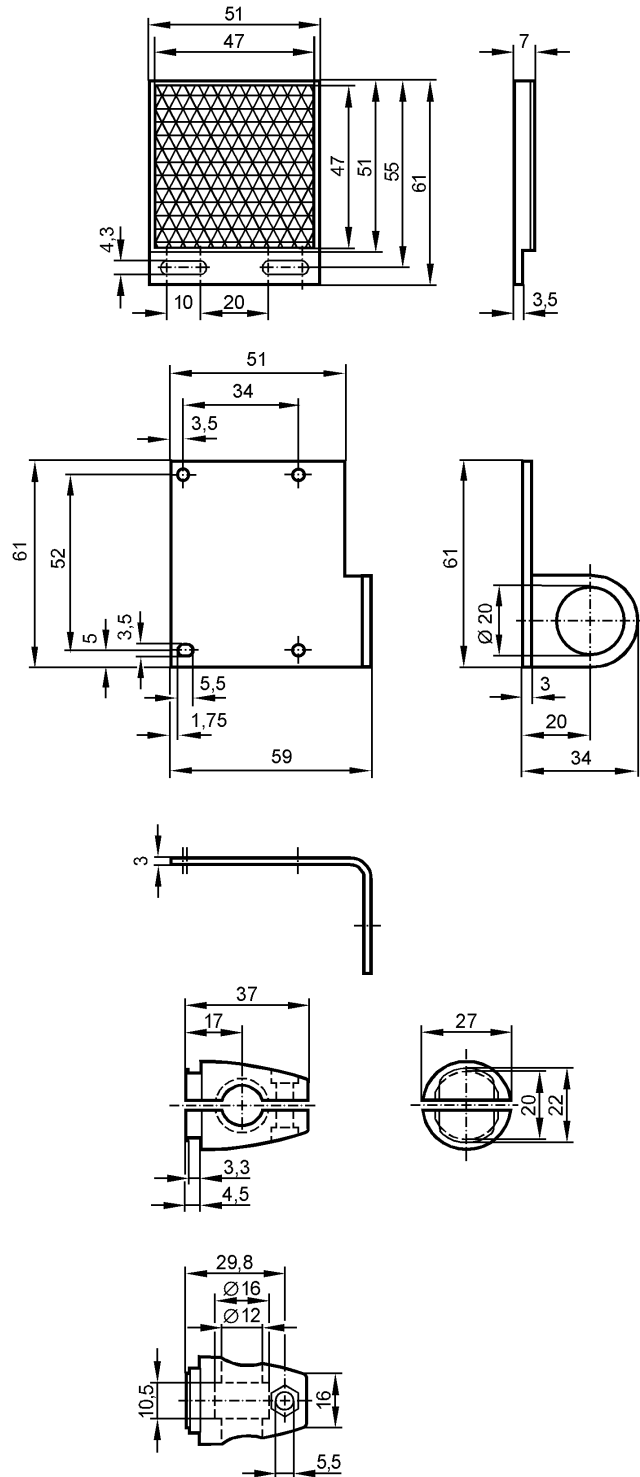


SYSTEM COMPONENT REFLECTOR

Accessories



Product characteristics

Mounting set

Clamp mounting

Tests / approvals

EMC

EN 60947-5-2

Mechanical data

Design

for reflector

Housing materials

fixture: stainless steel 316Ti / 1.4571; clamp: diecast zinc

E21001 - Mounting set - eclass: 27279202 / 27-27-92-02

Type of mounting	Free-standing M10
Weight [kg]	0.262
Accessories	
Accessories (included)	Head cap screw; M10 x 55
Remarks	
Pack quantity [piece]	1

ifm electronic gmbh • Friedrichstraße 1 • 45128 Essen — We reserve the right to make technical alterations without prior notice. — GB — E21001 — 06.03.2003