

HOLDER FOR 3 MODULES, METAL



Figure similar

product brand name	SIRIUS ACT
Product designation	Commanding and signaling devices
Design of the product	Holder
Manufacturer article number	
<ul style="list-style-type: none"> of the supplied holder 	3SU1550-0AA10-0AA0

Actuator:	
Design of the operating mechanism	3-way without module
Number of contact modules	0

Holder:	
Material of the holder	Metal

Display:	
Number of LED modules	0

General technical data:	
Product function	
<ul style="list-style-type: none"> positive opening 	No
Product component	
<ul style="list-style-type: none"> diode lamp transformer Light source series resistor 	No No No No
Insulation voltage	
<ul style="list-style-type: none"> Rated value 	500 V
Degree of pollution	3
Shock resistance	

• acc. to IEC 60068-2-27	Sinusoidal half-wave 50 g / 11 ms
Vibration resistance	
• acc. to IEC 60068-2-6	10 ... 500 Hz: 5g
Surge voltage resistance Rated value	6 kV
Mechanical service life (switching cycles)	
• typical	10
Equipment marking	
• acc. to DIN EN 61346-2	U
• acc. to DIN EN 81346-2	U

Auxiliary circuit:

Number of NC contacts	
• for auxiliary contacts	0
Number of NO contacts	
• for auxiliary contacts	0
Number of CO contacts	
• for auxiliary contacts	0

Connections/ Terminals:

Tightening torque	
• for grounding	0.8 ... 1 N·m

Ambient conditions:

Ambient temperature	
• during operation	-25 ... +70 °C
• during storage	-40 ... +80 °C

Installation/ mounting/ dimensions:

Mounting type	
• of modules and accessories	Front plate mounting
Height	40 mm
Width	30 mm
Shape of the installation opening	round

Certificates/ approvals:

Further information

Information- and Downloadcenter (Catalogs, Brochures,...)

<http://www.siemens.com/industrial-controls/catalogs>

Industry Mall (Online ordering system)

<http://www.siemens.com/industrymall>

Cax online generator

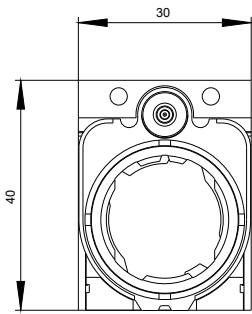
<http://support.automation.siemens.com/WW/CAXorder/default.aspx?lang=en&mlfb=3SU15500AA100AA0>

Service&Support (Manuals, Certificates, Characteristics, FAQs,...)

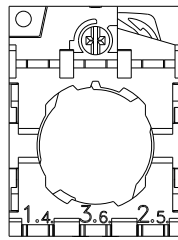
<https://support.industry.siemens.com/cs/ww/en/ps/3SU15500AA100AA0>

Image database (product images, 2D dimension drawings, 3D models, device circuit diagrams, EPLAN macros, ...)

http://www.automation.siemens.com/bilddb/cax_de.aspx?mlfb=3SU15500AA100AA0&lang=en



last modified:



27.04.2015