

PLEASE CHECK WWW.MOLEX.COM FOR LATEST PART INFORMATION

Part Number: [1704151618](#)
Status: **Active**
Overview: Impact Backplane Connector and Cable Assembly System
Description: Impact 100 Ohm 3 Pair Mezzanine Receptacle, Unguided, 18.00mm Stack Height, 6 Columns, 54 Circuits, Plated Through Hole Dimension 0.39mm, Lead-Free

Documents:

3D Model	Application Specification AS-76060-9999-001 (PDF)
Drawing (PDF)	Packaging Specification PK-70873-0050-001 (PDF)
3D Model (PDF)	Symbol Footprint Data SYM-170415-1618 (PDF)
Product Specification PS-76060-999-001 (PDF)	RoHS Certificate of Compliance (PDF)
Application Specification AS-76060-990-001 (PDF)	

Agency Certification

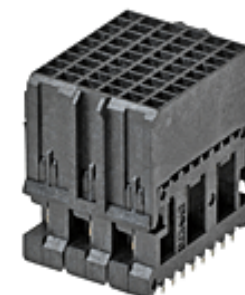
UL E29179

General

Product Family	Backplane Connectors
Series	170415
Application	Mezzanine
Application Tooling Documents	TM-622018799
Component Type	PCB Receptacle
Electrical Model	Yes
Overview	Impact Backplane Connector and Cable Assembly System
Product Name	Impact
UPC	884982623804

Physical

Circuits (Loaded)	54
Circuits (maximum)	54
Color - Resin	Black
Durability (mating cycles max)	200
First Mate / Last Break	No
Flammability	94V-0
Guide to Mating Part	No
Keying to Mating Part	None
Material - Metal	High Performance Alloy (HPA)
Material - Plating Mating	Gold
Material - Plating Termination	Tin
Material - Resin	High Temperature Thermoplastic
Net Weight	10.750/g
Number of Columns	6
Number of Pairs	3
Number of Rows	9
Orientation	Vertical
PC Tail Length	1.20mm
PCB Locator	No
PCB Retention	None
PCB Thickness - Recommended	1.00mm
Packaging Type	Tray
Pitch - Mating Interface	1.90mm
Pitch - Termination Interface	1.90mm
Plating min - Mating	0.762µm
Polarized to PCB	No
Stackable	Yes
Temperature Range - Operating	-55° to +85°C



Series image - Reference only

EU ELV

Not Relevant

EU RoHS

Compliant

REACH SVHC

Not Contained Per -
D(2020)4578-DC (25
June 2020)

Halogen-Free

Status

Low-Halogen

For more information, please visit [Contact US](#)

China ROHS

ELV

RoHS Phthalates

China RoHS

Green Image

Not Relevant

Not Contained

Search Parts in this Series

[170415](#) Series

Mates With

[76165](#) Impact 100 Ohm Backplane Header

Application Tooling | FAQ

Tooling specifications and manuals are found by selecting the products below. Crimp Height Specifications are then contained in the Application Tooling Specification document.

Global

Description

Product #

Press-In Tool for Impact Signal Module Assembly	622018859
---	---------------------------

Termination Interface: Style Through Hole - Compliant Pin

Electrical

Current - Maximum per Contact 0.75A
Data Rate 25.0 Gbps
Impedance 100Ω
Shield Type N/A
Shielded No
Voltage - Maximum 30V AC (RMS)/DC

Solder Process Data

Lead-freeProcess Capability N/A

Material Info

Reference - Drawing Numbers

Application Specification AS-76060-990-001, AS-76060-9999-001
Electrical Model Document EE-170415-029, EE-170415-181
Packaging Specification PK-70873-0050-001
Product Specification PS-76060-999-001
S-Parameter Model SP-170415-029, SP-170415-181, SP-170415-221
Sales Drawing SD-170415-001
Symbol/Footprint Data SYM-170415-1618

This document was generated on 07/27/2020

PLEASE CHECK WWW.MOLEX.COM FOR LATEST PART INFORMATION