

WCGW indexable insert ULTRAPOWER PKD positive

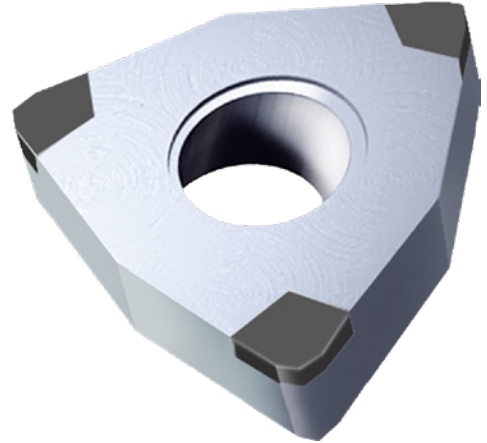
ATORN[®]

Application

For longitudinal turning and facing in the material groups of non-ferrous metals, special alloys, ceramics and hard metals.

Version

- Lasered ULTRAPOWER PFD indexable insert



Art. no.	17871 508
Shape of indexable insert ISO	W
Clearance angle of indexable insert ISO	C
Tolerance class of indexable insert ISO	G
Indexable insert type ISO	W
Size of indexable insert ISO	02
Thickness of indexable insert ISO	01
Corner radius of indexable insert ISO	04
ISO name	WCGW 020 104
Cutting material	Ultra PCD
Type of cutting material	APC,neutral
ISO-Code Rotating	WCGW 020 104
Design of the chamfer	A (sharp)

EAN-Code

4050293568295