

Collet chucks type ER metal-sealed, according to DIN 6499 A/ISO 15488

Can be used up to 120 bar, concentricity < 2 µm

ATORN[®]

Application

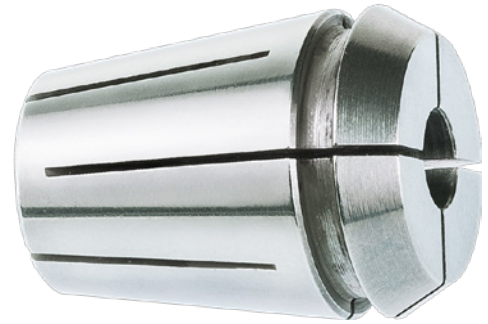
For use on precision collet chucks

Version

- Metal sealed up to 120 bar for internal coolant supply

Advantage

- Higher degree of concentricity extends service life of tool



Art. No.	23388 878
Collet type	ER 20
Clamping diameter	13.5 mm
Outer diameter	21 mm
Length	31.5 mm

EAN-Code

4050293679717