

Linear encoders without bearings incremental

System for linear motion feedback

Sensor head with magnetic tape

MIL10



MIL10

Features

- Sensor head with magnetic tape
- Robust magnetic sensing method
- Output signals A 90° B with index signal
- Output circuits: HTL/push-pull and TTL/RS422
- Resolution up to 5 µm (4-times evaluation)
- Non-contact, wear-free sensing system
- High resistance to dirt and vibrations

Technical data - electrical ratings

Short-circuit proof	Yes
Initializing time	≤50 ms after power on (see general informations)
Resolution	5 µm (4-times evaluation) 10 µm (4-times evaluation) 25 µm (4-times evaluation)
Interpolation	20-fold, 50-fold, 100-fold
Output signals	A+, B+, R+, A-, B-, R-
Reference signal	Index signal, width 90°
Output frequency	≤350 kHz
System accuracy	±(0.02 mm + 0.04 mm x magnetic tape length (m))
Duty cycle	40...60 %
Sensing method	Magnetic
Output stages	HTL/push-pull TTL/RS422
Interference immunity	DIN EN 61000-6-2
Emitted interference	DIN EN 61000-6-4
Approvals	CE, UL

Technical data - electrical ratings (HTL)

Voltage supply	10...30 VDC
Reverse polarity protection	Yes
Consumption typ.	20 mA (w/o load)

Technical data - electrical ratings (TTL)

Voltage supply	5 VDC ±5 %
Consumption typ.	30 mA (w/o load)
Recommended cable termination	On control side each channel pair 120 Ohm

Technical data - mechanical design

Dimensions (sensor head)	10 x 15 x 45.5 mm
Protection DIN EN 60529	IP 66, IP 67
Movement speed	<5 m/s (resolution 5 µm) <10 m/s (resolution 10 µm) <25 m/s (resolution 25 µm)
Working distance	0.1...0.6 mm
Material	Housing: zinc diecast, plated
Operating temperature	-40...+85 °C
Relative humidity	EN 60068-2-78:2010 EN 60068-2-30:2005 93 % condensation permitted
Resistance	DIN EN 60068-2-6 Vibration 30 g, 10-2000 Hz DIN EN 60068-2-27 Shock 500 g, 6 ms
Weight approx.	130 g
Connection	Cable 2 m Cable 0.3 m with connector M12

Linear encoders without bearings incremental

System for linear motion feedback

Sensor head with magnetic tape

MIL10

Part number

MIL10-S2. . P.A

Resolution

0005	5 μ m (4-times evaluation)
0010	10 μ m (4-times evaluation)
0025	25 μ m (4-times evaluation)

Voltage supply / output stages

E	4.75...5.25 VDC / TTL/RS422, 6 channel
N	10...30 VDC / HTL/push-pull, 6 channel

Connection

- L Cable 2 m
- C Cable 0.3 m with connector M12, 8-pin, pin terminals, CCW

Linear encoders without bearings incremental

System for linear motion feedback

Sensor head with magnetic tape

MIL10

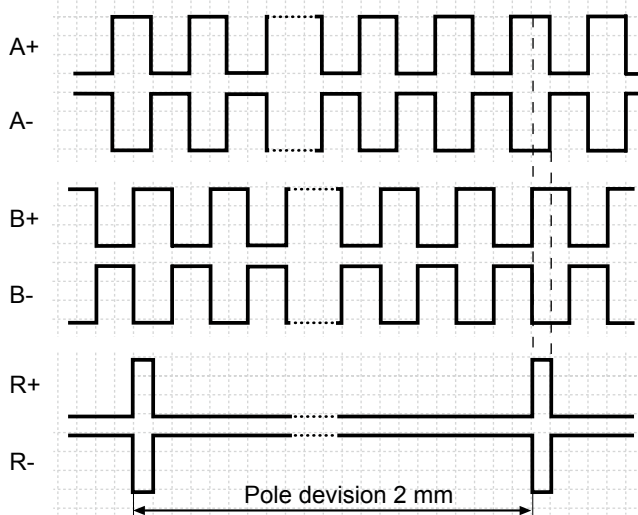
Accessories

Connectors and cables

10146775	Female connector M12, 8-pin, straight, without cable
11170528	Female connector M12, 8-pin, straight, shielded, 5 m cable (ESG 34FH0500GVS)
11177375	Female connector M12, 8-pin, straight, shielded, 10 m cable (ESG 34FH1000GVS)
11091511	Female connector M12, 8-pin, straight, shielded, 20 m cable

Output signals

Signal A leads to signal B by 90° in the moving direction shown below.



Trigger level

Outputs	HTL/push-pull
Output level High	>+Vs -2.2 V
Output level Low	<0.7 V
Load	≤20 mA

Outputs	TTL/RS422
Output level High	>2.4 V
Output level Low	<0.7 V
Load	≤20 mA

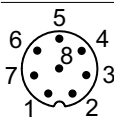
General information

The initializing time of the sensor is 50 ms. Output signals may not be processed during this time.

Terminal assignment

Cable or cable 0.3 m with connector M12

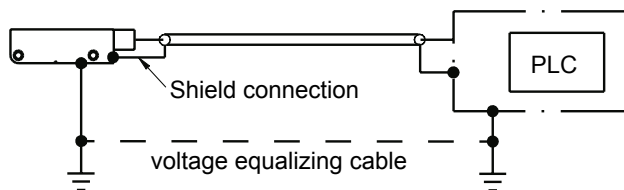
Connector	Core colour	Signals
Pin 1	white	0 V
Pin 2	brown	+Vs
Pin 3	green	A+
Pin 4	yellow	A-
Pin 5	grey	B+
Pin 6	pink	B-
Pin 7	blue	R+ (zero pulse)
Pin 8	red	R- (zero pulse inv.)



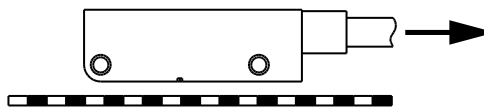
Cable screen: connected to sensor housing or connector M12 and sensor housing.

Cable data: PUR 4 x 2 x 0.14 mm², shielded
 Bending radius: >50 mm (fix) / >100 mm (cable chain)
 Outer diameter: 6.3 mm

Recommended grounding concept



Rotational or linear direction



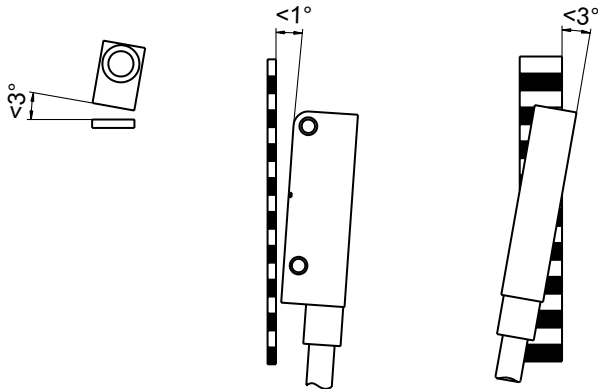
Linear encoders without bearings incremental

System for linear motion feedback

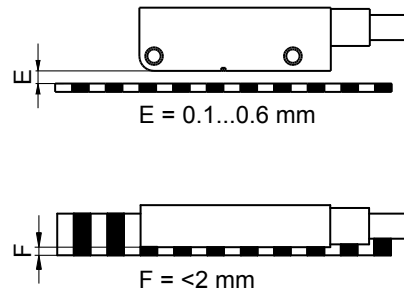
Sensor head with magnetic tape

MIL10

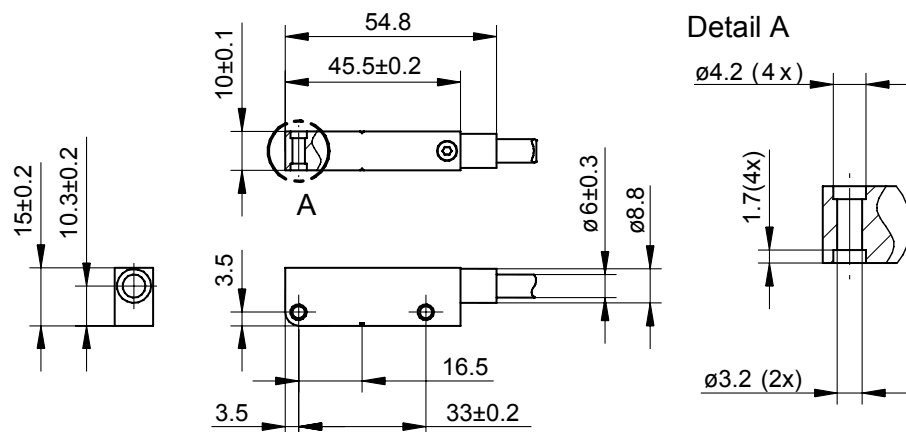
Angular misalignment



Working distance



Dimensions



Linear encoders without bearings incremental

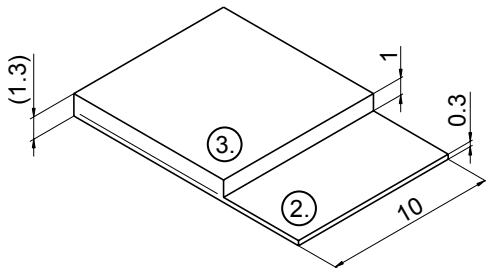
System for linear motion feedback

Sensor head with magnetic tape

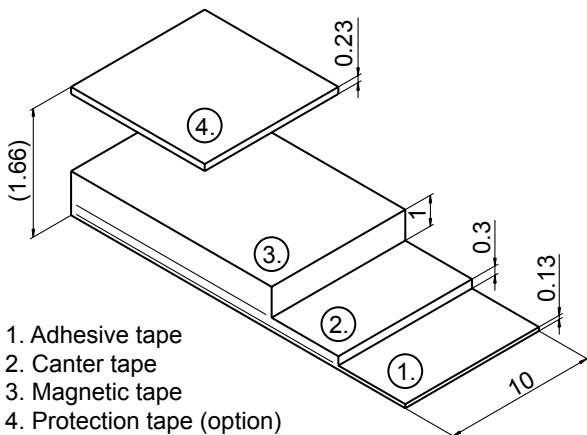
MIL10

Magnetic tapes

Layers – magnetic tape



Layers – magnetic tape self-adhesive



1. Adhesive tape
2. Canter tape
3. Magnetic tape
4. Protection tape (option)

Technical data - magnetic tape

Measuring range	<50 mm
Pole length	2 mm
Precision class	±40 μ (further upon request)
Tape width	10 mm
Material	Elastomer bounded tape on an stainless steel support
Mounting	Self-adhesive or self-mounting
Bending radius	Min. 75 mm

Part number

10128662	MIL10-M402.00050.P10NN Magnetic tape 50 mm
10128663	MIL10-M402.00150.P10NN Magnetic tape 150 mm
10128664	MIL10-M402.00300.P10NN Magnetic tape 300 mm
11177271	MIL10-M402.00500.P10NN Magnetic tape 500 mm
11181983	MIL10-M402.01000.P10NN Magnetic tape 1 m
11177272	MIL10-M402.05000.P10NN Magnetic tape 5 m
11177273	MIL10-M402.10000.P10NN Magnetic tape 10 m
11177274	MIL10-M402.25000.P10NN Magnetic tape roll 25 m
11177276	MIL10-M402.00050.P10TN Magnetic tape 50 mm, self-adhesive
11173414	MIL10-M402.00150.P10TN Magnetic tape 150 mm, self-adhesive
11177277	MIL10-M402.00300.P10TN Magnetic tape 300 mm, self-adhesive
11177278	MIL10-M402.00500.P10TN Magnetic tape 500 mm, self-adhesive
11177279	MIL10-M402.01000.P10TN Magnetic tape 1 m, self-adhesive
11177290	MIL10-M402.05000.P10TN Magnetic tape 5 m, self-adhesive
11177291	MIL10-M402.10000.P10TN Magnetic tape 10 m, self-adhesive
11177292	MIL10-M402.25000.P10TN Magnetic tape roll 25 m, self-adhesive

Tolerance: ≤500 mm: ±0.5 mm; 500...1000 mm: ±2 mm
>1000 mm: 0/+50 mm

On request:

Protection tape self-adhesive, stainless steel, 0.3 mm thick