

## 6 x 6mm SMT Tactile Switch



### DESCRIPTION

A range of SMT tactile switches with a variety of actuator heights.

### DISTINCTIVE FEATURES

- Positive switch action.
- Normally open single pole contacts.
- 50mA contact rating
- Four terminal mounting for additional stability.
- 6 x 6mm body size.

### APPLICATIONS

Suitable for general purpose use.

6 x 6  
mm

SPST

SMT

50mA

Mom



## ELECTRICAL SPECIFICATION

Contact Rating	50mA @ 12Vdc
Contact Configuration	SPST (NO)
Action	Off (on)
Insulation Resistance	100MΩ min
Contact Resistance	100MΩ max



## GENERAL SPECIFICATION

Type	Tactile Switch
Operating Life	>100,000 Cycles
Withstand Load	3kg Applied Vertically to the Actuator
Operating Force	130gf
UNSPSC	31922216
Country Of Origin	China



## MATERIALS

Housing	PBT
Button	PBT
Cover	Nickel-plated Brass
Contact	Gold-plated Brass



## TERMINALS

Type	Kinked Pin
------	------------

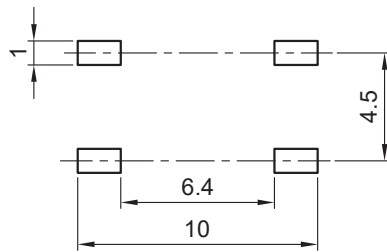
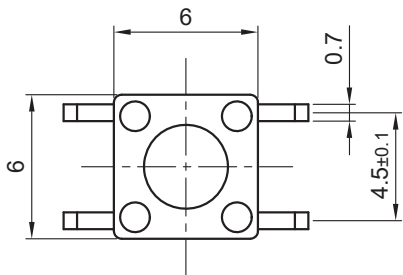


## ENVIRONMENTAL/OPERATING SPECIFICATION

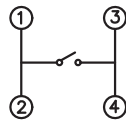
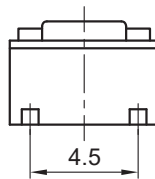
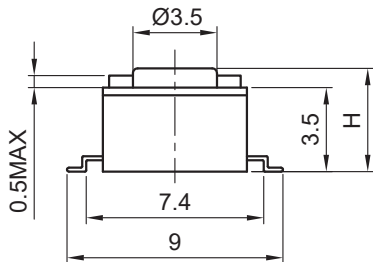
Wave Operating Temp Range	-25°C to +70°C
Wave Soldering	Recommend Solder Temperature 500°F (260°C) Max 5 seconds, Subject to 1.6mm OCB Thickness.
Hand Soldering	Hand Soldering Using Soldering Iron of 30 Watts Controlled at 608°F (320°C) Approximately 2 Seconds.



## DIMENSIONS/DRAWINGS



Recommend PCB layout  
Tolerance:±0.05



Circuit diagram



## OPTIONS (MOQ MAY APPLY)

Body Colour	Brown
Actuator Colour	Brown, Salmon, Red
Operating Force	130, 160, 170, 250, 320
Profile Height	5.3mm, 5.5mm, 6.0mm, 7.3mm, 7.5mm, 7.8mm, 8.0mm, 8.5mm, 9.0mm, 10.0mm, 10.5mm, 11.0mm, 12.0mm, 12.5mm, 15.0mm, 17.0mm.
Packaging	Tape and Reel

For further information on pricing, delivery, and long-term stock agreements please get in touch with your local business development contact, telephone our main office on **01206 838000** or email **Sales@Rapidonline.com**.

# R-TECH

Tried & trusted technology

Important Notice: This data sheet and its contents (the "Information") belong to Rapid Electronics Limited or are licensed to it. No licence is granted for the use of it other than for information purposes in connection with the products to which it relates. No licence of any intellectual property rights is granted. The Information is subject to change without notice and replaces all data sheets previously supplied. The Information supplied is believed to be accurate but Rapid Electronics Limited assumes no responsibility for its accuracy or completeness, any error in or omission from it or for any use made of it. Users of this data sheet should check for themselves the Information and the suitability of the products for their purpose and not make any assumptions based on information included or omitted. Liability for loss or damage resulting from any reliance on the Information or use of it (including liability resulting from negligence or where Rapid Electronics Limited were aware of the possibility of such loss or damage arising) is excluded. This will not operate to limit or restrict Rapid Electronics Limited's liability for death or personal injury resulting from its negligence.



## PART NUMBER TABLE

Part Number	Profile Height (H) (mm)	Operating Force (gf)	Reel Size	Housing Colour	Actuator Colour	EAN Nmber
78-3815	4.3	130	1000	Black	Black	5053556011445
78-3816	5.0	130	1000	Black	Black	5053556011452
78-3817	7.0	130	800	Black	Black	5053556011469
78-3818	9.5	130	600	Black	Black	5053556011476
78-3819	4.3	160	1000	Black	Black	5053556011483
78-3821	5.0	160	1000	Black	Black	5053556011490
78-3823	7.0	160	800	Black	Black	5053556011506
78-3825	9.5	160	600	Black	Black	5053556011513
78-3827	4.3	250	1000	Black	Black	5053556011520
78-3828	5.0	250	1000	Black	Black	5053556011537
78-3829	7.0	250	800	Black	Black	5053556011544
78-3831	9.5	250	600	Black	Black	5053556011551

For further information on pricing, delivery, and long-term stock agreements please get in touch with your local business development contact, telephone our main office on **01206 838000** or email **Sales@Rapidonline.com**.



Tried & trusted technology

Important Notice: This data sheet and its contents (the "Information") belong to Rapid Electronics Limited or are licensed to it. No licence is granted for the use of it other than for information purposes in connection with the products to which it relates. No licence of any intellectual property rights is granted. The Information is subject to change without notice and replaces all data sheets previously supplied. The Information supplied is believed to be accurate but Rapid Electronics Limited assumes no responsibility for its accuracy or completeness, any error in or omission from it or for any use made of it. Users of this data sheet should check for themselves the Information and the suitability of the products for their purpose and not make any assumptions based on information included or omitted. Liability for loss or damage resulting from any reliance on the Information or use of it (including liability resulting from negligence or where Rapid Electronics Limited were aware of the possibility of such loss or damage arising) is excluded. This will not operate to limit or restrict Rapid Electronics Limited's liability for death or personal injury resulting from its negligence.