



**RN487x PICtail / PICtail Plus Board  
(RN-4870-SNSR)  
(RN-4871-PICTAIL)  
User's Guide**

# RN487x PICtail / PICtail Plus Board

---

## Contents

<b>1. Overview .....</b>	<b>4</b>
1.1. RN4870 PICtail Board Description .....	4
1.2. Features.....	5
<b>2. Interface Description.....</b>	<b>6</b>
2.1. RN4870 PICtail Board Description .....	6
2.2. RN4871 PICtail Board Description .....	7
2.3. Sensor Board Description.....	8
<b>3. RN487x Quick Start Guide .....</b>	<b>10</b>
3.1. Connecting RN4870 to Host PC.....	10
3.2. Changing Settings Using Commands .....	11
3.3. Connecting to RN487x using SmartDiscover APP .....	13
3.4. Creating Custom GATT Services .....	14
3.5. Accessing GATT Service using UART Commands and SmartDiscover .....	16
3.6. Reading Sensor Board Peripheral IO Ports Using UART Commands.....	17
<b>4. Using the RN4870 Sensor Board.....</b>	<b>20</b>
4.1. Configuring the RN4870 Module Settings .....	20
4.2. Sensor Board GATT Service .....	21
4.3. Transferring Sensor Data into GATT Service using Scripting .....	23
4.4. BLESensorAPP SmartPhone APP .....	25
4.5. RN4870 Sensor Board Configuration Utility .....	27
<b>5. PIC Configuration Library .....</b>	<b>28</b>
5.1. Using BM7x Configuration Library with RN487x PICtail.....	28
<b>6. Appendix A: Updating RN4870/71 PICTail Firmware .....</b>	<b>31</b>
<b>7. Appendix B: Schematics and BOM.....</b>	<b>32</b>
7.1. RN4870 PICTail Schematic .....	32
7.2. RN4870 PICTail BOM.....	34
7.3. RN4870 Sensor Board Schematic.....	36
7.4. RN4870 Sensor Board BOM .....	36
<b>8. Appendix C: Bluetooth Low Energy Primer .....</b>	<b>38</b>

# RN487x PICtail / PICtail Plus Board

---

8.1. GAP Roles: Peripheral and Central.....	38
8.2. GATT Service: Client and Server .....	38
<b>9. Appendix D: Sensor Board Configuration Command Text.....</b>	<b>41</b>
9.1. RN4870 Module Settings.....	41
9.2. RN4870 Sensor Board GATT Service .....	41
9.3. Sensor Board Script .....	42

# RN487x PICtail / PICtail Plus Board

---

## 1. Overview

This document describes the hardware and software for the RN4870 PICtail/PICtail Plus board, part number RN-4870-SNSR.

The RN4870 PICtail/PICtail Plus board allows the designer to evaluate and demonstrate the capabilities of the RN4870 Bluetooth 4.2 RF Module. The RN4870 PICtail key features include an integrated configuration and programming interface, LED and push button bank for prototype user inputs, MCP2200 USB to UART Bridge for plug-and-play connectivity to host. An additional daughter board is also included to demonstrate peripheral access using Bluetooth Low Energy.

In addition to RN4870 PICtail board hardware, several SmartPhone applications are provided to demonstrate Bluetooth data connections to the onboard RN4870 module.

The demonstration APPs as follow and available on Apple APPSTORE™ and Google PlayStore™:

- SmartDiscover
- SmartData
- BLESensorAPP

For detail explanation s of the RN487x command and specifications, please download the RN487x Data Sheet and User Guide documents available at [www.microchip.com/RN4870](http://www.microchip.com/RN4870).

### 1.1. RN4870 PICtail Board Description

RN4870 PICtail board provides rapid prototyping and developing for Bluetooth data applications for Bluetooth Low Energy. It can be powered via USB host or through the Microchip PICtail Plus interface. The RN4870 PICtail board utilizes the RN4870 module, a fully certified Bluetooth 4.2 Low Energy module supporting. The RN4870 PICtail board provides a USB-UART converter allowing flexible interface to host PC, a PC terminal utility and SmartPhone APPs to drive both BTLE serial data connections and custom BLE services. The RN4870 PICtail board also provides Microchip PICtail Plus and PICtail interfaces to be able to interface with the Microchip PIC microcontrollers (MCU) using standard Microchip development tools.

# RN487x PICtail / PICtail Plus Board

---

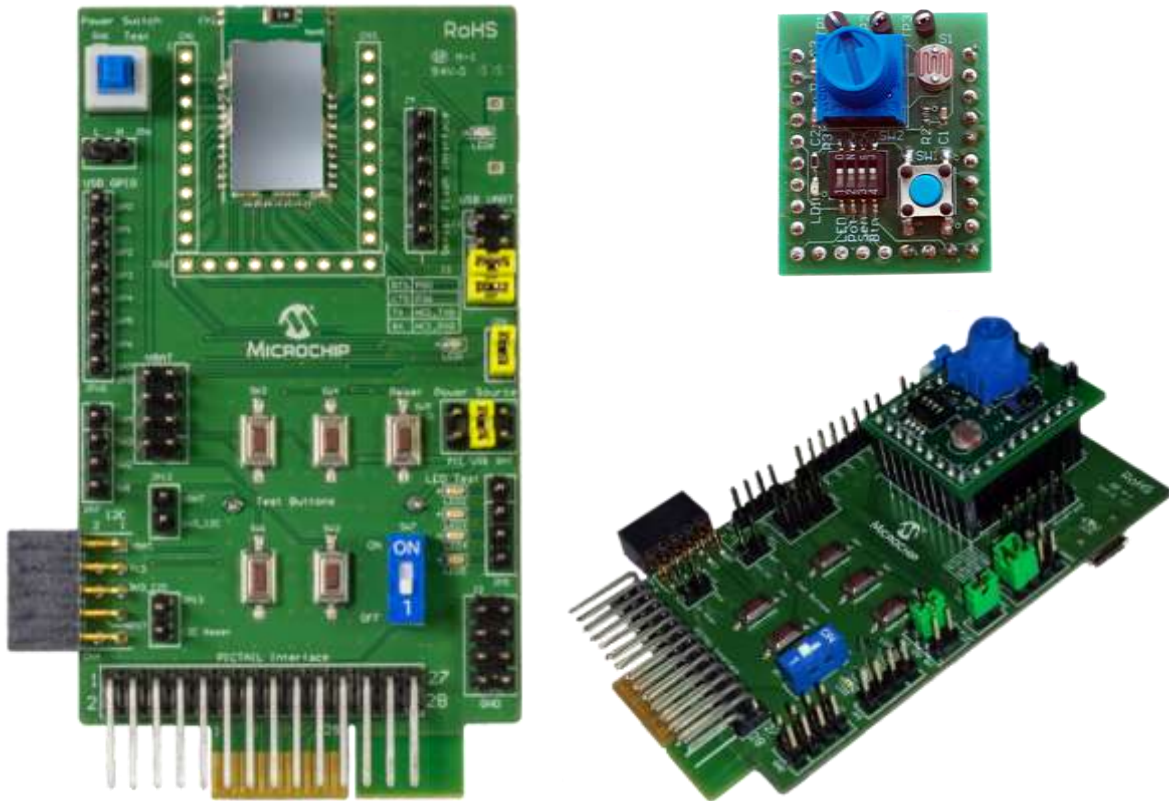


Figure 1: RN4870-SNSR (includes PICtail and Sensor Board)

## 1.2. Features

- RN4870 fully certified Bluetooth Low Energy 4.2 RF Module.
- +2dBm Maximum.
- Transparent UART (serial data over GATT) connection over Bluetooth Low Energy transparent serial data service.
- Onboard dip switch block to set operating modes
- PICtail Plus and PICtail interfaces to fully access RN4870 pins using external PIC MCU
- Embedded MCP2200 USB-UART converter to enable application mode and programming interface to update firmware and configuration settings

# RN487x PICtail / PICtail Plus Board

## 2. Interface Description

### 2.1. RN4870 PICtail Board Description

The PICtail interfaces are listed in figure 2 below. The PICtail can be used in standalone mode powering it from external USB host, coin-cell battery, or from PIC Explorer development board.

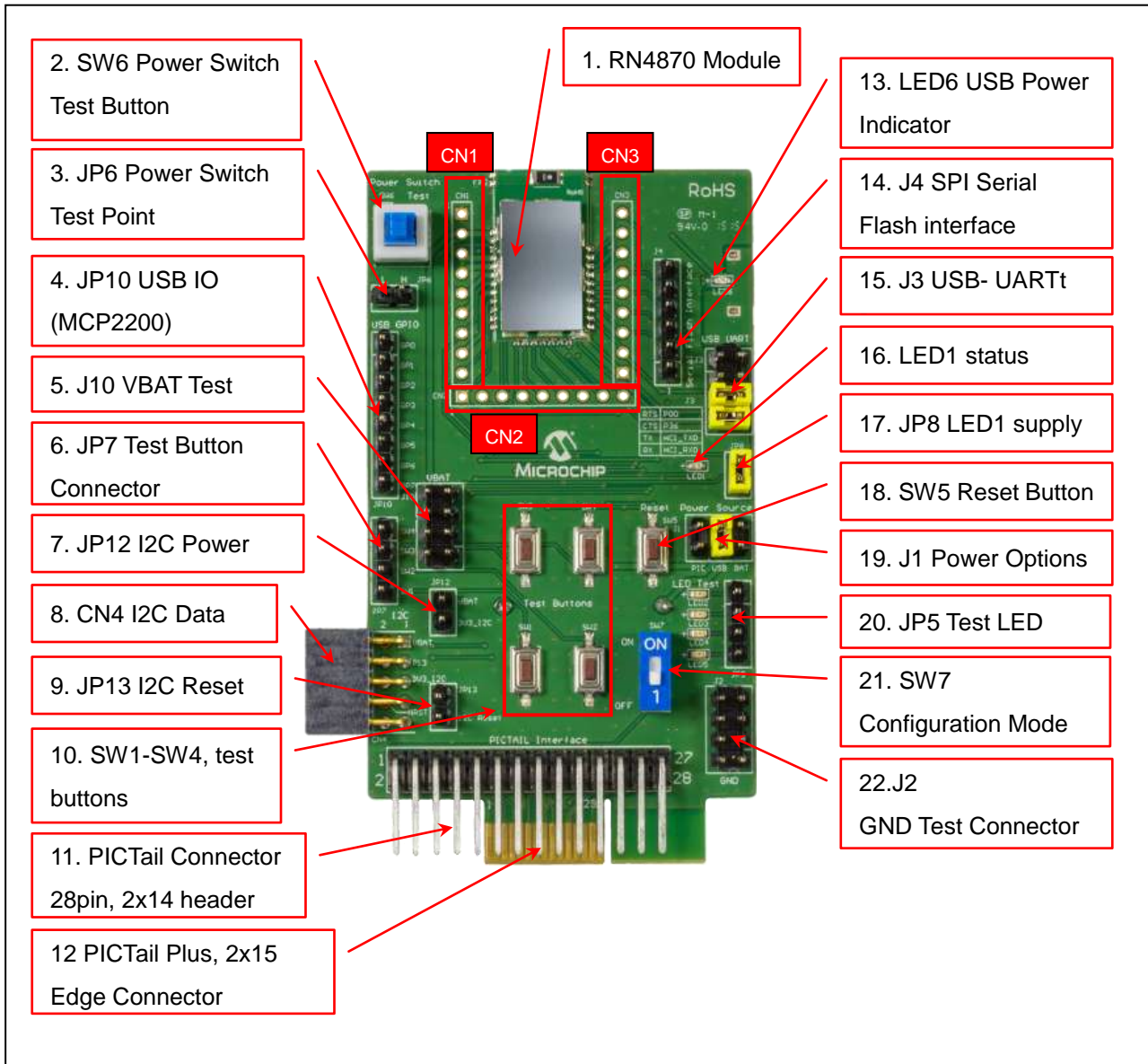


Figure 2 – RN4870 PICtail Interfaces

### Interface Description

1. RN4870 Module
2. SW6 Power Switch used to wake module from deep sleep
3. JP6 Power test point (need use case)
4. JP10 Interface to MCP2200 USB/UART bridge

# RN487x PICtail / PICtail Plus Board

---

5. J10 VBAT supply and test point
6. JP7 Test Button interface to SW1-SW4
7. JP12 Power to I2C bus (I2C features depends on firmware revision)
8. CN4 connector to I2C bus on RN4870 (I2C features depends on firmware revision)
9. JP13 I2C reset (I2C features depends on firmware revision)
10. SW1-SW4 test buttons
11. PICtail Interface (2x14 right angle header pin) for PIC18 Explorer Board
12. PICtail Pus Interface (edge connector) for PIC16 Explorer Board
13. LED6 external power from USB host
14. J4 SPI Serial Flash Interface
15. J3 UART connections. RTS/CTS jumpers must be closed when hardware flow control is enable in module.
16. LED1 status indicator. See RN4870 data sheet for blink rate descriptions
17. LED1 power jumper; disconnects LED from RN4870 if external MCU is monitoring this pin
18. SW5 – Hardware reset line to RN4870
19. J1 Power options for PICTail; PIC explorer board, USB host, Battery (coincell CR2032) on back of board
20. JP5 Connections to test LED 1-4. This can be connected PIO lines or external MCU
21. SW7 operating mode (1 – application mode runtime, ON – programming or configuration to update firmware or configuration settings)
22. J2 Ground Test Connector

CN1, CN2, CN3 header pins to RN4870 module pins. The headers are used to connect Sensor Board to PICtail board or as test points.

## 2.2. RN4871 PICtail Board Description

As shown in figure 3 below, the RN4871 PICtail uses the compact version of the RN487x BLE module. Due to its smaller footprint, the RN4871 has less IO pins than the full size RN4870 module. Consult the RN487x for the specific pin outs of RN4870 and RN4871. Even though the size of the module different, the command interface for both modules is very similar. The user guide describes the difference when accessing RN4870 and RN4871 command pins.

# RN487x PICtail / PICtail Plus Board

---



Figure 3: RN4871 PICtail

## 2.3. Sensor Board Description

The RN4870 PICtail (p/n RN-4870-SNSR) is provided with Sensor Board to demonstrate the peripheral IO capabilities. The Sensor Board interfaces are illustrated in figure 4 below. The Sensor Board is an accessory designed for RN4870 PICtail to demonstrate digital and analog IO capabilities over Bluetooth Low Energy connections. In order to use the Sensor Board with RN4870, it must be configured as described in section 4.0.



# RN487x PICtail / PICtail Plus Board

---

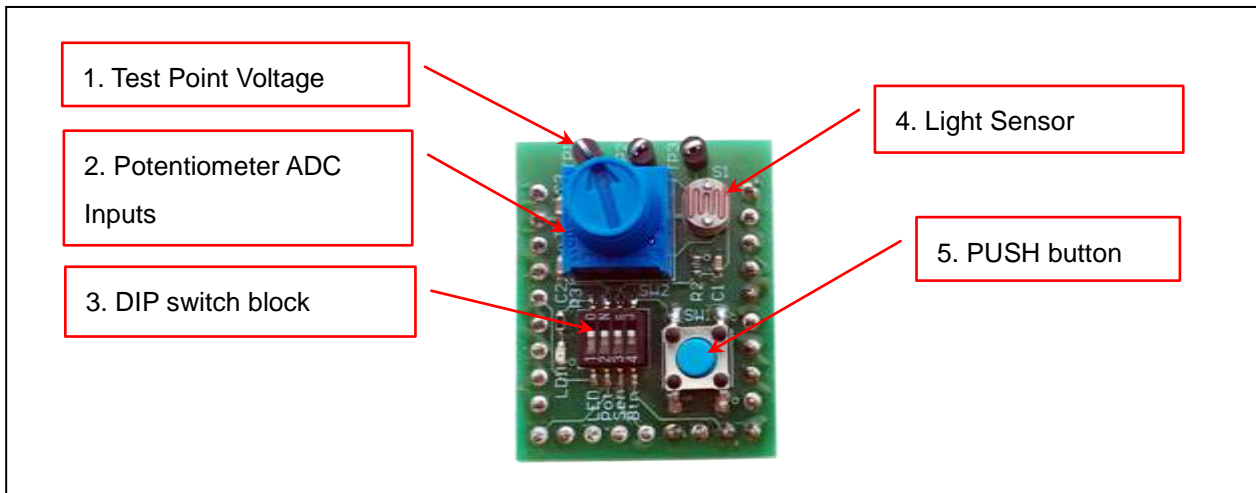


Figure 4: Sensor Board Interfaces

## Interface Descriptions

1. Test Point for ADC channels
2. Variable Resistor to drive ADC0 input
3. DIP Switch block to connect or disconnect sensors from RN4870
4. Light Sensor to drive ADC1
5. Push Button for PIO2

# RN487x PICtail / PICtail Plus Board

---

## 3. RN487x Quick Start Guide

The simplest method to access the RN4870 adn is to connect it to a PC host that supports USB CDC virtual COM (serial) ports. By using a terminal emulator application, simple ASCII commands can be sent to the RN487x module. Interacting directly with the RN4870

Software Needed

- PC Host supporting USB CDC virtual serial port.
  - RN487x PICtail uses MCP2200 USB/UART Bridge. The drivers can be downloaded from [www.microchip.com/MCP2200](http://www.microchip.com/MCP2200).
- Terminal Emulator application
  - TeraTerm or CoolTerm is recommended.
- Microchip SmartDiscover APP for iOS or Android
  - Available on AppStore (iOS) or Google PlayStore (Android)
- RN-4870-SNSR Support Package (RN4870-Sensor-Board-Support.zip)
  - This is a collection of files and utilities to assist in configuring the sensor board. It can be downloaded from [www.microchip.com/RN4870](http://www.microchip.com/RN4870) product page.

### 3.1. Connecting RN4870 to Host PC

To connect the RN4870 PICtail perform the following:

1. Ensure that the RN4870 PICtail is configured as follows
  - a. Close middle jumper on J1 to select USB power option
  - b. SW 7 to “1” position for application runtime mode
  - c. JP11 Tx and Rx jumpers closed position. Note if hardware flow control is enabled then RTS and CTS jumpers must be installed.
2. Connect RN4870 to PC Host using micro USB cable.
  - a. Verify the virtual COM port is enumerated on host PC. If the COM port does not enumerate, the MCP2200 drivers may be missing from the host PC. If needed, the drivers can be downloaded from the [www.microchip.com/MCP2200](http://www.microchip.com/MCP2200) web page.
  - b. Verify LED2 (blue) should be on indicating USB power
  - c. Press reset button SW5 and verify LED1 is flashing slowly
3. Start the Terminal Emulator software. In this example, TeraTerm will be used.
  - a. Configure the serial port settings using the enumerated COM to the following settings:

# RN487x PICtail / PICtail Plus Board

---



FIG 4: COM port settings for Terminal Emulator

4. Enter Command mode by sending the command escape sequence '\$\$\$'. Pressing the '\$' three times will display put RN4870 in command mode and display a "CMD>" prompt.
  - a. When interacting directly with RN4870 using terminal emulator, it is useful to enable local echo feature on the RN4870. Enter the '+' character on the command prompt. As shown below, the "ECHO ON" response is displayed. Any character sent to RN4870 will be echoed back to sender to improve interactivity.

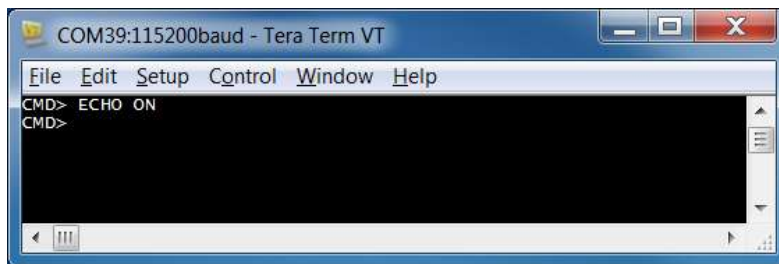


Fig 5: Command Prompt and ECHO ON response

5. Display the basic configuration settings press the "d" followed by [Enter] key (\r). As shown below figure figure 6, the configuration settings may be changed. Refer to the RN487x User Guide for detailed explanation of the commands.

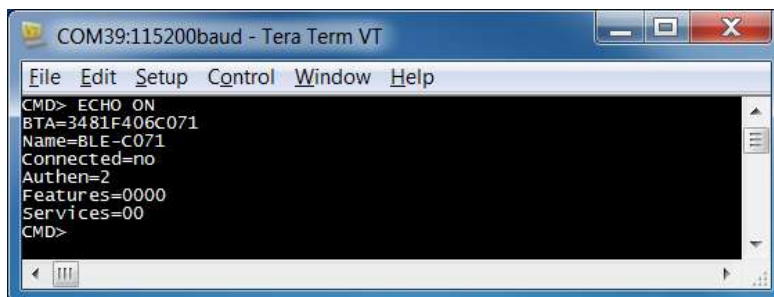


Fig 6: Results of "D" to display basic configuration

## 3.2. Changing Settings Using Commands

The RN4870 PICtail is shipped with a default configuration which does not include any GATT services, as noted by the results of the previous "d" (display basic configuration). The services

# RN487x PICtail / PICtail Plus Board

---

value is set to “Services=00”. RN4870 can be discovered by a SmartDiscover APP. The SmartDiscover APP is available for iOS devices on Apple APPStore™. Check the Google PlayStore for Android version. To enable built-in services and connect to the RN4870, follow the steps below.

1. Connect the RN4870 PICtail to Host PC USB port
  - a. Using Terminal Emulator, open the COM port to RN4870
  - b. Type the command mode sequence “\$\$\$” to enter command
  - c. Enter “+” for turn on ECHO. Refer to Figure 5.
2. To change the default name enable and enable GATT services, (Device Information Service and Transparent UART), send the following commands.
  - a. “S-,BLE” to create a unique serialized name based on BTA address
  - b. “SS,C0” to enable Device Information Profile and Transparent UART services
  - c. “R,1” to reboot module so that configuration commands take effect

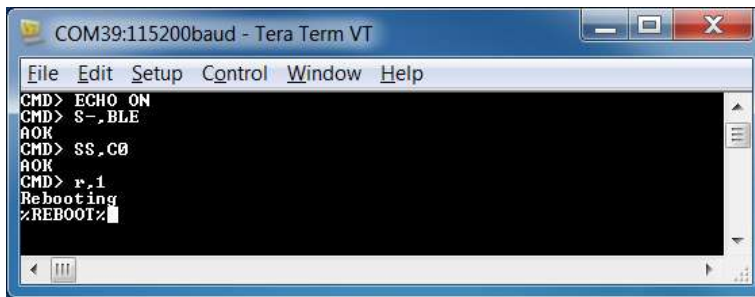


Figure 7: S- and SS command example

3. After any “Sx” set command(s) are issued, the RN4870 needs to be rebooted “R,1” for the changes to take effect. To verify the configuration settings, perform the following:
  - a. Enter command mode by sending “\$\$\$” sequence.
  - b. Enter “+” to turn on local echo for ease of use
  - c. Enter the “d” command to display the setting.
  - d. Note the name of the device “BLE-b1b0” where b1b0 low order bytes of BTA address. In this example the Bluetooth is set to “BLE-C071”
  - e. Verify the services field is set to “C0”

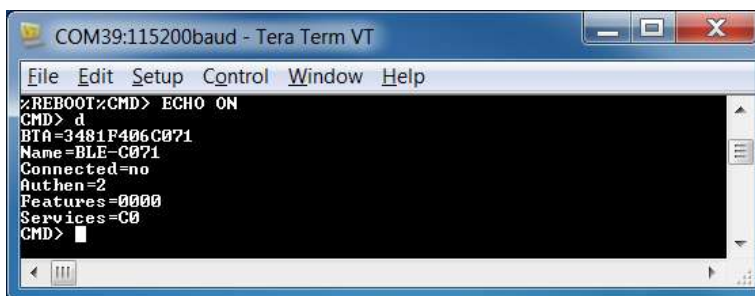


Figure 8: Confirm New Settings in Command mode

# RN487x PICtail / PICtail Plus Board

---

### 3.3. Connecting to RN487x using SmartDiscover APP

The RN487x features can be demonstrated by using the SmartDiscover APP. SmartDiscover is available on iOS™ and Android™ devices, and can be downloaded from APPStore™ and Google PlayStore™. To connect the RN487x using SmartDiscover

1. Using the RN487x PICtail as configured from section 3.2, connect it to host PC and enter command mode using \$\$\$
2. Download and install SmartDiscover APP on the device. See fig 9 below for example of SmartDiscover APP Icon.



Figure 9: Smart Discover

3. Launch the SmartDiscover APP. The following examples will show the SmartDiscover on the iOS device.



Figure 10: SmartDiscover (iOS)

4. As shown in figure 10, verify that the RN487x device name “BLE-b1b0” is displayed. In this example, the device name is BLE-C071.
5. To initiate a connection to the RN487x device, select it from the list.
  - a. Verify the connection is established by if the GATT service view is shown as

# RN487x PICtail / PICtail Plus Board

---

illustrated in figure 11.



Fig 11: GATT Service when Connected

- b. The connection is also verified by “%CONNECT,1,<MAC>” status message returned by the RN487x UART. The <MAC> is the address of the remote BT device that initiated the connection. See the response in the terminal emulator as shown in figure 12.

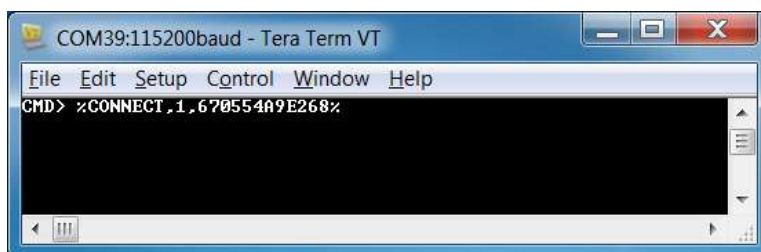


Figure 12: Connected Status Message

### 3.4. Creating Custom GATT Services

The RN487x module supports custom, or private, GATT services. Public GATT services are defined by specifications published by the Bluetooth SIG. Private GATT services are defined by

# RN487x PICtail / PICtail Plus Board

---

the user to host information stored in GATT characteristics. For more information on GATT services, refer to Appendix A in the RN487x User Guide/Command Reference.

To create a private GATT service, enter the configuration commands listed below. The commands can be entered as shown, or copied from configuration files and pasted into the terminal emulator. The cut and paste method saves time and minimize keyboard entry errors. The configuration text files are contained in the RN4870 Sensor Board Support package, which can be downloaded from [www.microchip.com/RN4870](http://www.microchip.com/RN4870).

1. Connect the RN4870 PICtail to Host PC USB port
  - a. Using Terminal Emulator, open the COM port to RN4870
  - b. Type the command mode sequence “\$\$\$” to enter command
  - c. Enter “+” for turn on ECHO.
2. Set Factory Default
  - a. Enter “SF,1” and verify module is reboots after command is entered.
3. Create the private GATT service with three characteristics by entering the commands below.

```
PS,4D6963726F636869702D524E34383730
PC,BF3FBD80063F11E59E690002A5D5C501,02,02
PC,BF3FBD80063F11E59E690002A5D5C502,02,02
PC,BF3FBD80063F11E59E690002A5D5C503,18,04
```

- a. These commands can be entered manually by typing each line followed <ENTER> key from the file “3.4-GATT-service.txt”, or each line can be copied and pasted into terminal emulator.

The PS command creates the GATT service, identified by UUID 16-byte value 4D6963726F636869702D524E34383730.

The PC commands created the characteristics in the service. Each characteristic is identified by the following UUIDs: BF3FBD80063F11E59E690002A5D5C501,

BF3FBD80063F11E59E690002A5D5C502, BF3FBD80063F11E59E690002A5D5C503.

The second parameter is the characteristic property (refer to table 1 in Appendix C), and the third parameter is size of the data value of characteric.

- b. Reboot the module using “R,1” command to ensure the new GATT takes effect.
4. To Verify the GATT Service was configured correctly
    - a. Enter command mode (\$\$\$) after rebooting the module
    - b. Issue the LS command to list the services
    - c. The response should be as illustrated below in fig 13.

# RN487x PICtail / PICtail Plus Board

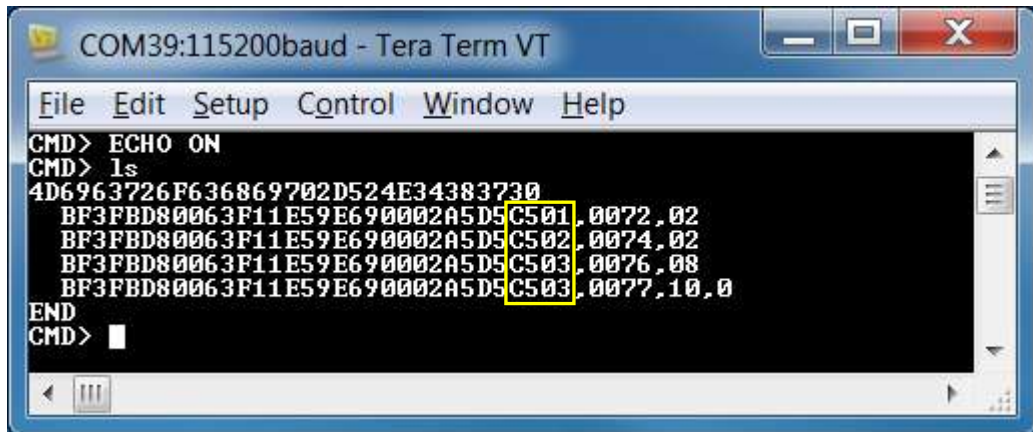


Figure 13: Private Services display from “LS” command

### 3.5. Accessing GATT Service using UART Commands and SmartDiscover

The result of the LS (List Service) command is shown in figure 3.4. A custom GATT service (UUID: 4D6963726F636869702D524E34383730) with three characteristics identified by low order bytes C501, C502, C503 from the 128bit UUID. Each characteristic is assigned a 16-bit handle. Handles are used to efficiently reference and identify characteristics in the GATT service. A 16-bit handle is easier to manage than 128-bit UUID. Note that there are two references for C503 characteristic.

As indicated by the 08 property value (see table 1) in reference 0076 for characteristic C503, this characteristic has the write property enabled. Likewise, reference 0077 has the notification property 10 enabled. This means that to write a value to characteristic C503, reference 0076 is used. To enable client notifications on this characteristic, reference 0077 is used.

The following examples show how to read and write GATT characteristic values by using UART Commands

- a. To write a value to GATT server characteristic, C501, use the server handle write (SHW) and server handle read (SHR) commands with 0072 reference as first parameter, following by hex byte values.

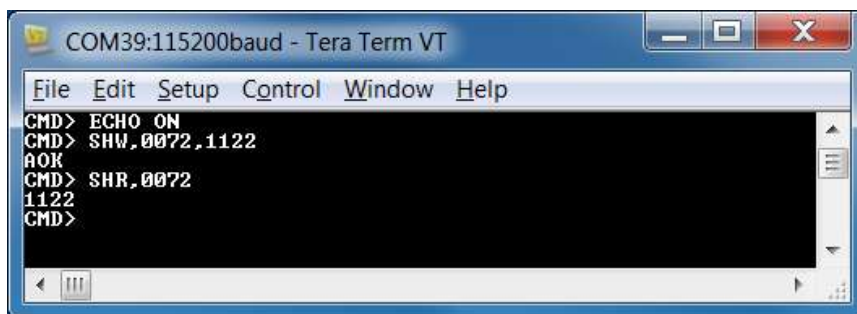


Figure 14: Writing and Reading GATT value by handle reference

- b. It is also possible to access GATT server over a Bluetooth Low Energy Connection using SmartDiscover APP. Launch the SmartDiscover APP and connect to the



# RN487x PICtail / PICtail Plus Board

RN487x board configured with the private GATT from section 3.4. In this example, the device “BLE-C071” is used. Follow the steps in figure 15 below to read the value of GATT characteristic C501. 1). In steps 1 & 2, tap “>” command followed by the “Read” command in step 3. The characteristic value will be read from RN4870 into the Smart Discover APP.

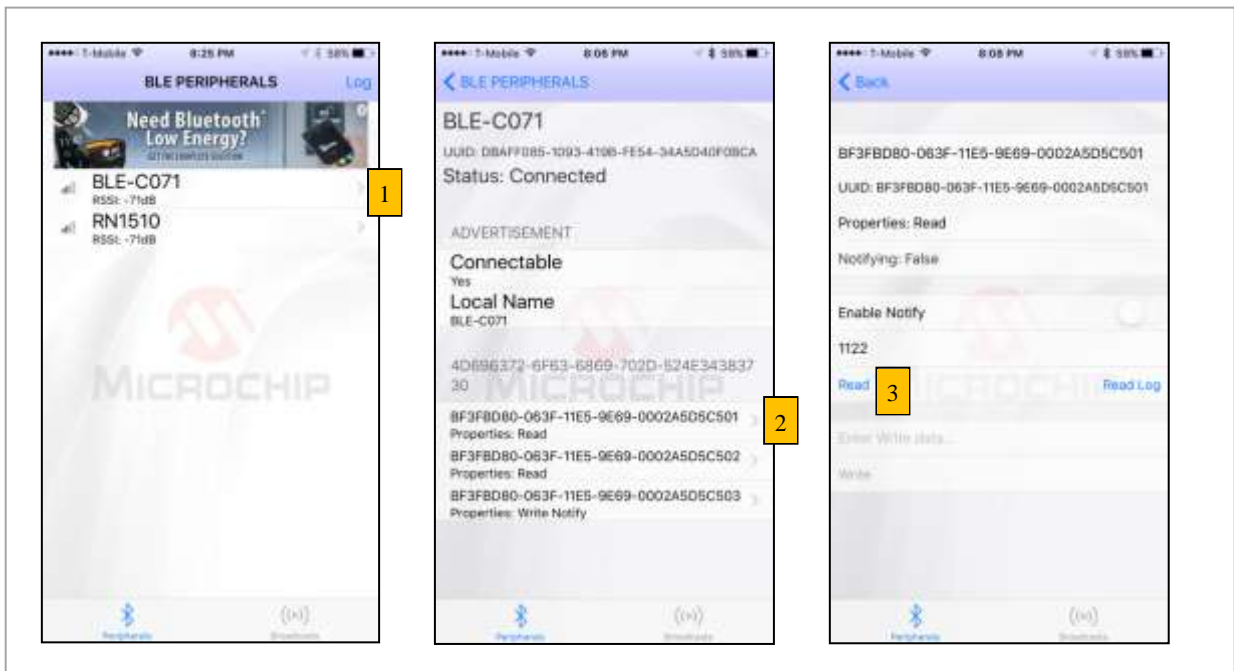


Figure 15: Using SmartDiscover to Read GATT Characteristic Value.

### 3.6. Reading Sensor Board Peripheral IO Ports Using UART Commands

The RN487x module has digital and analog peripheral inputs and outputs. Refer to the data sheet for full description of IO interfaces, and the User Guide sections 2.4.24, 2.6.5-2.6.8 for configuration details. Peripheral IO can be accessed through direct UART commands or over Bluetooth Low Energy connection by associating a GATT characteristic with a peripheral input or output. In this section, accessing peripheral IO on sensor board connected to RN4870 PICtail. UART commands will be used read peripheral IO on sensor board, as illustrated in figure 16.

1. Connect the sensor board to the RN4870 PICtail as shown in figure 1.
2. Set Factory Default to default Peripheral IO functions
  - a. Using Terminal Emulator, open the COM port to RN4870
  - b. Type the command mode sequence “\$\$\$” to enter command
  - c. Enter “SF,1” and verify module is rebooted after command is entered.
3. The following commands set the RN4870 IO pin to configuration illustrated below in figure 16:
  - a. Type the command mode sequence “\$\$\$” to enter command
  - b. Enter “+” to enable local echo

# RN487x PICtail / PICtail Plus Board

- c. Enter “SW,01,00” ADC input port 01 used by light sensor
- d. Enter “SW,02,00” ADC input port 02 used by potentiometer
- e. Enter “SW,03,00” configure digital IO port connected to LED
- f. Enter “SW,04,09” to configure digital IO trigger connected to push button
- g. Enter to “SF,1” to reboot module for these setting to take effect

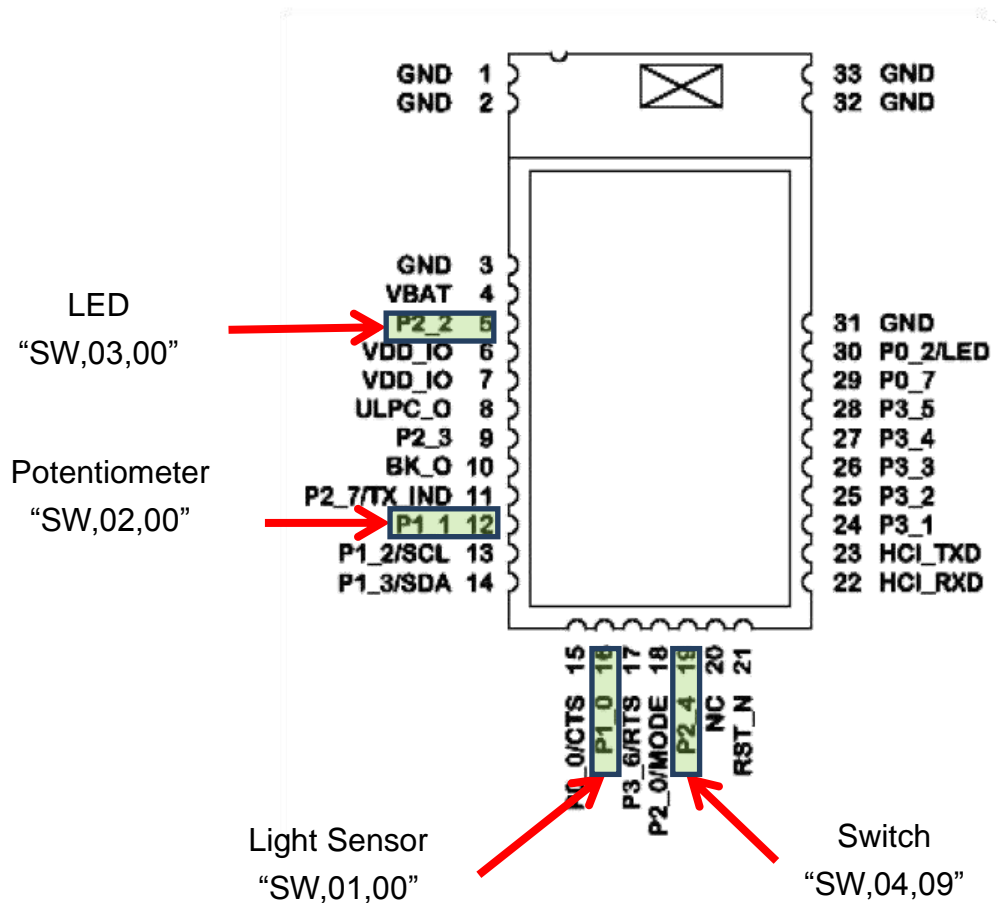


Figure 16: RN4870 Pins used by Sensor Board Interface

4. After the IO ports are configured and module is rebooted from previous SF,1 performed the following commands shown in figure 17 to read and write peripheral IO.

# RN487x PICtail / PICtail Plus Board

---

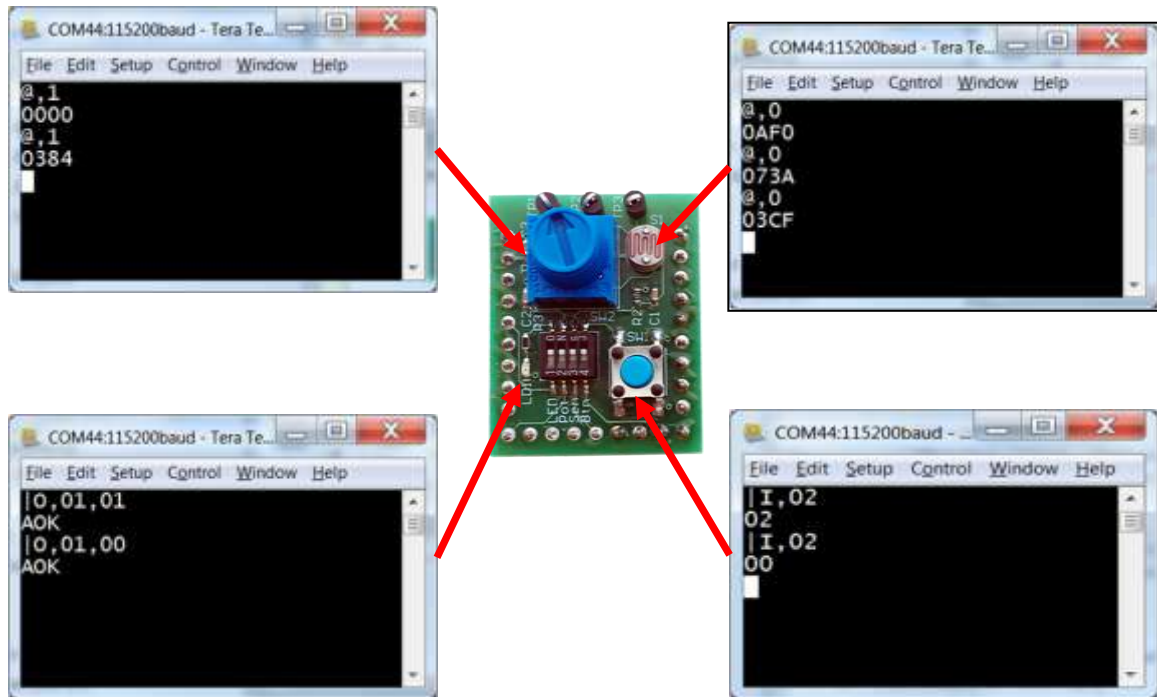


Figure 17: Commands to write and write Sensor Board IO

# RN487x PICtail / PICtail Plus Board

---

## 4. Using the RN4870 Sensor Board

The RN-4870-SNSR sensor board needs to be configured before it can be used as BLE peripheral. The RN4870 is configured as follows to enable the Sensor Board peripheral, and allow the BLESensor App to communicate with the RN4870:

- Peripheral IO port to sensors is configured using SW command
- A GATT (Sensor Board) service must be defined to hold the values from peripherals for read access from a (GATT) client.
- Similarly, when a client writes a value to a GATT characteristic in a peripheral, there must be a method for the peripheral to write the value destined for characteristic into the peripheral port.
- A GATT client on a central (GAP) device is used to access the GATT characteristics in the peripheral, which is an RN4870 with sensor board. The GATT client for the sensor board is an SmartPhone APP call **BLESensorAPP**. Keep in mind that it is possible to use another RN4870 as the client to access the RN4870 sensor board peripherals.

The critical function of associating GATT characteristic with a peripheral is performed by the RN4870 scripting capability.

The RN4870 can be configured manually following the instructions in section 4.1 to 4.4. Alternatively, the RN4870 can also be configured by using the PC Utility (RN4870\_SensorBoard\_Cfg\_Cmd.exe) described in section 4.5. The PC utility sends automates the commands listed in sections 4.1 to 4.4. Go directly to section 4.5 to skip manual configuration if that is desired.

### 4.1. Configuring the RN4870 Module Settings

The sensor board can be configured by entering the following commands below. Alternatively to manually typing, the configuration commands can be located in section 9.1 to 9.3 of this document. Each command can be copied to Clipboard via CTRL-C, and sent into RN4870 via TeraTera ALT-V paste command.

1. Connect the RN4870 PICtail to Host PC USB port
  - a. Using Terminal Emulator, open the COM port to RN4870
  - b. Type the command mode sequence “\$\$\$” to enter command
  - c. Enter “+” for turn on local echo.
  - d. Enter “WP” to pause any running scripts
  - e. Enter “WC” to clear any previous script
  - f. Enter “PZ” to clear any previous user defined GATT service
  - g. Enter “SF,1” to factory default module settings and verify module reboots after

# RN487x PICtail / PICtail Plus Board

---

command is entered.

- h. RE-enter command mode by typing “\$\$\$”
  - i. Enter “+” for turn on local echo.
2. Configure Module Features
- a. Enter “S-,RN4870” to serialize Bluetooth name
  - b. Enter “SS,80” to enable Device Information Profile
  - c. Enter “SR,4040” to enable scripting start on PWR\_ON event and disable command prompt.
  - d. Enter “SW,01,00” to configure ADC input port 01 used by light sensor
  - e. Enter “SW,02,00” to configure ADC input port 02 used by potentiometer
  - f. Enter “SW,03,00” to configure digital IO port connected to LED
  - g. Enter “SW,04,09” to configure digital IO trigger connected to push button
  - h. Enter “R,1” to reboot module
  - i. Re-enter command mode by typing “\$\$\$”
  - j. Enter “+” for turn on local echo
  - k. Enter the “d” display setting as show in Fig 18 below. The GW command is used to return the current IO configuration.

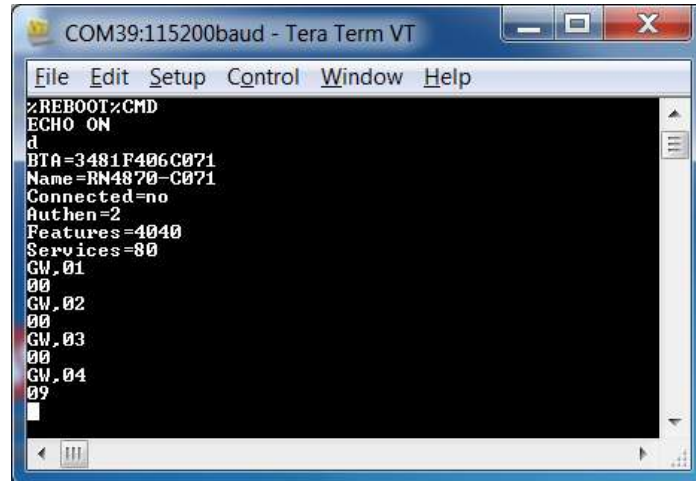


Figure 18: RN4870 Module Settings Configuration

## 4.2. Sensor Board GATT Service

The collected data from RN4870 peripheral IO are stored in the characteristics of a custom GATT service that is accessed by the Sensor Board BLE Client APP. To create the Sensor Board GATT Service, enter the commands below while in command mode.

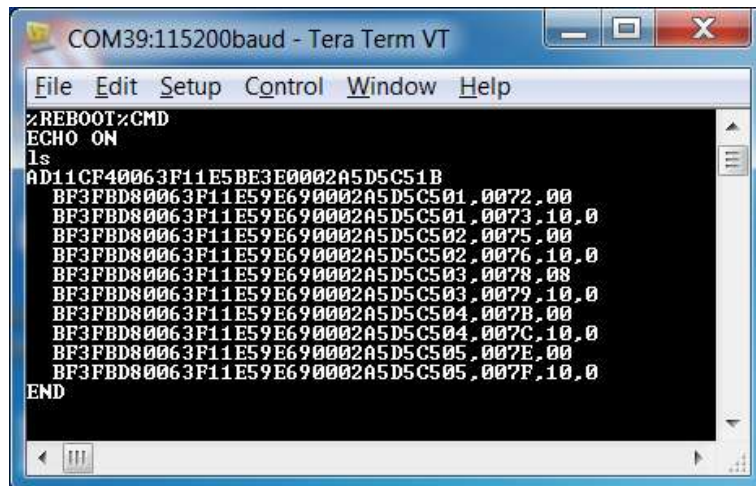
1. Enter “PS,AD11CF40063F11E5BE3E0002A5D5C51B” to create 128-bit UUID to identify the GATT Service.
2. Enter “PC,BF3FBD80063F11E59E690002A5D5C501,10,02” to declare a two byte characteristic with notify property enabled. This characteristic stores the value of

# RN487x PICtail / PICtail Plus Board

---

ADC channel used for light sensor.

3. Enter “PC,BF3FBD80063F11E59E690002A5D5C502,10,02” to declare a two byte characteristic with notify property enabled. This characteristic stores the value of ADC channel used for potentiometer.
4. Enter “PC,BF3FBD80063F11E59E690002A5D5C503,18,14” to declare 20 byte value used to manage both push button state (virtual LED in APP) and the LED blink rate on sensor board. Both notify and write properties are enabled for this characteristic.
5. Enter “PC,BF3FBD80063F11E59E690002A5D5C504,10,02” to declare a two byte characteristic with notify property enabled. This characteristic stores the value of ADC channel used for RN4870 internal temperature sensor.
6. Enter “PC,BF3FBD80063F11E59E690002A5D5C505,10,02” to declare a two byte characteristic with notify property enabled. This characteristic stores the value of ADC channel used for the RN4870 internal battery voltage sensor.
7. Enter “R,1” to reboot RN4870 module
8. Type “\$\$\$” to enter command mode
9. Enter “+” to enable local echo
10. Enter the “LS” (list services) to display Sensor Board GATT Service as shown in figure 19 below:



```
COM39:115200baud - Tera Term VT
File Edit Setup Control Window Help
%REBOOT%CMD
ECHO ON
ls
AD11CF40063F11E5BE3E0002A5D5C51B
BF3FBD80063F11E59E690002A5D5C501,0072,00
BF3FBD80063F11E59E690002A5D5C501,0073,10,0
BF3FBD80063F11E59E690002A5D5C502,0075,00
BF3FBD80063F11E59E690002A5D5C502,0076,10,0
BF3FBD80063F11E59E690002A5D5C503,0078,08
BF3FBD80063F11E59E690002A5D5C503,0079,10,0
BF3FBD80063F11E59E690002A5D5C504,007B,00
BF3FBD80063F11E59E690002A5D5C504,007C,10,0
BF3FBD80063F11E59E690002A5D5C505,007E,00
BF3FBD80063F11E59E690002A5D5C505,007F,10,0
END
```

Figure 19: Sensor Board GATT Service declared in RN4870

As illustrated by the LS command result in figure 19, a custom GATT service has been created in the RN4870 module. Note that each characteristic is assigned a 16-bit handle, where each character has a value in handle and property handle. The characteristic value and properties are access by short, and more efficient 16-bit handle, instead of the 128-bit UUID value. For example, two handles 0072, and 0073 associated with the

# RN487x PICtail / PICtail Plus Board

---

GATT characteristic BF3FBD80063F11E59E690002A5D5C501. A GATT client, such as a SmartPhone APP, uses 0072 is used read/write characteristic values, while 0073 is used to enable/disable the notify property. The next step is to transfer the sensor values from peripheral IO into the GATT characteristics. This is done with RN4870 scripting feature described in the next section.

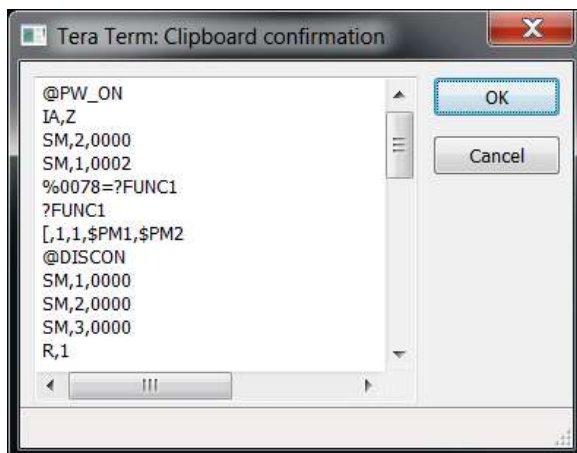
## 4.3. Transferring Sensor Data into GATT Service using Scripting

The Sensor Board GATT service was defined in the previous section. In order to populate the characteristics with data from sensor board peripherals, and conversely, transfer values received from GAP Client into peripheral IO channels, the RN487a scripting feature is used. For more details about the scripting capabilities please refer to the RN4870/71 User Guide, document DS50002466A.

The script that drives the peripheral values to and from GATT service is written into RN487x non-volatile via the UART. First the module is put into script entry mode, the Script, which is a series of text commands separated by carriage returns. The actual script is displayed in sec 9.3. It can be copied to clip board, and pasted in UART using TeraTera. Similarly, the PC Utility will load it into RN4870.

To manually load the Sensor Board script, follow the instructions below. Steps 4.1 and 4.2

1. Connect the RN4870 PICtail to Host PC USB port and Enve
  - a. Using Terminal Emulator, open the COM port to RN4870
  - b. Type the command mode sequence “\$\$\$” to enter command
  - c. Enter “+” for turn on ECHO.
2. Enter Script Entry mode
  - a. Enter “WW” command to put RN4870 in script entry mode. Note that this command does NOT return an “AOK” response.
  - b. Copy the script text from section 9.3 into clipboard using Ctrl-C.
  - c. From TeraTerm, paste this Script using Alt-V (Paste) command. A dialog window showing the script text from clipboard should display as shown figure 20 below

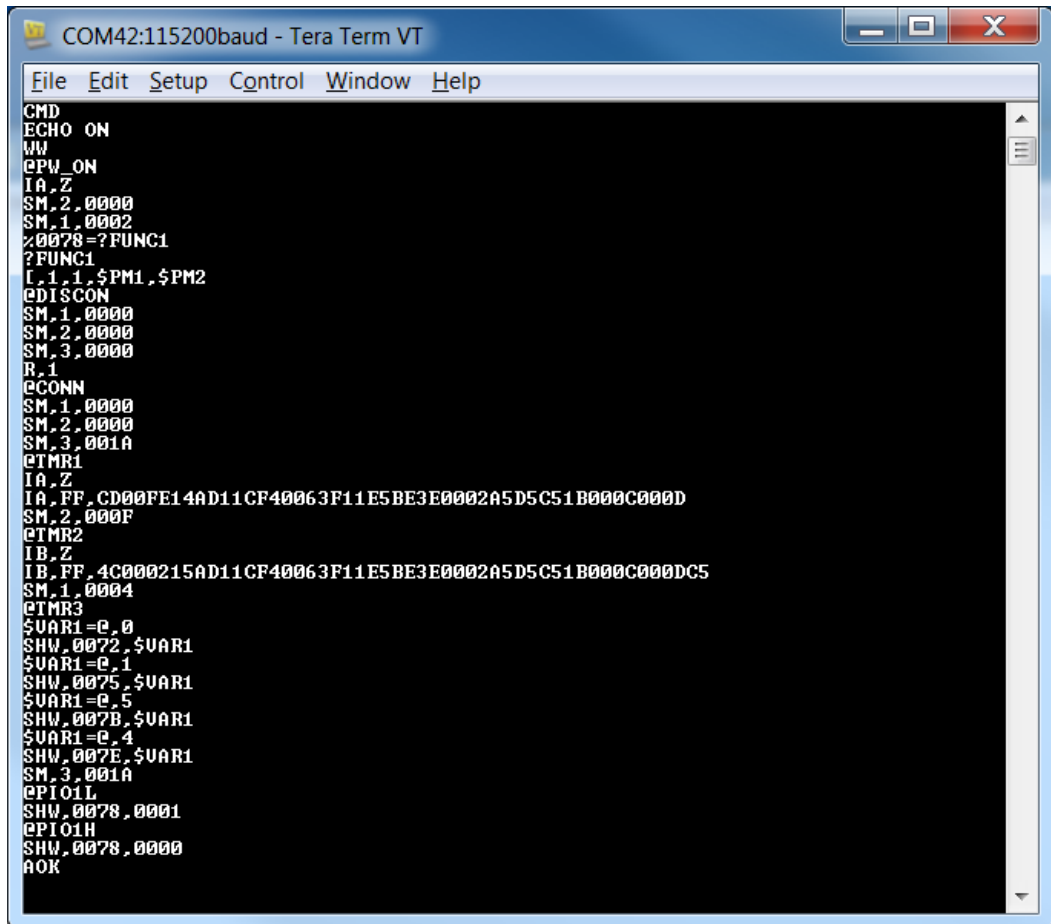


# RN487x PICtail / PICtail Plus Board

---

Figure 20: Sensor Board Script displayed from Clipboard

- d. Press OK to load the script into the RN4870.
- e. After the script is pasted into the RN4870, exit Script Entry mode by pressing the ESC key. An “AOK” response is send to terminal indicating exit from Script mode. The script entry is show in Figure 21 below.



```
COM42:115200baud - Tera Term VT
File Edit Setup Control Window Help
CMD
ECHO ON
MM
OPW_ON
IA.Z
SM.2.0000
SM.1.0002
%0078=?FUNC1
?FUNC1
L.1.1.$PM1,$PM2
@DISCON
SM.1.0000
SM.2.0000
SM.3.0000
R.1
@CONN
SM.1.0000
SM.2.0000
SM.3.001A
@TMR1
IA.Z
IA.FF,CD00FE14AD11CF40063F11E5BE3E0002A5D5C51B000C000D
SM.2.000F
@TMR2
IB.Z
IB.FF,4C000215AD11CF40063F11E5BE3E0002A5D5C51B000C000DC5
SM.1.0004
@TMR3
$VAR1=c,0
SHW.0072,$VAR1
$VAR1=c,1
SHW.0075,$VAR1
$VAR1=c,5
SHW.007B,$VAR1
$VAR1=c,4
SHW.007E,$VAR1
SM.3.001A
@PIO1L
SHW.0078,0001
@PIO1H
SHW.0078,0000
AOK
```

Figure 21: Completed Sensor Board Script

- f. Enter the “R,1” to reboot the RN4870. After the reboots the Sensor Board is now ready to use. The script event handlers can be seen scrolling on TeraTerm display as show below in Figure 22:



# RN487x PICtail / PICtail Plus Board

---

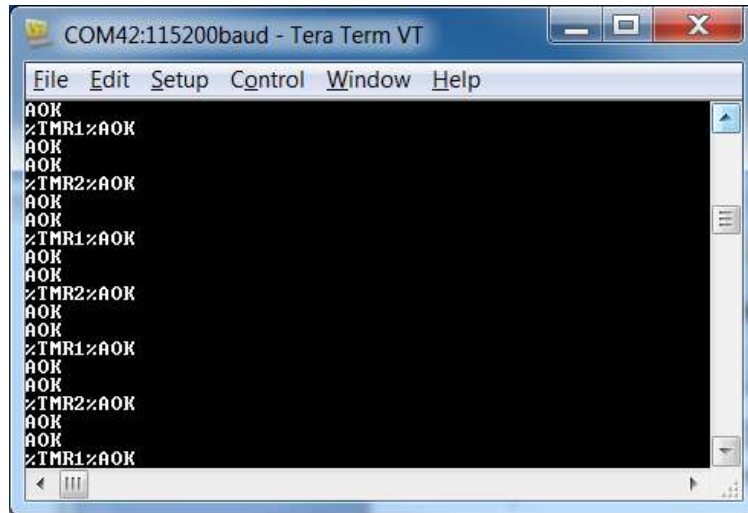


Figure 22: Sensor Script running

## 4.4. BLESensorAPP SmartPhone APP

The RN4870 Sensor Board is a BLE Peripheral that advertises a GATT service to BLE Central devices. In this demonstration, the BLE Central device is a SmartPhone Application named BLESensorAPP. It is available for iOS and Android platforms via iTunes APPSTORE, and Google PLAYSTORE respectively. Search for the “Microchip BLESensorAPP”, and download the APP matching the icon in figure 23 below.



Figure 23: BLESensorAPP icon

The BLESensorAPP requires that the sensor board be configured as described in sections 4.1 to 4.3.

1. Verify the sensor board is attached to the RN4870 PICtail as shown in figure 1.
2. Verify the jumpers and switches match those in figure 2
  - a. SW7 must be in the “1” position
3. Power the PICtail via USB
  - a. Connect the RN4870 PICtail board to power up.
  - b. Verify LED1 blue should blink with long interval.
4. Launch the APP from the SmartPhone. Note that in this example, the iOS version is used as shown in right hand side of figure 24 below.
5. The BLESensorAPP will attempt to connect to the first RN4870 Sensor board that it

# RN487x PICtail / PICtail Plus Board

discovers. Once connect the APP main user interface is displayed.

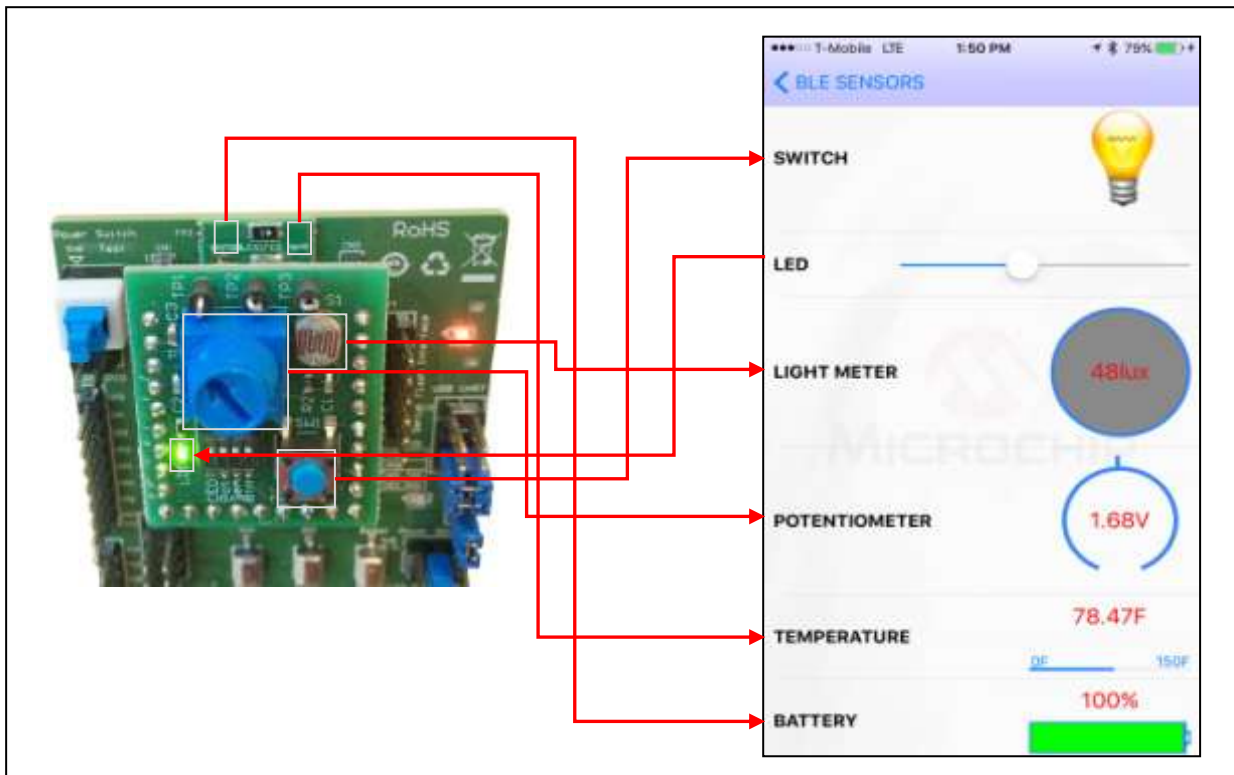


Figure 24: BLE Data Flow from Sensor Board Peripheral IO to BLESensorAPP

Figure 24 illustrates the data flow from RN4870 Sensor Peripheral IO to SmartPhone APP. The data moving from the Sensor Board to the APP is performed by GATT Notifications. The script polls the sensor values, such as Switch, Light Meter, and writes the values into the appropriate GATT Characteristic. If the values changes, a GATT Notifications is sent to BLESensorAPP where the APP updates the GUI.

BLE data can also be transferred from BLESensorAPP into the RN4870, and later processed by the script to write a received value into Peripheral output channel. In the Sensor board demo, the user uses to slider control on the APP to select a blink rate value. The value is written to the GATT characteristic in the RN4870. The sensor script monitors the Characteristic for incoming data then extracts the value which is subsequent written to the PWM output peripheral to control blink LED blink rate.

For more information on BLE GATT data transfers refer to section 8.0: BLE Primer.

# RN487x PICtail / PICtail Plus Board

---

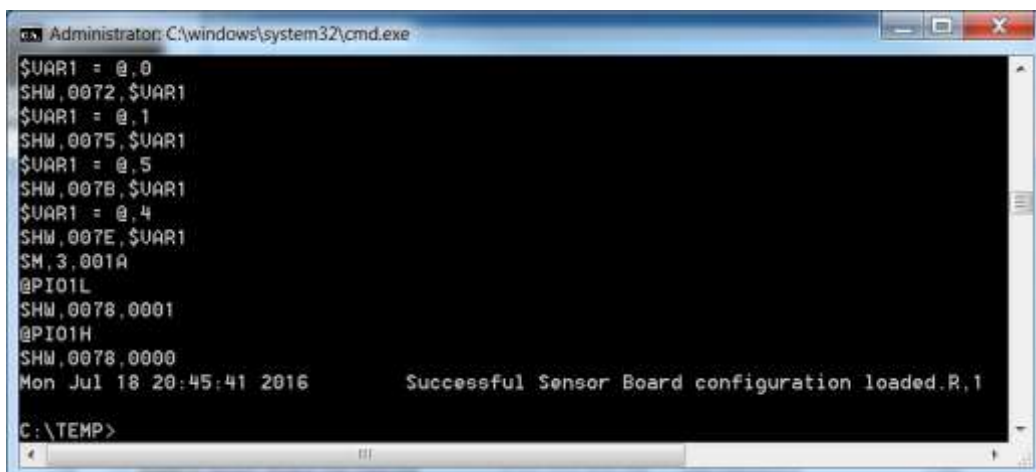
## 4.5. RN4870 Sensor Board Configuration Utility

The Sensor Board Configuration Utility is a command line PC utility that configures the RN4870 PICTail to use the Sensor Board as a GATT Service. Download the **RN4870-Sensor-Board-Config.zip** from [www.microchip.com/RN4870](http://www.microchip.com/RN4870). Extract the contents into a separate folder on the host PC.

This utility requires the MCP2200 USB/UART CDC drivers. The driver is also available from the web page. Install the driver if needed.

To configure a an RN4870 Sensor Board

1. Verify the sensor board is attached to the RN4870 PICtail as shown in figure 1.
2. Verify the jumpers and switches match those in figure 2
  - a. SW7 must in be in the “1” position
3. Connect the RN4870 PICtail board to host PC via micro USB cable
  - a. Verify LED1 blue should blink with long interval.
4. Verify that the COM has enumerated on the host PC. Check device manager and note the COM port.
5. Open a command prompt window
  - a. From command prompt window, enter the following command:  
RN4870-sensor-board-cfg-cmd.exe COMxx
  - b. The configuration commands sent to the RN4870 are displayed on the command console.
6. Verify the success message is displayed on console as show below.



```
Administrator: C:\windows\system32\cmd.exe
$UART = @,0
SHW,0072,$UART
$UART = @,1
SHW,0075,$UART
$UART = @,5
SHW,007B,$UART
$UART = @,4
SHW,007E,$UART
SM,3,001A
@PI01L
SHW,0078,0001
@PI01H
SHW,0078,0000
Mon Jul 18 20:45:41 2016          Successful Sensor Board configuration loaded.R.1
C:\TEMP>
```

# RN487x PICtail / PICtail Plus Board

---

## 5. PIC Configuration Library

The BM7x Configuration Library provides a set of functions for RN487x to create command packets to update its Bluetooth parameter table, perform pairing procedure, configure a subset of parameters in application mode, set the module to different operating modes. The RN487x uses the UART interface for configuration and data transfer. The RN487x configuration and events are defined as command and response protocol packets. A command packet is sent to RN487x over UART to update a parameter. Response packet is received from RN487x over UART for the command issued. RN487x also sends out event packets over UART when a defined event occurs. The PICtail Plus and PICtail interface on the RN487x PICtail board is used to configure the RN487x module over the UART using the BM7x Configuration Library with an external PIC MCU and to send and receive raw data over UART. The PICtail interface can also be used to access the UART and the GPIOs on the RN487x module.

### 5.1. Using BM7x Configuration Library with RN487x PICtail

The RN487x PICtail plugs into the Explorer 16 Development Board with a PIC32/PIC24 Plug-In-Module (PIM) or PIC18 Explorer Board with PIC18 PIM. The BM7x Configuration Library demo is an example application that can be programmed in to the PIC32/PIC24/PIC18 to configure and control the RN487x module on the PICtail board.

#### Download/Install

1. Download the BM7x Configuration Library installer from [www.microchip.com/RN4870](http://www.microchip.com/RN4870)
2. Install the library on a Windows PC.
3. Refer to the [getting\\_started.htm](#) file for more information on the MPLABX workspace.

#### Programming/Debugging

1. Plug-in the PIC Plug-In-Module (PIM) into the relevant Explorer Development Board based on the hardware combination selected for evaluation.  
Note: If using [PIC32MX795F512L PIM](#), ensure that on jumpers J1 and J2 on the PIM, pins 2 and 3 are connected using a jumper to select the CAN configuration and all jumpers on J9 and J10 on the PIM are not connected.
2. Plug-in the RN487x PICtail Plus board in to the Explorer Development Board with the RN487x module facing towards the PIC PIM as shown in Fig 18 or Fig 19 based on hardware combination used.
3. Optionally a debug UART port can be connected to a PC terminal emulator program.  
Note: On the Explorer 16 Development Board, debug UART is available on the DB9 UART serial connector P1. On the PIC18 Explorer Board, the debug UART will need to be manually tapped from pins RG1/TX2 and RG2/RX2 on J5 header using external wiring.
4. Provide power through the 9V power input port available on the Explorer Development Board.

## RN487x PICtail / PICtail Plus Board

---



Figure 18: Explorer 16 Development Board with RN4870 PICtail Plus

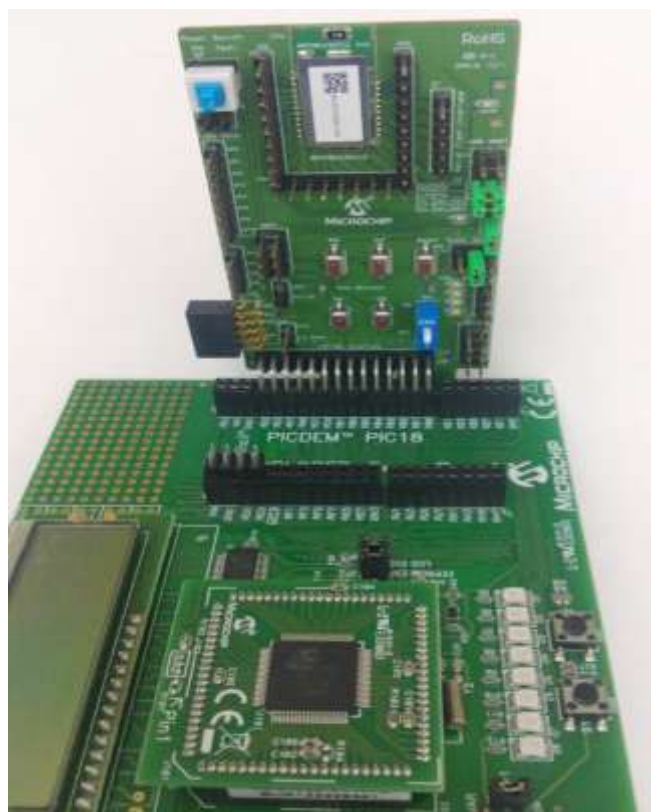
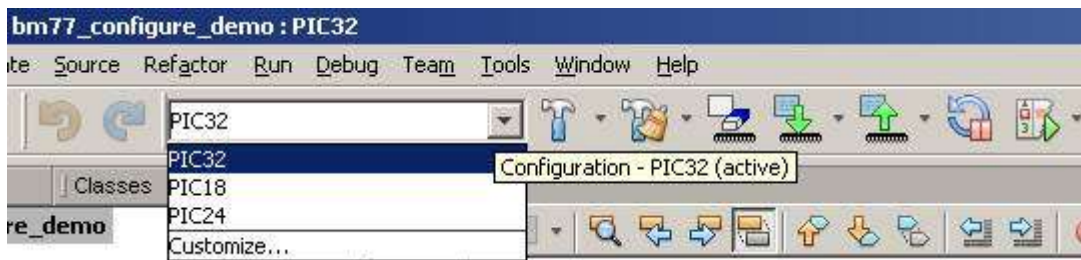


Figure 19: PIC18 Explorer Board with RN4870 PICtail Plus

# RN487x PICtail / PICtail Plus Board

---

5. Program the PIC32 with the 'bm7x\_configure\_demo\_xc32.hex' or PIC24 with the 'bm7x\_configure\_demo\_xc16.hex' or PIC18 with the 'bm7x\_configure\_demo\_xc8.hex' in the 'precompiled\_hex' sub-directory.
6. Alternately open the 'bm7x\_configure\_demo.X' MPLABX workspace provided using the MPLABX IDE and compile and program or enter debug mode either selecting the PIC32 workspace configuration or the PIC24 workspace configuration or the PIC18 workspace configuration based on the hardware combination selected as shown in the figure below:



7. Change the '#define BMXX\_DEVICE xyz' in main.c to **BM70\_BLUETOOTH\_DEVICE** to work with RN4870.

## Connecting/Running Demo

1. After setting up the hardware combination and programming the PIC using the above steps run the PIC program.
2. Observe the RN487x configuration by putting break points in the workspace or by optionally using the debug UART mentioned above.
3. Download and install the "BtChat\_V1.0.3.apk" on the Android device from the BM7x PICtail Plus webpage.
4. Open the "BtChat" app installed by the "BtChat\_V1.0.3.apk" on the Android device.
5. Scan for the Bluetooth devices on the Android app.
6. Select your BM7x device listed in the scan list and click to pair and connect.
7. By default the application uses "Just Works" pairing. If using the "Passkey Entry" or "Passkey Yes/No Confirm" mode then provide the passkey or confirmation using the debug UART port. For RN4870 module, please refer the documentation for the pairing modes supported.
8. Once connected, the data can be transmitted from BM7x through the debug UART port to the "BtChat" app over Bluetooth link.
9. Enable "Show Rx Text" option in the "BtChat" app "Setting". The "BtChat" app can send data back to the BM7x which is later received through the debug UART.

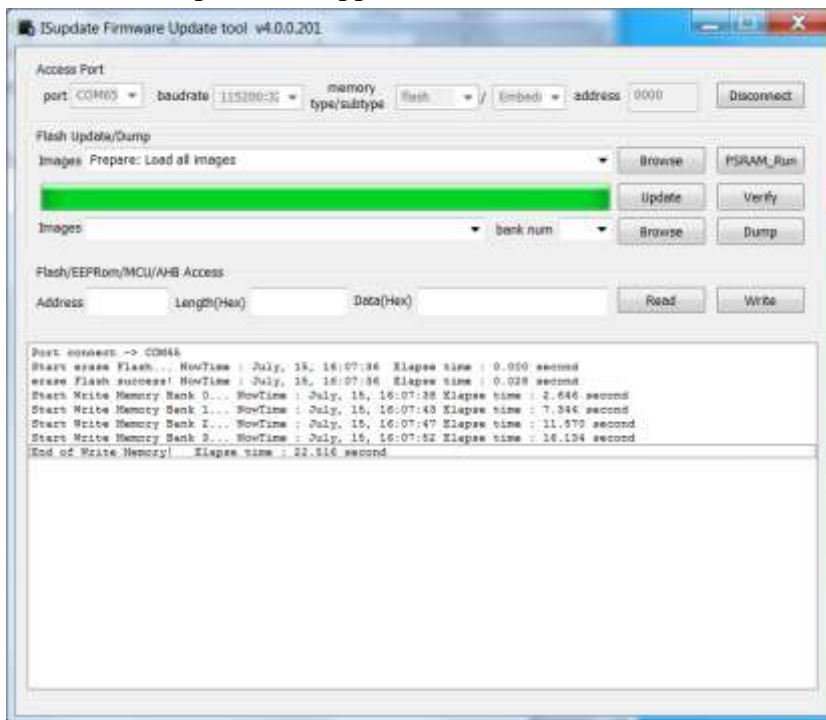
# RN487x PICtail / PICtail Plus Board

## 6. Appendix A: Updating RN4870/71 PICTail Firmware

Firmware for the RN4870/71 PICTail can be updated using a PC Tool isupdate.exe over the USB port. The latest RN4870/71 firmware images isupdate.exe firmware load is available from the product page at [www.microchip.com/RN4870](http://www.microchip.com/RN4870).

To update the firmware on the RN4870 PICTail follow the instructions below.

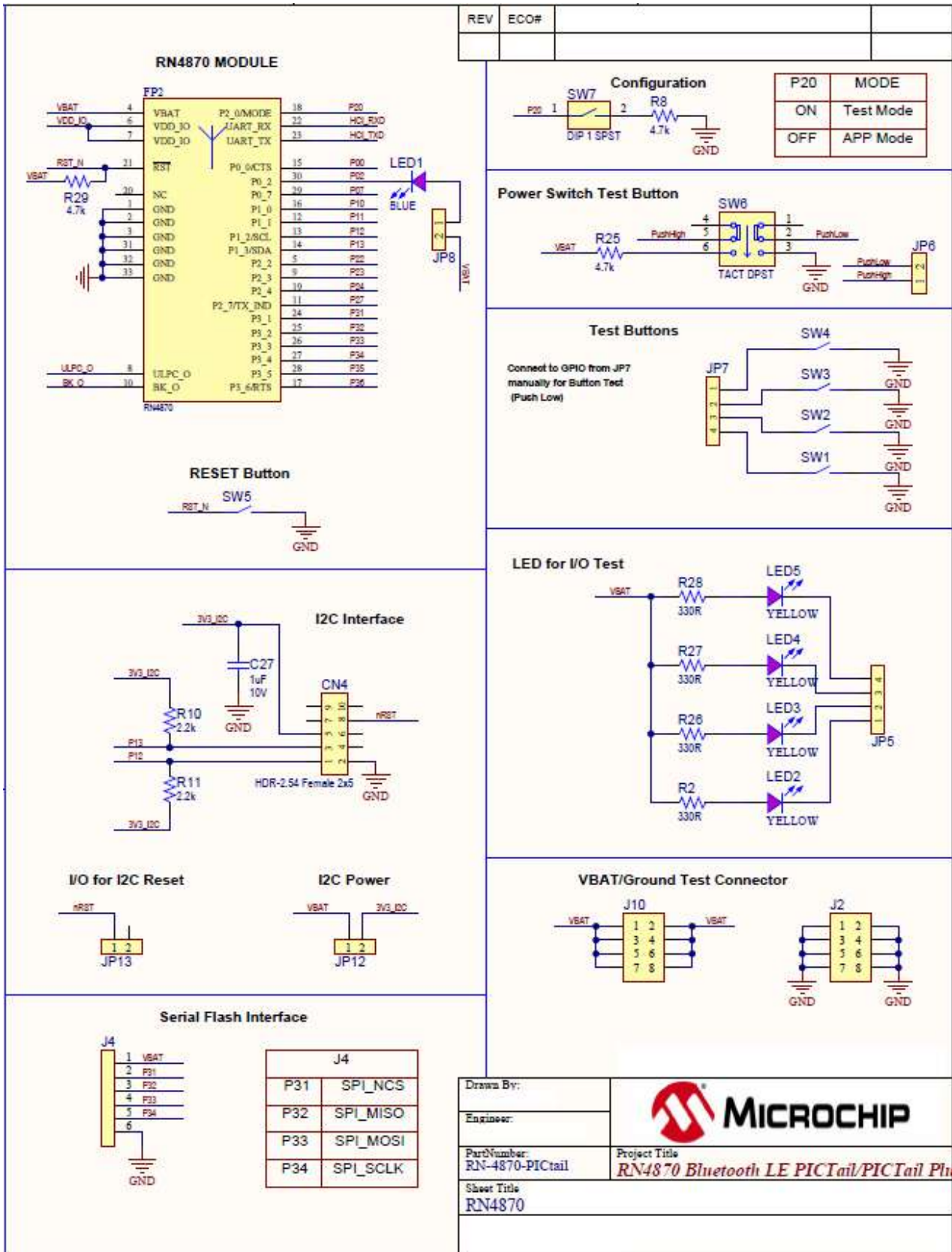
1. Download the firmware zip file from product web page and extract the contents. The zip file contains the isupdate.exe utility and a folder the firmware images are included.
2. Connect the PICTail to the PC host using the micro USB cable. Verify that the
3. Set SW7 is set to “ON” position
4. Press SW5 reset button and verify LED1 is non-flashing blue indicating RN487x module is in programming mode.
5. Launch the isupdate.exe application







# RN487x PICtail / PICtail Plus Board



Drawn By:	
Engineer:	
Part Number: RN-4870-PICtail	Project Title: RN4870 Bluetooth LE PICtail/PICtail Plus
Sheet Title: RN4870	

# RN487x PICtail / PICtail Plus Board

## 7.2. RN4870 PICTail BOM

Qty	Designator	Description	Manufacturer	Manufacturer Part Number
3	C8, C10, C27	CAP CER 1uF 10V 10% X5R SMD 0402	Murata Electronics North America	GRM155R61A105KE15D
1	C12	CAP TANT 47uF 16V 10% 0.11R SMD C	AVX Corporation	TPSC476K016R0110
2	C17, C28	CAP CER 1uF 16V 10% X7R SMD 0603	TDK	C1608X7R1C105K
2	C19, C21	CAP CER 12pF 50V 1% NP0 SMD 0402	Murata Electronics North America	GRM1555C1H120FA01D
3	C20, C23, C24	CAP CER 0.1uF 16V 10% X7R SMD 0603	AVX	0603YC104KAT2A
3	CN1, CN2, CN3	CON HDR-2.54 Male 1x9 Gold 5.84MH TH VERT	Samtec	TSW-109-07-G-S
1	CN4	CON HDR-2.54 Female 2x5 GOLD TH R/A	Samtec Inc.	SSQ-105-02-G-D-RA
2	FB1, FB2	FERRITE 300R@100MHz 2A SMD 0805	Laird-Signal Integrity Products	MI0805L301R-10
1	J1	CON HDR-2.54 Male 2x3 Gold 5.84MH TH VERT	Samtec	TSW-103-08-L-D
3	J2, J3, J10	CON HDR-2.54 Male 2x4 Gold 5.84MH TH VERT	Samtec	TSW-104-08-L-D
1	J4	CON HDR-2.54 Male 1x6 Gold 5.84MH TH VERT	FCI	68001-106HLF
1	J8	CON HDR-2.54 Male 2x14 Gold 5.84MH TH R/A	Sullins	PBC14DBDN
2	JP5, JP7	CON HDR-2.54 Male 1x4 Gold 5.84MH TH VERT	Samtec	TSW-104-07-G-S
4	JP6, JP8, JP12, JP13	CON HDR-2.54 Male 1x2 Gold 5.84MH TH VERT	FCI	77311-118-02LF
1	JP10	CON HDR-2.54 Male 1x8 Gold 5.84MH TH	FCI	68001-108HLF
1	LED1	DIO LED BLUE 2.8V 20mA	Lite-On	LTST-C193TBKT-5A

## RN487x PICtail / PICtail Plus Board

		15mcd Clear SMD 0603		
4	LED2, LED3, LED4, LED5	DIO LED YELLOW 2.1V 20mA 6mcd Clear SMD 0603	Lite-On	LTST-C190YKT
1	LED6	DIO LED RED 1.8V 40mA 10mcd Clear SMD 0603	Lite-On	LTST-C190KRKT
1	P1	CON USB2.0 Micro-B Female SMD R/A	FCI	10118193-0001LF
4	R2, R26, R27, R28	RES TKF 330R 1% 1/16W SMD 0402	KOA Speer	RK73H1ETTP3300F
2	R8, R25	RES TKF 4.7k 5% 1/10W SMD 0603	Panasonic	ERJ-3GEYJ472V
3	R10, R11, R13	RES TKF 2.2k 1% 1/10W SMD 0402	Panasonic	ERJ-2RKF2201X
1	R20	RES TKF 10k 5% 1/8W SMD 0805	Panasonic	ERJ-6GEYJ103V
1	R21	RES TKF 470R 5% 1/8W SMD 0805	Panasonic	ERJ-6GEYJ471V
1	R24	RES TKF 1k 5% 1/8W SMD 0805	Panasonic	ERJ-6GEYJ102V
1	R29	RES TKF 4.7K 1% 1/16W 0402	KOA Speer	RK73H1ETTP4701F
1	SK1	BATT HOLDER COIN 1 TH CR2450	Keystone Electronics	1053
6	SW1, SW2, SW3, SW4, SW5, SW8	SWITCH TACT SPST 12V 50mA RS-282G05A3-SM RT	C&K Components	RS-282G05A3-SM RT
1	SW6	SWITCH TACTILE PUSH ON-OFF 6 PIN	ROKI ELECTRONICS CO., LTD.	PS07-22L-PF
1	SW7	SWITCH DIP 1 SPST 24V 25mA 418117270901 SMD	Würth Electronics Inc	418117270901
1	X1	CRYSTAL 12MHz 8pF SMD NX3225SA	NDK	NX3225SA-12.000000MHZ
1	FP2	MCHP RF BLUETOOTH RN4870-V/RM118 MODULE-33	Microchip Technology Inc	RN4870-V/RM118
1	U2	MCHP ANALOG LDO 3.3V MCP1700T-3302E/TT	Microchip Technology Inc	MCP1700T-3302E/TT



## RN487x PICtail / PICtail Plus Board

1	R2	RES TKF 12k 1% 1/10W SMD 0603	Yageo	RC0603FR-0712KL
1	R3	RES TKF 100R 1% 1/10W SMD 0603	Panasonic	ERJ-3EKF1000V
1	S1	SENSOR PHOTOCELL 27-60KOHM	Advanced Photonix Inc	PDV-P8104
1	SW1	SWITCH TACT SPST 12V 50mA PTS645SM43SMTR92 LFS SMD	C&K Components	PTS645SM43SMTR92 LFS
1	SW2	SWITCH DIP 4-POS SLIDE SMD 6V	Copal Electronics Inc.	CHS-04TB
3	TP1, TP2, TP3	MISC, TEST POINT MULTI PURPOSE MINI BLACK	Keystone	5001

# RN487x PICtail / PICtail Plus Board

---

## 8. Appendix C: Bluetooth Low Energy Primer

### 8.1. GAP Roles: Peripheral and Central

When two BTLE devices want to be connected, one should be in Central role and the other in Peripheral role. The Peripheral device advertises to show its connectable status, while Central device scans service advertisements, and if needed, will initiate a connection to Peripheral device. Once connected, either end of connection can choose to bond. Once bonded, all security related key will be saved and security process will be waived when reconnecting. Bonded peripheral device could only perform direct advertise, therefore, no longer to able to connect to device other than its bonded peer.

### 8.2. GATT Service: Client and Server

Similar to Bluetooth Classic, BTLE uses the concept of profiles to ensure interoperability between different devices. As illustrated in figure 2, BTLE profiles are collection of services. All BTLE services are built on top of Generic Attribute Profile (GATT), where GATT defines accessibility of attributes called characteristics. The main functionality of BTLE profiles, therefore, is built around the characteristics. For those devices that maintain the value of characteristics in a service, such device is the server of the service. On the other hand, those devices that acquire data from their peer are called client.

Each service and its characteristics could be identified by their Universally Unique Identifier (UUID). The UUID can be a short form (16bit) or long form (128bit). **As specified by Bluetooth Core Specifications, all Bluetooth SIG adopted (public) services and characteristics have short UUID (16bit), while user defined private UUID are in long form (128bit).** For the details of Bluetooth SIG adopted services and characteristics, please refer to <https://developer.bluetooth.org/gatt/profiles/Pages/ProfilesHome.aspx>.

The accessibility of each characteristic is defined by 8-bit characteristic property in bitmap format, as shown in table 1 below.

Property	Bitmap Value	Description
Extended Property *	0x80	Additional property available
Authenticated Write *	0x40	Write characteristic with authentication from client to server
Indicate	0x20	Indicate value of characteristic with acknowledgement from server to client
Notify	0x10	Notify value of characteristic without acknowledgement from server to client

# RN487x PICtail / PICtail Plus Board

---

Write	0x08	Write value of characteristic with acknowledgement from client to server
Write without response	0x04	Write value of characteristic without acknowledgment from client to server
Read	0x02	Read value of characteristic. Value is sent from server to client
Broadcast *	0x01	Broadcast value of characteristic

Table 1. Characteristic Properties

\* Currently not supported in RN487x

As shown in figure xx, below, the GATT Client can access the characteristics in the GATT Server in the peripheral device. When connected, the client reads the GATT Server service and characteristic UUIDs. The characteristic values can be accessed by the GATT client using Write, Read, Indication and Notifications.

Write-REQ allow client to update characteristic values on the Peripheral's GATT server. The write requests can be performed using RN4870 CHW and CUW commands. See section 3.8 for more details on GATT characteristic access commands.

A Write-CMD message performs an unacknowledged write from a client to server. This is allowed for Transparent UART writes on the RN4870 when SR,0100 command is used.

A client sends Read-REQ read a characteristic value on the Peripheral's GATT server. The write requests can be performed using RN4870 CHR and CUR commands.

Notifications and Indications are unsolicited updates sent from Server to Client. The client must enable the notification and indication on a characteristic to receive the updates. On the RN487x, this done by using the CUW or CHW command to write non-zero value to the Notification Characteristic. When RN487x in client mode receives a notification, and %WC, hhhh, ddddddd% message is return on UART in command mode.

# RN487x PICtail / PICtail Plus Board

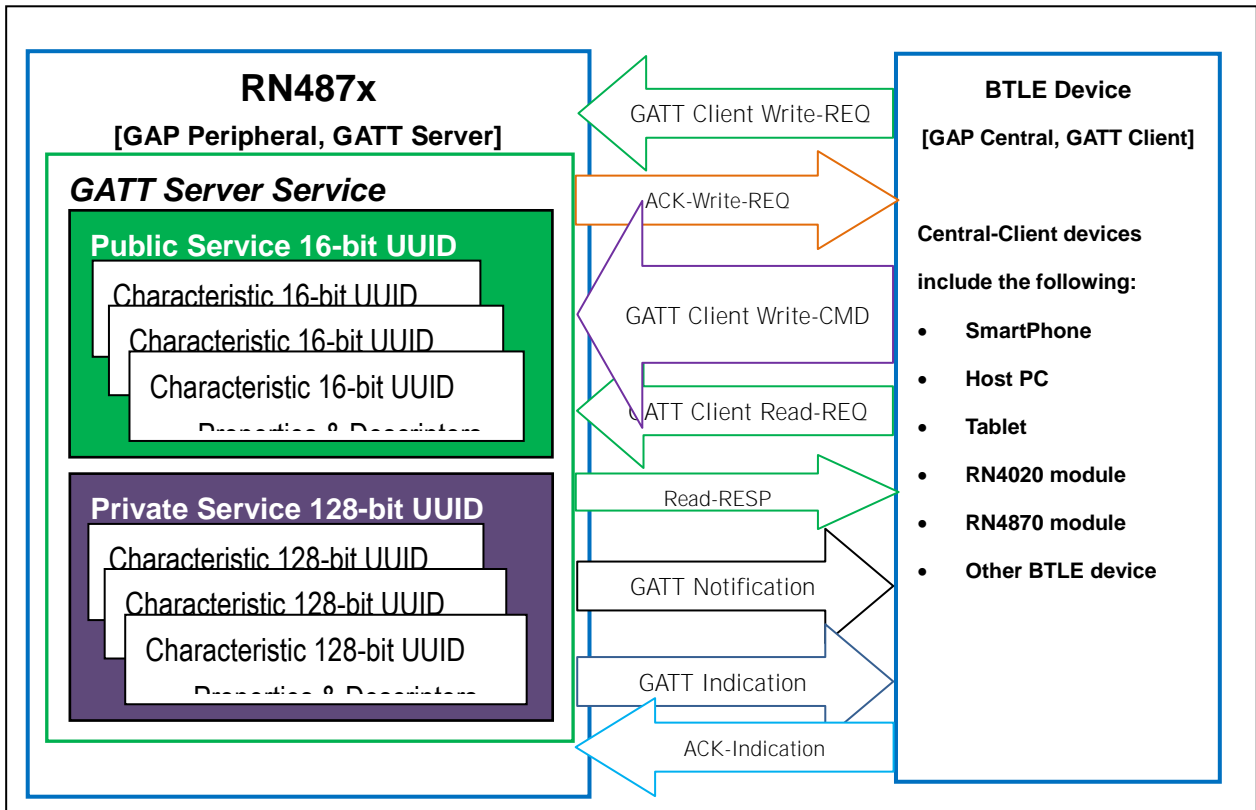


Figure XX: GATT Service in RN487x



# RN487x PICtail / PICtail Plus Board

---

## 9. Appendix D: Sensor Board Configuration Command Text

The following text can be copied

### 9.1. RN4870 Module Settings

```
WP
WC
PZ
S-,RN4870
SR,4040
SS,80
SW,01,00
SW,02,00
SW,03,00
SW,04,09
R,1
```

### 9.2. RN4870 Sensor Board GATT Service

```
PZ
PS,AD11CF40063F11E59E690002A5D5C51B
PC,BF3FBD80063F11E59E690002A5D5C501,10,02
PC,BF3FBD80063F11E59E690002A5D5C502,10,02
PC,BF3FBD80063F11E59E690002A5D5C503,18,14
PC,BF3FBD80063F11E59E690002A5D5C504,10,02
PC,BF3FBD80063F11E59E690002A5D5C505,10,02
R,1
```

# RN487x PICtail / PICtail Plus Board

---

## 9.3. Sensor Board Script

```
@PW_ON
IA,Z
SM,2,0000
SM,1,0002
%0078=?FUNC1
?FUNC1
[,1,1,$PM1,$PM2
@DISCON
SM,1,0000
SM,2,0000
SM,3,0000
R,1
@CONN
SM,1,0000
SM,2,0000
SM,3,001A
@TMR1
IA,Z
IA,FF,CD00FE14AD11CF40063F11E5BE3E0002A5D5C51B000C000D
SM,2,000F
@TMR2
IB,Z
IB,FF,4C000215AD11CF40063F11E5BE3E0002A5D5C51B000C000DC5
SM,1,0004
@TMR3
$VAR1=@,0
SHW,0072,$VAR1
$VAR1=@,1
SHW,0075,$VAR1
$VAR1=@,5
SHW,007B,$VAR1
$VAR1=@,4
SHW,007E,$VAR1
SM,3,001A
@PIO1L
SHW,0078,0001
@PIO1H
SHW,0078,0000
```