

För icke direkt toleranssatta mått gäller toleransklass
General tolerances if not otherwise stated

NOM DIM MM		TOL CLASS		
From	To	A	B	C
(1)	6	±0.05	±0.1	±0.2
(6)	30	±0.1	±0.2	±0.5
(30)	100	±0.15	±0.3	±0.8
(100)	300	±0.2	±0.5	±1.2
(300)	1000	±0.3	±0.8	±2

Hål / Holes H13

Skarpa kanter brutna där ej annat anges.
No sharp edges unless otherwise specified.

Övriga generella toleranser enligt ritning 4100-4644.
Additional general tolerances in accordance with drawing 4100-4644.

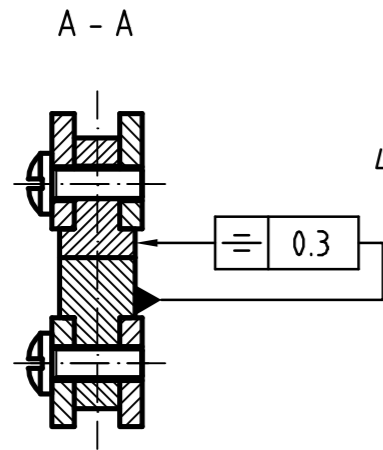
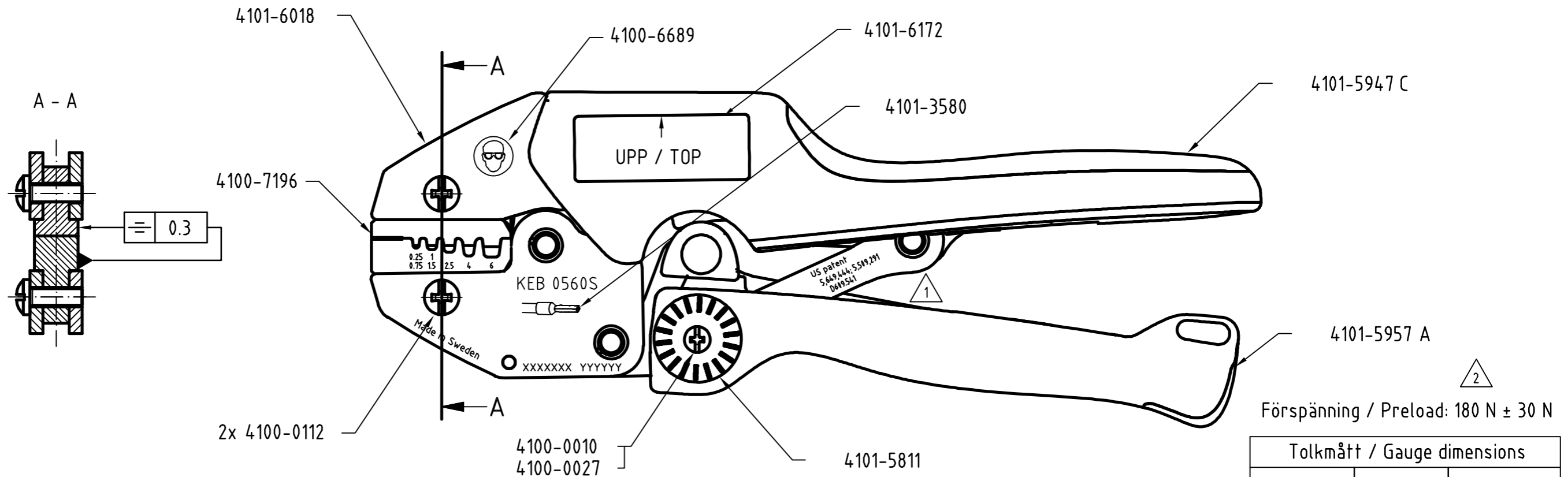
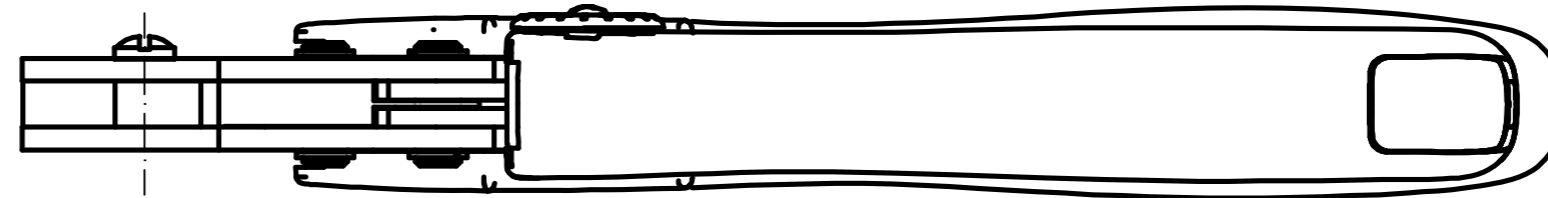
LASERMÄRKNING/LASER MARKING:

TEXTFONT: GEN-ISO

Datumkod / Date code "YYYYYY"

Serienummer / Serial number "XXXXXXX"

Rev	Change order	Change: A = Added W = Was D = Deleted C = Changed	Date	Sign
1	1046196000	D 4100-1298A ÄU1046348000 D609.541 W Pat. pend.	100330	SE
2	1052849000	180N W 130N	110824	SE



Tolkmått / Gauge dimensions		
urtag / nest	gåtolk / go gauge	stopptolk / no go gauge
0.25 - 0.75	∅0.45	∅0.65
1.0 - 1.5	∅0.75	∅0.95
2.5	∅1.40	∅1.60
4.0	∅2.25	∅2.45
6.0	∅2.30	∅2.50

4101-2610
4101-5828
4101-6507 S - placering position A
4101-6301
TILLTRYCK PÅ KORT (4101-6301) ENLIGT OMT DOKUMENT NR.:1044643000
PRINTING ON CARD (4101-6301) ACCORDING TO OMT DOCUMENT NO.:1044643000

Packas enligt förpackningsritning 4101-2741
Packed according to drawing 4101-2741

Den här ritning är Pressmaster AB:s egendom. Skyddad av gällande lag.
This drawing is the property of Pressmaster AB. Protected in accordance with prevailing law.

Material		Behandling/Treatment		Status	
Konstr/Design NIJO	Ritad/Drawn MANO	Datum/Date 2011-08-24	Skala/Scale 1:1	Kontr/Checked IP	Godk/Approved NE
pressmaster 				Benämning/Denomination KRIMPTÅNG KEB 0560S CRIMPING TOOL	
Vikt/Weight, gram 43003696			Art grp 012		
Ritn nr./Drawing no 43003696			REV 002		