

GENERAL SPECIFICATIONS

Electrical Capacity (Resistive Load)

- Power Level:** 500mA @ 125V AC for silver contacts
- Logic Level:** 0.4VA maximum @ 28V AC/DC maximum for gold contacts
- Note:** See Supplement Index (page Z1) to find explanation of operating range.

Other Ratings

- Contact Resistance:** 30 milliohms maximum
- Insulation Resistance:** 100 megohms minimum @ 500V DC
- Dielectric Strength:** 1,000V AC minimum
- Mechanical Life:** 50,000 operations minimum
- Electrical Life:** 50,000 operations minimum
- Nominal Operating Force:** 220 grams
- Travel:** 1.1mm (.043") pretravel; 0.57mm (.022") overtravel; 1.67mm (.065") total travel

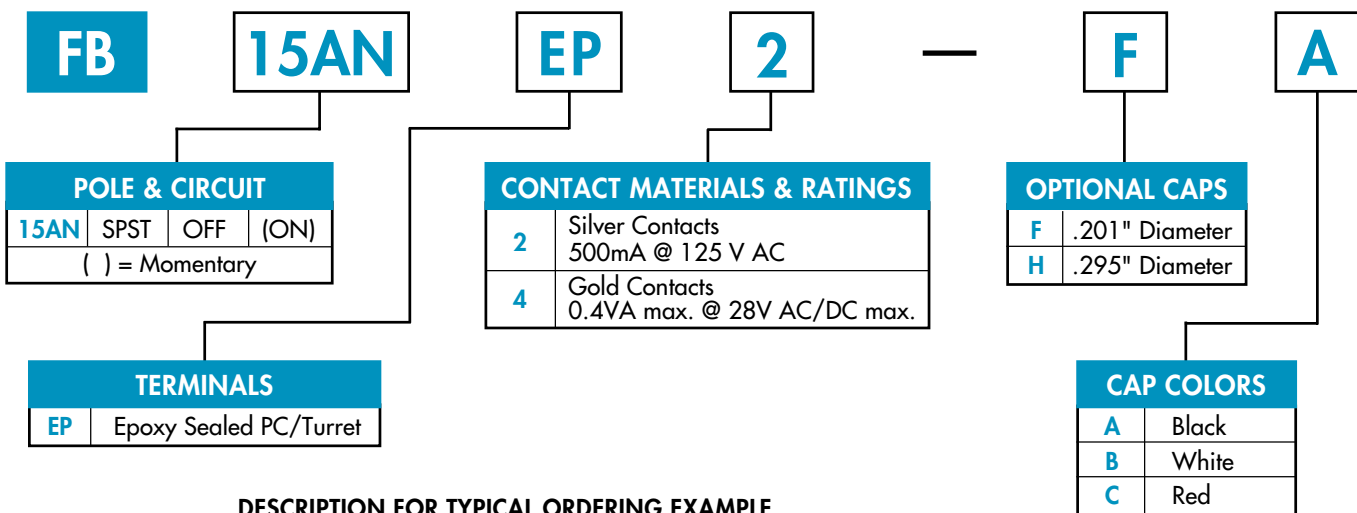
Materials & Finishes

- Plunger:** Polyacetal
- Bushing/Housing:** Brass with nickel plating
- Case:** Phenolic resin
- Movable Contact:** Brass with silver or gold plating
- Stationary Terminals:** Phosphor bronze with silver or gold plating

Environmental & Installation Data

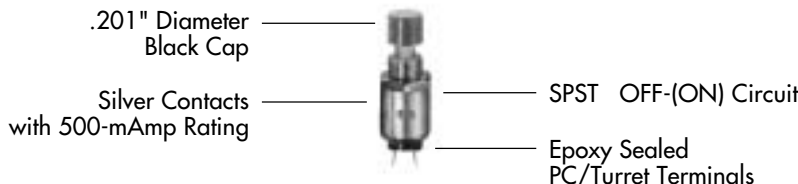
- Operating Temp Range:** -10°C through +70°C (+14°F through +158°F)
- Soldering Time & Temperature:** 5 seconds @ 270°C

TYPICAL SWITCH ORDERING EXAMPLE



DESCRIPTION FOR TYPICAL ORDERING EXAMPLE

FB15ANEP2-FA

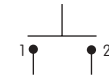


IMPORTANT:

Switches are supplied without UL marking unless specified. Specific models & ratings noted on Engineering Particulars page.

POLES & CIRCUITS

		Plunger Position () = Momentary		Connected Terminals		Throw & Schematic
Pole	Model	Normal	Down	Normal	Down	
						Note: Terminal numbers are not actually on the switch.
SP	FB15AN	OFF	(ON)	OPEN	1-2	

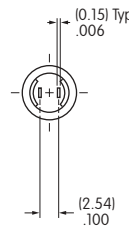
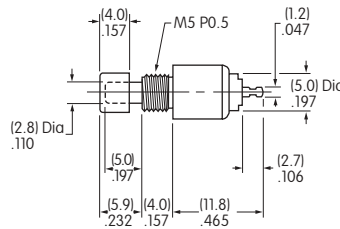
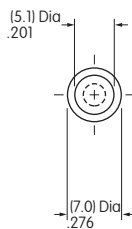


CONTACT MATERIALS & RATINGS

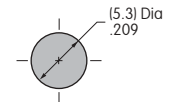
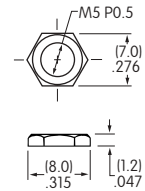
2	Silver Contacts	Power Level	500mA @ 125V AC
4	Gold Contacts	Logic Level	0.4VA maximum @ 28V AC/DC maximum

TYPICAL SWITCH DIMENSIONS

PC/Turret



Standard Hardware:
AT536 Hex Nut
Material: Brass with
nickel plating



Panel Thickness:
2.8mm (.110")
maximum

FB15ANEP2-FA

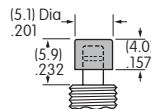
Plunger is white polyacetal.

OPTIONAL SLIP-ON CAPS & COLORS

F AT475
.201" Diameter

Material: Polycarbonate

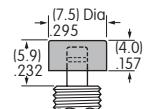
Finish: Glossy



H AT496
.295" Diameter

Material: Polycarbonate

Finish: Glossy



Colors Available:

A Black

B White

C Red