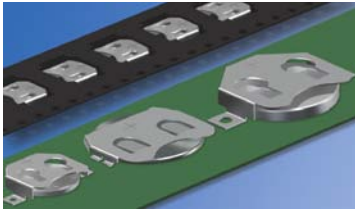


# THRU HOLE (THM) & SURFACE MOUNT (SMT) COIN CELL RETAINERS

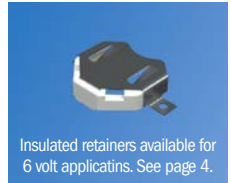
AVAILABLE ON TAPE AND REEL



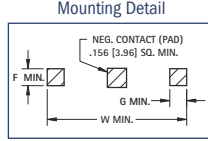
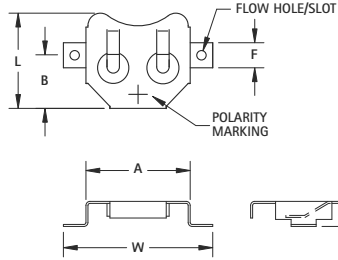
SURFACE MOUNT (SMT)

Battery retainers are suited for high density PCB packaging. Engineered with reliable spring tension, these contacts assure low resistance while firmly securing the battery within the retainer.

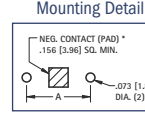
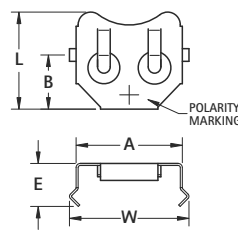
- Compatible with all wave and reflow operations
- Solder tails located outside of retainer body which facilitates visual inspection of the solder joints
- Flow-hole solder tail designed for increased joint strength
- Compatible with most vacuum and mechanical pick & place assembly systems
- Matte Tin Plate for lower soldering temperatures ideal where other temperature sensitive components are being used
- Tin-Nickel plated retainers are ideal for lead free, high temperature soldering applications
- All conductive polystyrene carrier tape meets ANSI/EIA-481 standards



Insulated retainers available for 6 volt applications. See page 4.



SURFACE MOUNT (SMT)

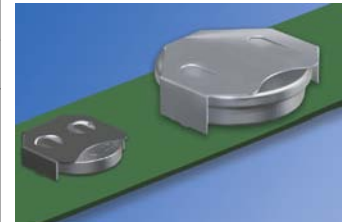


THRU HOLE MOUNT (THM)

MATERIAL: .010 (.25) Phosphor Bronze

TIN-NICKEL PLATE		MATTE TIN PLATE		REFER TO SURFACE MOUNT (SMT) DRAWING									
CAT. NO. BULK	ON TAPE & REEL	CAT. NO. BULK	ON TAPE & REEL	A	B	F	G	H	L	W	CELL DIA.	BATTERY REFERENCE	TAPE & REEL SPEC'S
3000	3000TR	3080	3080TR	.520 (13.2)	.265 (6.7)	.125 (3.2)	.125 (3.2)	.125 (3.2)	.475 (12.1)	.745 (18.9)	12mm	CR1216, BR1220, CL1225	32mm wide; 16mm pitch; 1000/reel
3012	3012TR	3092	3092TR	.664 (16.9)	.344 (8.7)	.125 (3.2)	.125 (3.2)	.156 (4.0)	.594 (15.1)	.914 (23.2)	16mm	BR1612, CR1616, CR1620, DL1632	44mm wide; 24mm pitch; 600/reel
3028	3028TR	3038	3038TR	.831 (21.1)	.298 (7.6)	.200 (5.1)	.050 (1.3)	.067 (1.7)	.618 (15.7)	.911 (23.1)	20mm	BR2012, CR2012, DL2012	44mm wide; 24mm pitch; 1000/reel
3026	3026TR	3078	3078TR	.831 (21.1)	.416 (10.6)	.200 (5.1)	.200 (5.1)	.085 (2.2)	.782 (19.9)	1.210 (30.7)	20mm	BR2016, CR2016, DL2016	44mm wide; 32mm pitch; 750/reel
3034	3034TR	3044	3044TR	.835 (21.2)	.291 (7.4)	.200 (5.1)	.050 (1.3)	.160 (4.1)	.635 (16.1)	0.915 (23.1)	20mm	DL2020, CR2025, CR2032	44mm wide; 24mm pitch; 500/reel
3002	3002TR	3082	3082TR	.831 (21.1)	.416 (10.6)	.200 (5.1)	.200 (5.1)	.156 (4.0)	.782 (19.9)	1.210 (30.7)	20mm	DL2020, CR2025, CR2032	44mm wide; 24mm pitch; 500/reel
3004	3004TR	3084	3084TR	.939 (23.9)	.475 (12.1)	.200 (5.1)	.200 (5.1)	.156 (4.0)	.832 (21.1)	1.339 (34.0)	23mm	BR2320, CL2325, CR2330, DL2335	56mm wide; 32mm pitch; 400/reel
3010	3010TR	3090	3090TR	.939 (23.9)	.475 (12.1)	.200 (5.1)	.200 (5.1)	.240 (6.1)	.819 (20.8)	1.339 (34.0)	23mm	CR2354, DL2354	56mm wide; 32mm pitch; 200/reel
3032	3032TR	3042	3042TR	1.000 (25.4)	.313 (8.0)	.200 (5.1)	.050 (1.3)	.067 (1.7)	.681 (17.3)	1.080 (27.4)	24mm	BR2412, CR2412	44mm wide, 24mm pitch, 1000/reel
3006	3006TR	3086	3086TR	1.000 (25.4)	.506 (12.9)	.200 (5.1)	.200 (5.1)	.156 (4.0)	.918 (23.3)	1.400 (35.6)	24mm	CR2430, DL2430	56mm wide; 32mm pitch; 400/reel
3008	3008TR	3088	3088TR	1.000 (25.4)	.506 (12.9)	.200 (5.1)	.200 (5.1)	.230 (5.8)	.890 (22.6)	1.400 (35.6)	24mm	CR2450, DL2450	56mm wide; 32mm pitch; 200/reel

TIN-NICKEL PLATE		REFER TO THRU HOLE MOUNT (THM) DRAWING									
CAT. NO. BULK	A	B	E	H	L	W	CELL DIA.	BATTERY REFERENCE			
3001	.520 (13.2)	.265 (6.7)	.210 (5.3)	.118 (3.0)	.475 (12.1)	.585 (14.9)	12mm	BR1216, CR1216, BR1220, CL1220, CR1220, BR1225			
3013	.664 (16.9)	.344 (8.7)	.265 (6.7)	.156 (4.0)	.594 (15.1)	.723 (18.4)	16mm	BR1616, CR1612, CR1616, CR1620, CR1632			
3029	.831 (21.1)	.298 (7.6)	.176 (4.5)	.067 (1.7)	.618 (15.7)	.890 (22.6)	20mm	BR2012, CR2012, DL2012			
3027	.831 (21.1)	.416 (10.6)	.194 (4.9)	.085 (2.2)	.782 (19.9)	.890 (22.6)		BR2016, CR2016, DL2016			
3003	.831 (21.1)	.416 (10.6)	.265 (6.7)	.156 (4.0)	.782 (19.9)	.890 (22.6)	23mm	BR2016, DL2020, CR2320, CR2025, CR2032			
3005	.939 (23.9)	.475 (12.1)	.265 (6.7)	.156 (4.0)	.832 (21.1)	1.004 (25.5)		BR2320, CL2330, CR2320, BR2325, CR2325, DL2325			
3011	.939 (23.9)	.475 (12.1)	.351 (8.9)	.240 (6.1)	.819 (20.8)	1.004 (25.5)	24mm	CR2354, DL2354			
3033	1.000 (25.4)	.313 (8.0)	.176 (4.5)	.067 (1.7)	.681 (17.3)	1.055 (26.8)		BR2412, CR2412			
3007	1.000 (25.4)	.506 (12.9)	.265 (6.7)	.156 (4.0)	.918 (23.3)	1.055 (26.8)	24mm	CR2430, DL2430			
3009	1.000 (25.4)	.506 (12.9)	.350 (8.9)	.230 (5.8)	.890 (22.5)	1.059 (26.9)		CR2450, DL2450			
3039	1.000 (25.4)	.506 (12.9)	.450 (11.4)	.336 (8.5)	.890 (22.5)	1.059 (26.9)		CR2477, DL2477			



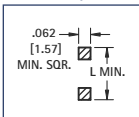
THRU HOLE MOUNT (THM)

## NEGATIVE BATTERY CONTACTS\*

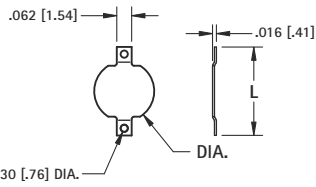
AVAILABLE ON TAPE AND REEL



- Assures proper contact



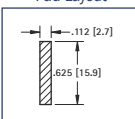
### COMPACT



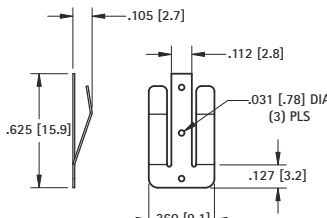
DWG. 1 MATERIAL: .008 (.20) Brass



- Assures proper contact



### SPRING CONTACT

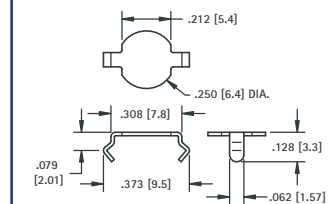


DWG. 2 MATERIAL: .010 (.25) Phosphor Bronze



### Thru Hole Mount

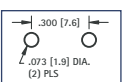
- Snap-In
- Assures proper contact



MATERIAL: .008 (.20) Phosphor Bronze, Tin-Nickel Plate

CAT. NO. 2990

### Mounting Detail



TIN-NICKEL PLATE		MATTE TIN PLATE		DWG.	L	DIA.	TAPE & REEL SPECS
CAT. NO. BULK	ON TAPE & REEL	CAT. NO. BULK	ON TAPE & REEL				
2991	2991TR	2981	2981TR	1	.368 (9.4)	.250 (6.4)	16mm wide, 8mm pitch, 1500/7 reel
2992	2992TR	2982	2982TR	1	.289 (7.4)	.186 (4.7)	16mm wide, 12mm pitch, 1000/7 reel
2993	2993TR	2983	2983TR	2	.625 (15.9)	-	24mm wide, 16mm pitch, 1000/13 reel

\*Note: Cannot be used with Cat. No. 3028, 3029, 3032, 3033.

12mm to 24mm COIN CELL RETAINERS