

Strengthening the link between the real and the digital world (/cms/en/about-infineon/company/cypress-acquisition/)

> Home (/cms/en/) > Products (/cms/en/product/) > Evaluation Boards (/cms/en/product/evaluation-boards/) > PROF_2 BTS7002-1EPP EB

PROF_2 BTS7002-1EPP EB

Overview

PROFET+2 12V BTS7002-1EPP EVALUATION BOARD

This Evaluation board comes with 1 high-side switch of BTS7002-1EPP. The purpose of this board is to provide a quick pick and place solution for costumers' lab evaluations. The Evaluation board is capable to drive resistive, capacitive and/or inductive loads.

Summary of Features

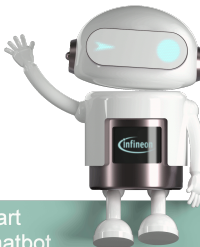
- High-Side Switch with Diagnosis and Embedded Protection
- Operating voltage range 3.1-28V with 3.3V and 5V compatible logic input
- **Protection:** current tripping, over-temperature, overvoltage, load dump, reverse polarity, short-circuit
- **Diagnosis:** load current sense output
- Optimized for design flexibility across the family by pin to pin and external components compatibility
- Miniaturization / Shrink of the PCB Area

Potential Applications

- Suitable for driving 21 A resistive, inductive and capacitive loads
- Drives electromechanical relays, fuses and discrete circuits
- Suitable for driving glow plug, heating elements, DC motor and for power distribution

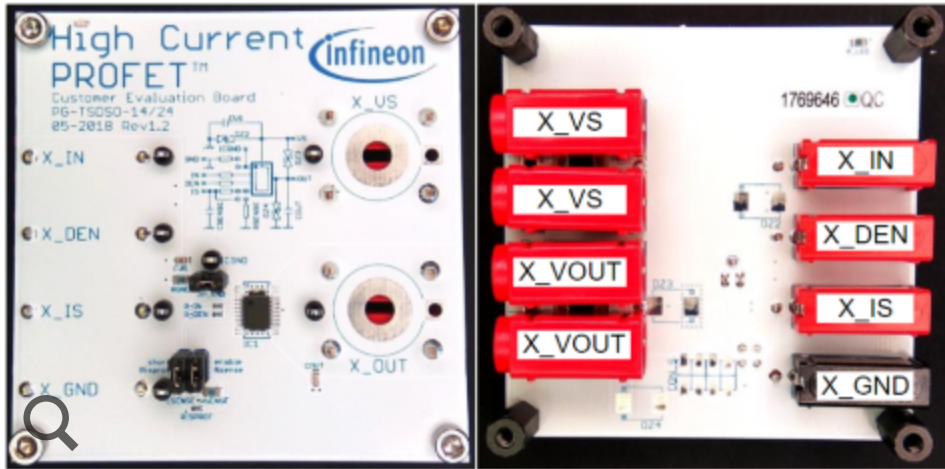
Benefits

- 50% reduced internal operating current consumption
- Simplified & cost efficient ground network
- Current sense accuracy (kILIS) $\leq 8\%$ @ nominal load current
- Benchmark cranking voltage capability able to work down to 3.1 V
- Smaller package size for area savings
- Very low output leakage current ($\leq 0.5 \mu\text{A}$ up to 85°C)



Start
Chatbot



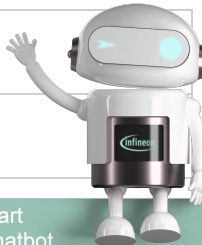


Parametrics

Parametrics	PROF_2 BTS7002-1EPP EB
Family	High Side Switch
Product Description	This Evaluation board comes with 1 high-side switch of BTS7002-1EPP. The purpose of this board is to provide a quick pick and place solution for costumers' lab evaluations. The Evaluation board is capable to drive resistive, capacitive and/or inductive loads.

Order

Sales Product Name	PROF_2 BTS7002-1EPP EB
OPN	PROF2BTS70021EPPEBTOB01
Product Status	active and preferred
Infineon Package name	--



Start
Chatbot

Standard Package name	PROF_2 BTS7002-1EPP EB
Sales Product Name	
Order online	
Completely lead free	
Halogen free	
RoHS compliant	no
Packing Size	1
Packing Type	CONTAINER
Moisture Level	
Moisture Packing	NON DRY

Support



Top 6 FAQs. Use the search bar above to show more!

Technical Support

In order to enable us to process your inquiry as efficiently as possible and ensure your case is duly reported, we kindly ask you to submit your request via the support form: <https://www.infineon.com/tac> (<https://www.infineon.com/tac>)

...

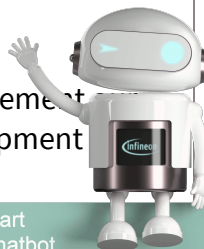


[+ Read more](#)

Partner Finder for support, software, hardware, dev tools, services

Infineon's partners offer products and services that complement semiconductor device solutions to accelerate your development efforts and time to market. You can find them here:

<https://www.infineon.com/partnerfinder>
<https://www.infineon.com/partnerfinder>.



Start
Chatbot

[+ Read more](#)

Package information

The package information is available on **our homepage** (<https://www.infineon.com/packages>). Please note, that they are divided into the subcategories “Leaded and through-hole”, “Surface Mounted Devices” and “Special Packages”. You will find all relevant package information at the option that applies.

[+ Read more](#)

Notes on processing

Information regarding reflow profile, soldering temperature, soldering profile and further processing notes for most of the discrete products are mentioned in the Application Note. Please visit <https://www.infineon.com/packages> (<https://www.infineon.com/packages>) and refer to the document...

[+ Read more](#)

Design-in support

We offer design-in support for your application. You can use our Infineon Solution Finder: <https://www.infineon.com/solutionFinder> (<https://www.infineon.com/solutionFinder>) Here you select the relevant parameters of your application and...

[+ Read more](#)

Simulation Parameters/SPICE models

Please visit our Simulation Model Finder on the internet at <https://www.infineon.com/simulation> (<https://www.infineon.com/simulation>) Please select "Simulation Models (SPICE, S-parameters, SABER)" ...

[+ Read more](#)

