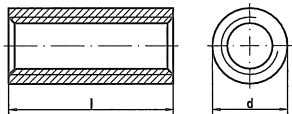


# Artikel 88089

Rundmuttern mit Trapezgewinde



Maße	TR 12x3	TR 14x4	TR 16x4	TR 18x4	TR 20x4	TR 22x5	TR 24x5
d	22	36	36	36	36	50	50
l	18	21	24	27	30	33	36

Maße	TR 26x5	TR 28x5	TR 30x6	TR 32x6	TR 36x6	TR 40x7	TR 44x7
d	50	60	60	60	75	75	75
l	39	42	45	48	54	60	66