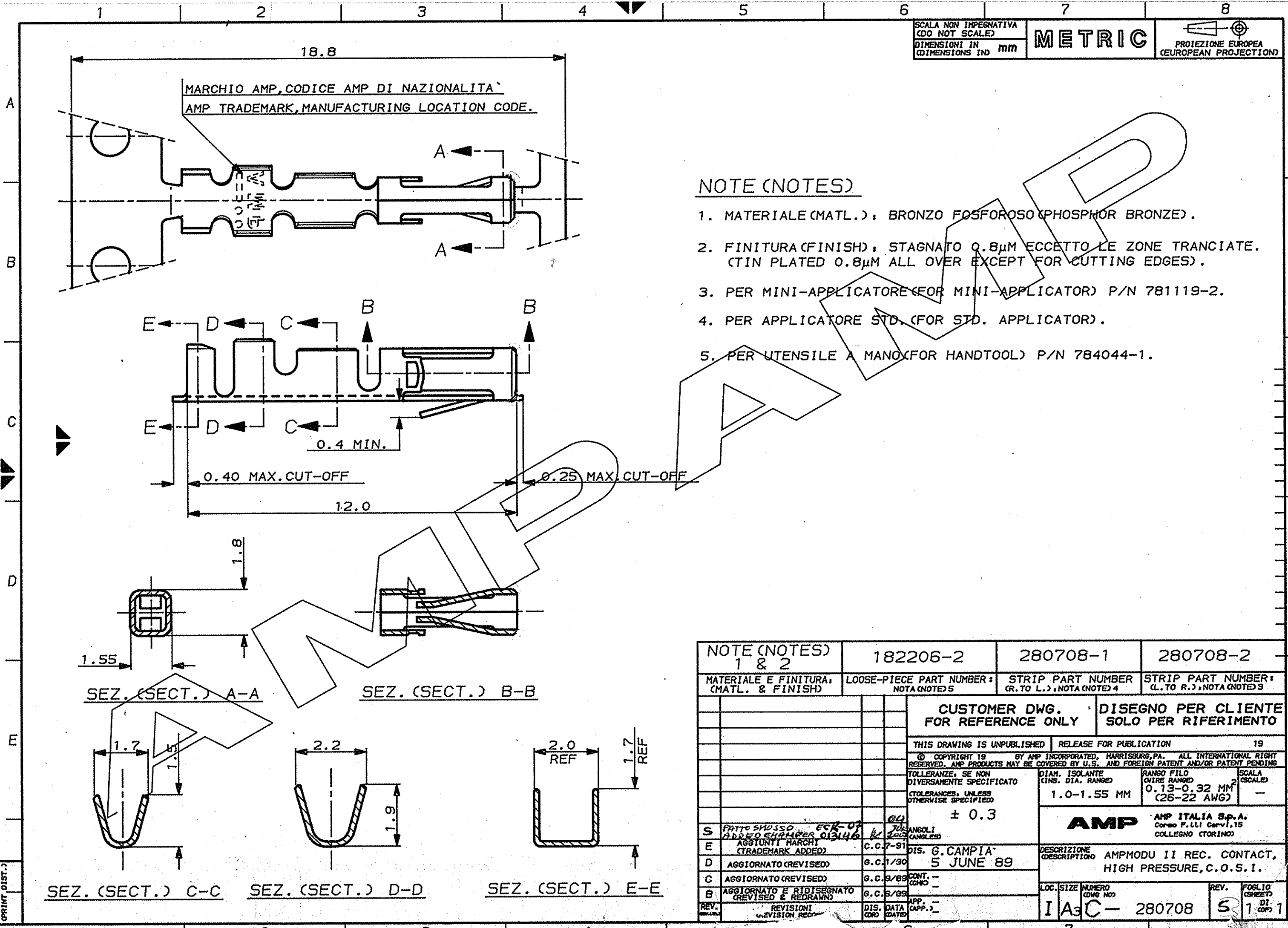


SCALA NON IMPEGNATIVA
(DO NOT SCALE)
DIMENSIONI IN mm
(DIMENSIONS IN mm)

METRIC

PROIEZIONE EUROPEA
(EUROPEAN PROJECTION)



NOTE (NOTES)

1. MATERIALE (MATL.): BRONZO FOSFOROSO (PHOSPHOR BRONZE).
2. FINITURA (FINISH): STAGNATO 0.8µM ECCETTO LE ZONE TRANCIAE. (TIN PLATED 0.8µM ALL OVER EXCEPT FOR CUTTING EDGES).
3. PER MINI-APPLICATORE (FOR MINI-APPLICATOR) P/N 781119-2.
4. PER APPLICATORE STD. (FOR STD. APPLICATOR).
5. PER UTENSILE A MANO (FOR HANDTOOL) P/N 784044-1.

NOTE (NOTES) 1 & 2	182206-2	280708-1	280708-2
MATERIALE E FINITURA (MATL. & FINISH)	LOOSE-PIECE PART NUMBER: (NOTA (NOTE) 5)	STRIP PART NUMBER (R. TO L.): (NOTA (NOTE) 4)	STRIP PART NUMBER: (L. TO R.): (NOTA (NOTE) 3)
		CUSTOMER DWG. FOR REFERENCE ONLY	DISEGNO PER CLIENTE SOLO PER RIFERIMENTO
		THIS DRAWING IS UNPUBLISHED	RELEASE FOR PUBLICATION 19
© COPYRIGHT 19 BY AMP INCORPORATED, HARRISBURG, PA. ALL INTERNATIONAL RIGHT RESERVED. AMP PRODUCTS MAY BE COVERED BY U.S. AND FOREIGN PATENT AND/OR PATENT PENDING			
		TOLLERANZE, SE NON DIVERSAMENTE SPECIFICATO (TOLERANCES, UNLESS OTHERWISE SPECIFIED)	± 0.3
		DIAM. ISOLANTE (INS. DIA. RANGED)	1.0-1.55 MM
		RANGO FILO (WIRE RANGED)	0.13-0.32 MM (26-22 AWG)
		SCALA (SCALED)	-
		AMP AMP ITALIA S.p.A. Corso F.lli Cervi, 15 COLLENO (TORINO)	
		DESCRIZIONE (DESCRIPTION)	AMP MODU II REC. CONTACT, HIGH PRESSURE, C.O.S.I.
		LOC. SIZE NUMERO (CONG. NO.)	I A3C - 280708
		REV. (REV.)	5
		FOLIO (SHEET)	1
		DI (DI)	1
		COP. (COP.)	1

DISTRIBUZIONE (PRINT DIST.)