

Bar grips

Application:

For automatic retightening of material on CNC lathe.

Execution:

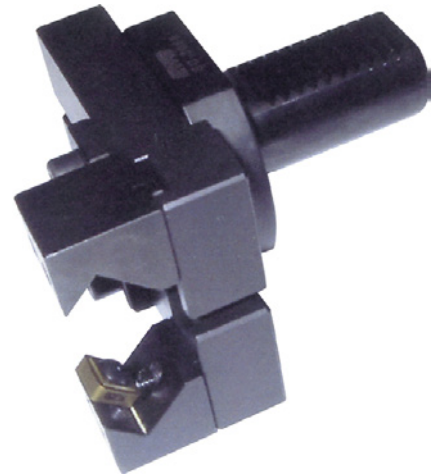
- For CNC lathes
- Replacement for bar loader

Advantage:

- For reliably pulling out workpiece length

Delivery:

With standard grabber attachments and cemented carbide plates.



Art. no.	22798 016
Brand	EWS
Manufacturer Part Number	108663
VDI mount diameter	16 mm
VDI shank length	32 mm
Clearance	28 mm
Projecting length	53 mm
Distance between stop and centre of hole	35 mm
Centre of post clearance	28 mm
Max. rod clamping diameter	22 mm
Distance 2	26.5 mm
Min. rod clamping diameter	2 mm
Post gripper height	74 mm
Left adjustment height	12.5 mm
Right adjustment height	28 mm
DIN	69880-1
Gross Weight	0.524 kg
Product Group	215