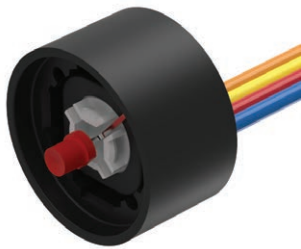


Data sheet Switching element.

Part No.: 84-8511.2640

Technical data



Terminal	Flat ribbon cable
Type of illumination	Single-Chip LED
Illuminative colour	Red
Operating voltage	24 V DC $\pm 10\%$
Operating voltage tolerance	$\pm 10\%$
Operation current	10 mA
Operating Travel	ca. 0.5 mm
Weight	0.015 kg
IP Protection	IP40 rear side, standard version, IP67 rear side, fully sealed version, with mounted actuator only.
Contact material	Gold-plated silver
Illumination colour	Red
Material	Plastic
Switching system	Short-travel element
Switching rating	42 V AC/DC @ 0,1 A
Contacts	1 NO
Operating force	4.0 N ± 0.2 N
Mechanical lifetime	≥ 1 Mio. cycles of operation

Hints

- LED and built-in resistor included
- Standard version: Cable length 300 mm with insulated ferrule, plug-in terminal 2.8 mm x 0.8 mm
- Other options on request: Customisation of cable and connectors, rear side fully sealed (IP 67)
- Protection degree (rear side): IP 40, upgrade to IP 67 with plug Part No. 84-900 possible. With applications where strong vibrations occur, the plugs may become loose
- Luminosity and wave length variations caused by LED manufacturing processes may cause slight differences regarding the illumination. The customer has to decide what resistor shall be used to the LED

Product attributes

- LED and built-in resistor included

Wiring diagrams

