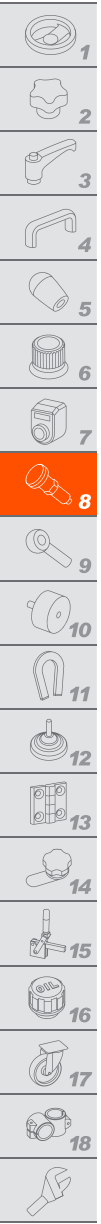


GN 113.10 | Quick release pins

AISI 630 stainless steel



PIN

AISI 630 hardened stainless steel.

BALLS

AISI 420C stainless steel.

SPRING

Stainless steel.

ROUND HANDLE AND PUSH BUTTON

AISI 316L stainless steel.

MAX. WORKING TEMPERATURE

175°C.

FEATURES AND APPLICATIONS

GN 113.10 quick release pins are generally used for quick fastenings between components or parts being machined, particularly when they must be frequently repositioned.

ACCESSORIES ON REQUEST

To optimise the use of these ball lock pins, have been designed:

- GN 111: ball chains (see page 816);
- GN 111.2: retaining cables (see page 817);
- GN 111.4: spiral retaining cables (see page 818).

SPECIAL EXECUTIONS ON REQUEST

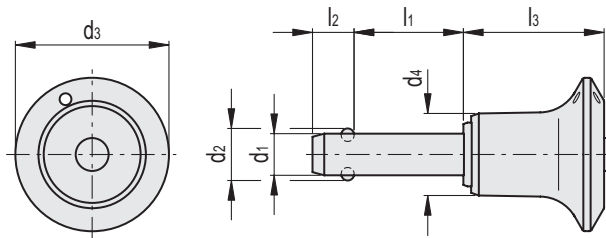
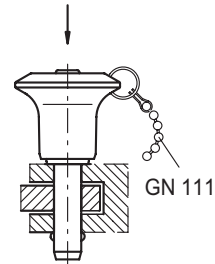
Other dimensions.

INSTRUCTIONS OF USE

Insert the quick release pin into the hole of the two parts to be locked, holding down the button that releases the two balls. To unlock the two parts, press the button which releases the balls and allows the quick release pin to be removed.




Application example



Code	Description	d1-0.04-0.08	d2	d3	d4	l1+0.6	l2±1	l3-0.2	Mounting hole H11	Double sided shearing force [kN]	⚖️
GN.13351	GN 113.10-5-10	5	5.5	23	10.2	10	6.2	20.2	5	24	23
GN.13352	GN 113.10-5-15	5	5.5	23	10.2	15	6.2	20.2	5	24	23
GN.13353	GN 113.10-5-20	5	5.5	23	10.2	20	6.2	20.2	5	24	24
GN.13354	GN 113.10-5-25	5	5.5	23	10.2	25	6.2	20.2	5	24	25
GN.13355	GN 113.10-5-30	5	5.5	23	10.2	30	6.2	20.2	5	24	25
GN.13356	GN 113.10-5-35	5	5.5	23	10.2	35	6.2	20.2	5	24	26
GN.13357	GN 113.10-5-40	5	5.5	23	10.2	40	6.2	20.2	5	24	27
GN.13358	GN 113.10-5-45	5	5.5	23	10.2	45	6.2	20.2	5	24	28
GN.13359	GN 113.10-5-50	5	5.5	23	10.2	50	6.2	20.2	5	24	28
GN.13360	GN 113.10-5-60	5	5.5	23	10.2	60	6.2	20.2	5	24	30
GN.13361	GN 113.10-5-70	5	5.5	23	10.2	70	6.2	20.2	5	24	31
GN.13362	GN 113.10-5-80	5	5.5	23	10.2	80	6.2	20.2	5	24	32

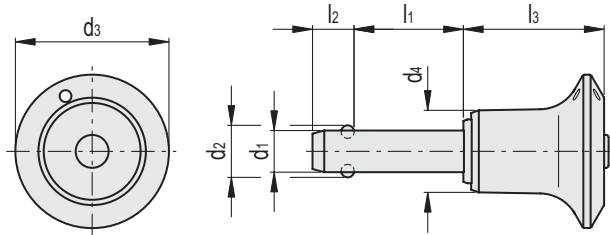
Indexing and positioning elements

INOX STAINLESS STEEL

Code	Description	d1-0.04-0.08	d2	d3	d4	l1+0.6	l2±1	l3-0.2	Mounting hole H11	Double sided shearing force [KN]	
GN.13371	GN 113.10-6-10	6	7	23	10.2	10	7.2	20.2	6	35	24
GN.13372	GN 113.10-6-15	6	7	23	10.2	15	7.2	20.2	6	35	25
GN.13373	GN 113.10-6-20	6	7	23	10.2	20	7.2	20.2	6	35	26
GN.13374	GN 113.10-6-25	6	7	23	10.2	25	7.2	20.2	6	35	27
GN.13375	GN 113.10-6-30	6	7	23	10.2	30	7.2	20.2	6	35	28
GN.13376	GN 113.10-6-35	6	7	23	10.2	35	7.2	20.2	6	35	26
GN.13377	GN 113.10-6-40	6	7	23	10.2	40	7.2	20.2	6	35	30
GN.13378	GN 113.10-6-45	6	7	23	10.2	45	7.2	20.2	6	35	31
GN.13379	GN 113.10-6-50	6	7	23	10.2	50	7.2	20.2	6	35	32
GN.13380	GN 113.10-6-60	6	7	23	10.2	60	7.2	20.2	6	35	34
GN.13381	GN 113.10-6-70	6	7	23	10.2	70	7.2	20.2	6	35	35
GN.13382	GN 113.10-6-80	6	7	23	10.2	80	7.2	20.2	6	35	37
GN.13391	GN 113.10-8-10	8	9.5	27	13.2	10	8.4	26.8	8	63	42
GN.13392	GN 113.10-8-15	8	9.5	27	13.2	15	8.4	26.8	8	63	43
GN.13393	GN 113.10-8-20	8	9.5	27	13.2	20	8.4	26.8	8	63	45
GN.13394	GN 113.10-8-25	8	9.5	27	13.2	25	8.4	26.8	8	63	48
GN.13395	GN 113.10-8-30	8	9.5	27	13.2	30	8.4	26.8	8	63	49
GN.13396	GN 113.10-8-35	8	9.5	27	13.2	35	8.4	26.8	8	63	51
GN.13397	GN 113.10-8-40	8	9.5	27	13.2	40	8.4	26.8	8	63	54
GN.13398	GN 113.10-8-45	8	9.5	27	13.2	45	8.4	26.8	8	63	55
GN.13399	GN 113.10-8-50	8	9.5	27	13.2	50	8.4	26.8	8	63	56
GN.13400	GN 113.10-8-60	8	9.5	27	13.2	60	8.4	26.8	8	63	60
GN.13401	GN 113.10-8-70	8	9.5	27	13.2	70	8.4	26.8	8	63	64
GN.13402	GN 113.10-8-80	8	9.5	27	13.2	80	8.4	26.8	8	63	68
GN.13403	GN 113.10-8-90	8	9.5	27	13.2	90	8.4	26.8	8	63	72
GN.13404	GN 113.10-8-100	8	9.5	27	13.2	100	8.4	26.8	8	63	76
GN.13411	GN 113.10-10-15	10	12	27	13.2	15	9.9	26.8	10	100	50
GN.13412	GN 113.10-10-20	10	12	27	13.2	20	9.9	26.8	10	100	63
GN.13413	GN 113.10-10-25	10	12	27	13.2	25	9.9	26.8	10	100	56
GN.13414	GN 113.10-10-30	10	12	27	13.2	30	9.9	26.8	10	100	58
GN.13415	GN 113.10-10-35	10	12	27	13.2	35	9.9	26.8	10	100	61
GN.13416	GN 113.10-10-40	10	12	27	13.2	40	9.9	26.8	10	100	64
GN.13417	GN 113.10-10-45	10	12	27	13.2	45	9.9	26.8	10	100	67
GN.13418	GN 113.10-10-50	10	12	27	13.2	50	9.9	26.8	10	100	69
GN.13419	GN 113.10-10-60	10	12	27	13.2	60	9.9	26.8	10	100	76
GN.13420	GN 113.10-10-70	10	12	27	13.2	70	9.9	26.8	10	100	82
GN.13421	GN 113.10-10-80	10	12	27	13.2	80	9.9	26.8	10	100	87
GN.13422	GN 113.10-10-90	10	12	27	13.2	90	9.9	26.8	10	100	92
GN.13423	GN 113.10-10-100	10	12	27	13.2	100	9.9	26.8	10	100	99
GN.13424	GN 113.10-10-110	10	12	27	13.2	110	9.9	26.8	10	100	105
GN.13425	GN 113.10-10-120	10	12	27	13.2	120	9.9	26.8	10	100	110
GN.13431	GN 113.10-12-20	12	14.5	31	16.4	20	10.9	32.7	12	144	83
GN.13432	GN 113.10-12-25	12	14.5	31	16.4	25	10.9	32.7	12	144	86
GN.13433	GN 113.10-12-30	12	14.5	31	16.4	30	10.9	32.7	12	144	91
GN.13434	GN 113.10-12-35	12	14.5	31	16.4	35	10.9	32.7	12	144	95
GN.13435	GN 113.10-12-40	12	14.5	31	16.4	40	10.9	32.7	12	144	99
GN.13436	GN 113.10-12-45	12	14.5	31	16.4	45	10.9	32.7	12	144	103
GN.13437	GN 113.10-12-50	12	14.5	31	16.4	50	10.9	32.7	12	144	108
GN.13438	GN 113.10-12-60	12	14.5	31	16.4	60	10.9	32.7	12	144	116
GN.13439	GN 113.10-12-70	12	14.5	31	16.4	70	10.9	32.7	12	144	124
GN.13440	GN 113.10-12-80	12	14.5	31	16.4	80	10.9	32.7	12	144	133
GN.13441	GN 113.10-12-90	12	14.5	31	16.4	90	10.9	32.7	12	144	141
GN.13442	GN 113.10-12-100	12	14.5	31	16.4	100	10.9	32.7	12	144	149
GN.13443	GN 113.10-12-110	12	14.5	31	16.4	110	10.9	32.7	12	144	158
GN.13444	GN 113.10-12-120	12	14.5	31	16.4	120	10.9	32.7	12	144	166



- 1
- 2
- 3
- 4
- 5
- 6
- 7
- 8
- 9
- 10
- 11
- 12
- 13
- 14
- 15
- 16
- 17
- 18



INOX STAINLESS STEEL

Code	Description	d1-0.04-0.08	d2	d3	d4	l1+0.6	l2±1	l3-0.2	Mounting hole H11	Double sided shearing force [kN]	
GN.13451	GN 113.10-16-30	16	19	38	23.4	30	14.5	42.6	16	257	204
GN.13452	GN 113.10-16-35	16	19	38	23.4	35	14.5	42.6	16	257	212
GN.13453	GN 113.10-16-40	16	19	38	23.4	40	14.5	42.6	16	257	219
GN.13454	GN 113.10-16-45	16	19	38	23.4	45	14.5	42.6	16	257	227
GN.13455	GN 113.10-16-50	16	19	38	23.4	50	14.5	42.6	16	257	235
GN.13456	GN 113.10-16-60	16	19	38	23.4	60	14.5	42.6	16	257	250
GN.13457	GN 113.10-16-70	16	19	38	23.4	70	14.5	42.6	16	257	265
GN.13458	GN 113.10-16-80	16	19	38	23.4	80	14.5	42.6	16	257	280
GN.13459	GN 113.10-16-90	16	19	38	23.4	90	14.5	42.6	16	257	295
GN.13460	GN 113.10-16-100	16	19	38	23.4	100	14.5	42.6	16	257	312
GN.13461	GN 113.10-16-110	16	19	38	23.4	110	14.5	42.6	16	257	326
GN.13462	GN 113.10-16-120	16	19	38	23.4	120	14.5	42.6	16	257	342
GN.13463	GN 113.10-16-130	16	19	38	23.4	130	14.5	42.6	16	257	357
GN.13464	GN 113.10-16-140	16	19	38	23.4	140	14.5	42.6	16	257	373
GN.13465	GN 113.10-16-150	16	19	38	23.4	150	14.5	42.6	16	257	388
GN.13471	GN 113.10-20-50	20	24.8	38	23.4	50	17.4	42.6	20	403	295
GN.13472	GN 113.10-20-60	20	24.8	38	23.4	60	17.4	42.6	20	403	318
GN.13473	GN 113.10-20-70	20	24.8	38	23.4	70	17.4	42.6	20	403	343
GN.13474	GN 113.10-20-80	20	24.8	38	23.4	80	17.4	42.6	20	403	367
GN.13475	GN 113.10-20-90	20	24.8	38	23.4	90	17.4	42.6	20	403	391
GN.13476	GN 113.10-20-100	20	24.8	38	23.4	100	17.4	42.6	20	403	415
GN.13477	GN 113.10-20-110	20	24.8	38	23.4	110	17.4	42.6	20	403	439
GN.13478	GN 113.10-20-120	20	24.8	38	23.4	120	17.4	42.6	20	403	463
GN.13479	GN 113.10-20-130	20	24.8	38	23.4	130	17.4	42.6	20	403	487
GN.13480	GN 113.10-20-140	20	24.8	38	23.4	140	17.4	42.6	20	403	511
GN.13481	GN 113.10-20-150	20	24.8	38	23.4	150	17.4	42.6	20	403	535
GN.13486	GN 113.10-25-50	25	30.8	50	30.4	50	22.3	54.3	25	631	547
GN.13487	GN 113.10-25-60	25	30.8	50	30.4	60	22.3	54.3	25	631	585
GN.13488	GN 113.10-25-70	25	30.8	50	30.4	70	22.3	54.3	25	631	623
GN.13489	GN 113.10-25-80	25	30.8	50	30.4	80	22.3	54.3	25	631	661
GN.13490	GN 113.10-25-90	25	30.8	50	30.4	90	22.3	54.3	25	631	697
GN.13491	GN 113.10-25-100	25	30.8	50	30.4	100	22.3	54.3	25	631	735
GN.13492	GN 113.10-25-110	25	30.8	50	30.4	110	22.3	54.3	25	631	774
GN.13493	GN 113.10-25-120	25	30.8	50	30.4	120	22.3	54.3	25	631	810
GN.13494	GN 113.10-25-130	25	30.8	50	30.4	130	22.3	54.3	25	631	847
GN.13495	GN 113.10-25-140	25	30.8	50	30.4	140	22.3	54.3	25	631	885
GN.13496	GN 113.10-25-150	25	30.8	50	30.4	150	22.3	54.3	25	631	922

Indexing and positioning elements