


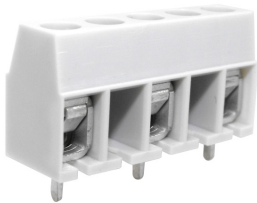


10mm Pitch Commercial Standard Profile Screw Terminal

- 1 Pole in 10mm & 15mm length
- 1-12 pole solid block
- Moulded in grey UL94-V0 flame retardant PC
- Wire protector terminals
- 0.5-4.0mm² (30-12AWG) solid cable
- 0.5-2.5mm² (30-12AWG) stranded cable
- Guided pin alignment
- Captive screws
- Anti solder wicking terminals
-    approved

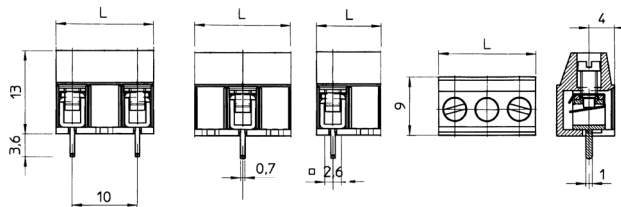
CTB2500



TYPE NO.	POLES	LENGTH
CTB2500/1	1	10mm
CTB2500/1/15	1	15mm
CTB2500/2	2	15mm
CTB2500/3	3	25mm
CTB2500/4	4	35mm
CTB2500/5	5	45mm

SPECIFICATION

Rating	24A/250V UL=18A/300V, VDE&IMQ=24A/250V
Dielectric strength	≥2.5kV
Impulse withstand voltage	6kV
Working temperature	85°C
Moulding	UL94-V0 flame retardant PC
Pin/terminal	Tinned, nickel plated brass
Wire protector	Tin plated, phosphor bronze
Screw/torque	M3 steel zinc plated, 0.5Nm
Recommended PCB hole size	ø1.3mm



- 1 - CTB2500/1
- 2 - CTB2500/1/15
- 3 - CTB2500/2



+44 (0)1638 716101
info@camdenboss.com
www.camdenboss.com

We operate a constant improvement policy,
our products are subject to change without notice.

Ver 1.0
Iss 1

CAMDEN BOSS
ELECTRONICS & ENCLOSURES