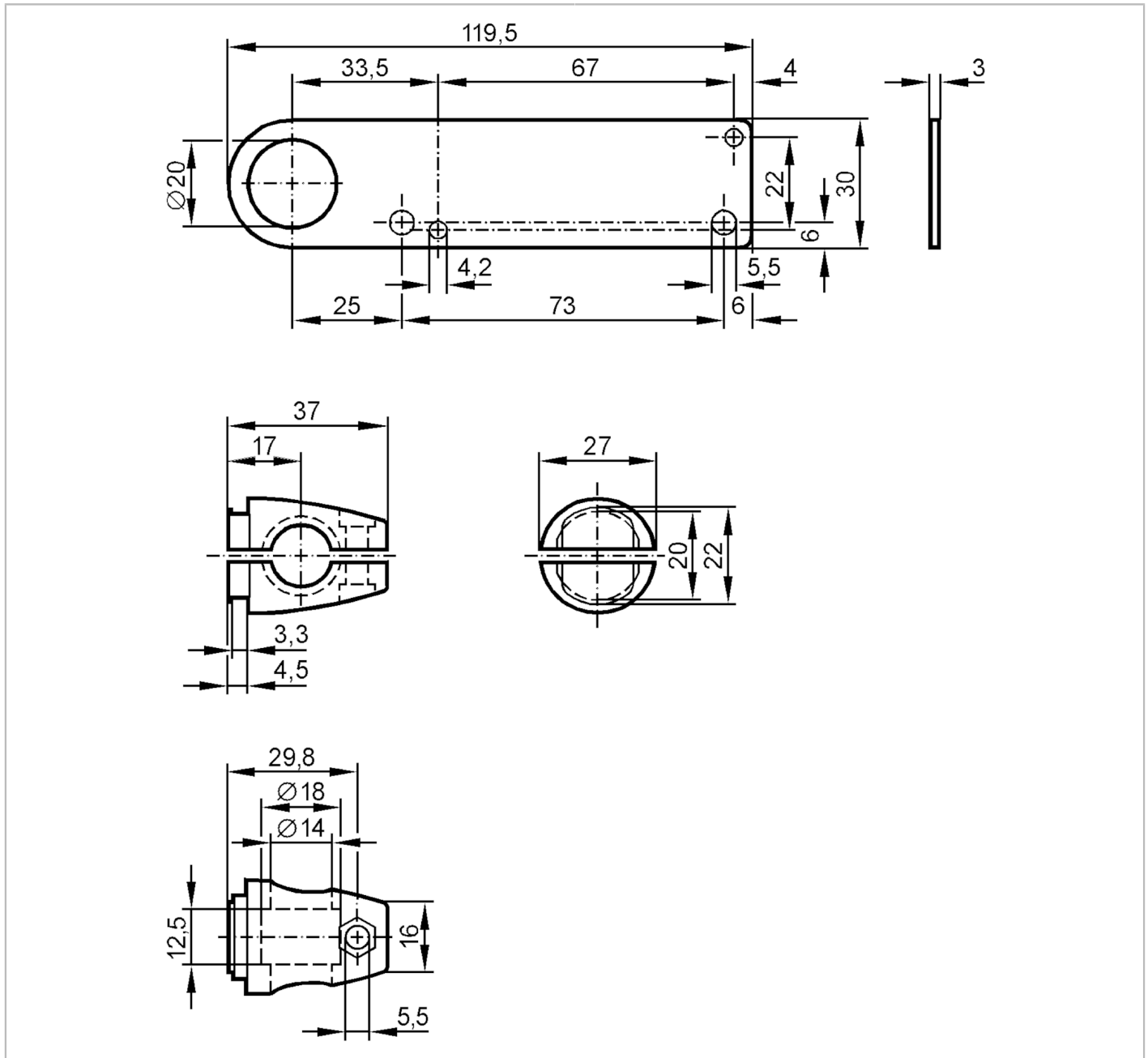




Mounting set for photoelectric sensors

SYSTEM COMPONENT OA BOLT



Application	
Design	clamp mounting
Mechanical data	
Weight	[g] 269
Type of mounting	free-standing; (M12)
Materials	fixture: stainless steel (1.4571/316Ti); Clamp: diecast zinc
Accessories	
Accessories (supplied)	screw: 1 x M12 x 55
Remarks	
Pack quantity	1 pcs.