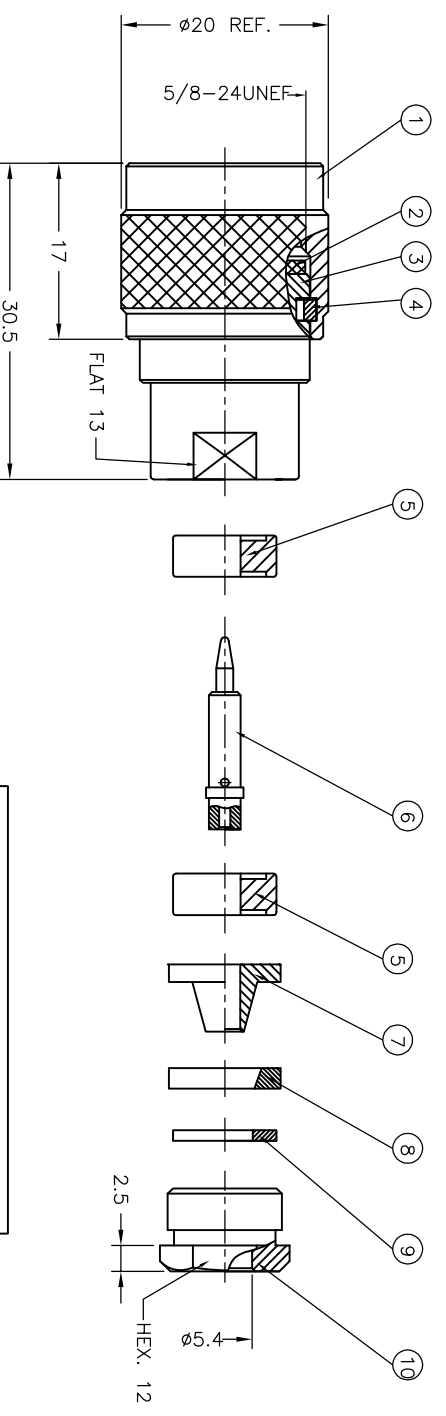


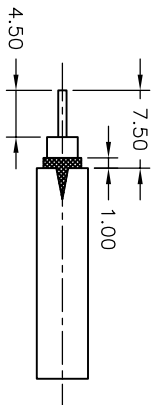
REVISIONS		DATE	DMN	APVD
P	LTR			
C	REVISE PER ECR-16-016997	19DEC2016	LN	RS



NOT  
RELEASED

**NOTES:**

- △ SINGLE PACKING: ONE CONNECTOR PER LABELED BAG PACKAGED. LABELED PER TEC-107-115
- △ Ag PLATING
- △ COLOR: WHITE
- 4 ELECTRICAL CHARACTERISTICS  
 FREQUENCY RANGE: DC - 6 GHz  
 NOMINAL IMPEDANCE: 50 Ohm  
 INSULATION RESISTANCE: 5000 MOhm  
 WORKING VOLTAGE: 1000 Volts RMS at Sea Level  
 DIELECTRIC WITHSTAND VOLTAGE: 1500 Volts RMS MAX  
 CONTACT RESISTANCE: 1.50 mohm MAX  
 CENTER CONTACT: 0.20 mohm MAX  
 OUTER CONTACT: 1.3 MAX  
 VSWR: 0.3 MAX  
 INSERTION LOSS:
- 5 MECHANICAL CHARACTERISTICS  
 DURABILITY: 500 Cycles MIN  
 CABLE RETENTION FORCE: 175N MIN
- 6 ENVIRONMENTAL CHARACTERISTICS  
 -65 to +165 DegC
- 7 FOR USE ON CABLES: RG58C/U, 141A/U, URM43, 76, BELDEN 9907
- 8 ALL DIMENSIONS ARE NOMINAL FOR REFERENCE ONLY UNLESS OTHERWISE STATED



RECOMMENDED CABLE  
STRIPPING LENGTH

QTY	DESCRIPTION	MATERIAL	PARTS LIST
1	BRASS NUT		10
1	BRASS WASHER		9
1	BRASS CLAMP RING		8
1	BRASS SLEEVE		7
1	BRASS CONTACT PIN		6
2	PTFE INSULATOR 1		5
1	PHOS BRONZE RING		4
1	BRASS BODY		3
1	SILICONE RUBBER GASKET		2
1	BRASS SHELL		1
1--0	MATERIAL DESCRIPTION		1

THIS DRAWING IS A CONTROLLED DOCUMENT.

DMN	21NOV2001	APVD	NAME
CHK	A.BEKEN	PRODUCT SPEC	TYPE N STRAIGHT PLUG SOLDER/PSO
R.G	21NOV2001	APPLICATION SPEC	RG58
		WEIGHT	50 Ohm

DIMENSIONS: mm

TOLERANCES UNLESS OTHERWISE SPECIFIED:	FINISH
0 P.L.C	± 0.3
1 P.L.C	± 0.3
2 P.L.C	± 0.2
3 P.L.C	±
4 P.L.C	±
ANGLES	± 5'

MATERIAL: -

CUSTOMER DRAWING: 0

SIZE: A3 00779

DRAWING NO: 1478419

RESTRICTED TO: -

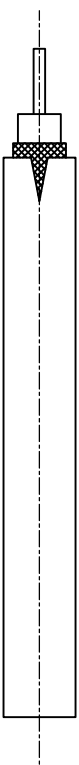
SCALE: NTS

SHEET: 1 of 2

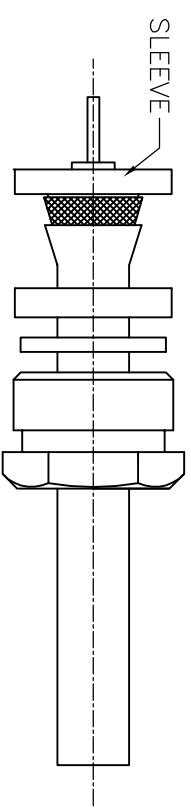
REV: C

# INSTRUCTION SHEET

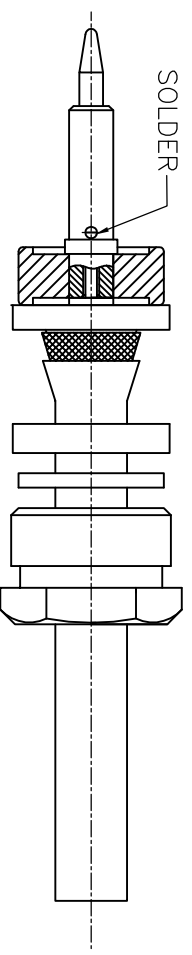
REVISIONS					
P	LTR	DESCRIPTION	DATE	DMN	APVD
-	-	SEE SHEET 1	-	-	-



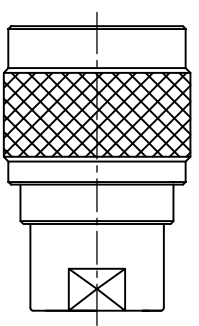
STEP 1:



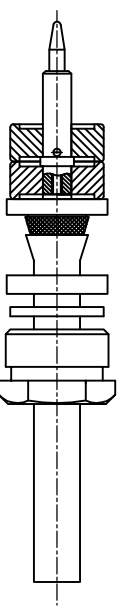
STEP 2:



STEP 3:

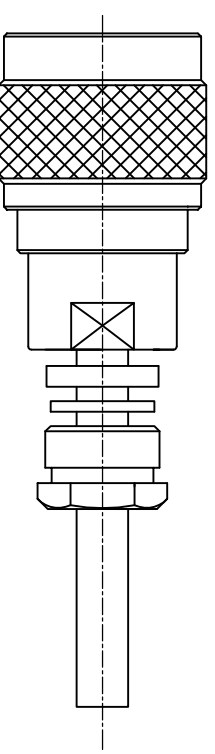


STEP 4:

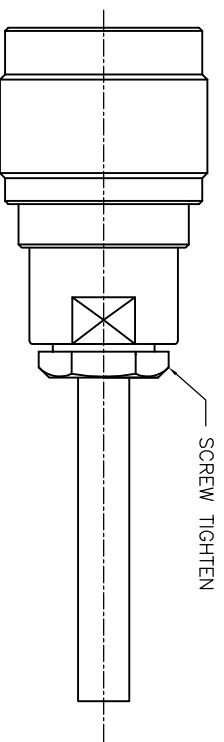


INSERT

STEP 5:



STEP 6:



SCREW TIGHTEN

A

B

C

D

THIS DRAWING IS A CONTROLLED DOCUMENT.

DIMENSIONS: mm  
 TOLERANCES UNLESS OTHERWISE SPECIFIED:

0 P.L.C.	± 0.3
1 P.L.C.	± 0.3
2 P.L.C.	± 0.2
3 P.L.C.	± -
4 P.L.C.	± -
ANGLES	± 5°
FINISH	-



MATERIAL

DMN 21NOV2001  
 A.BEKEN 21NOV2001  
 CHK R.G

APVD F. W.-KING 21NOV2001  
 PRODUCT SPEC

APPLICATION SPEC  
 WEIGHT 0

**STE** TE Connectivity

TYPE N STRAIGHT PLUG SOLDER(PSO)

RG58 50 Ohm

SIZE A3000779  
 DATE CODE G1478419  
 DRAWING NO. 1478419  
 RESTRICTED TO

CUSTOMER DRAWING SCALE NTS SHEET 2 of 2 REV C

A

B

C

D