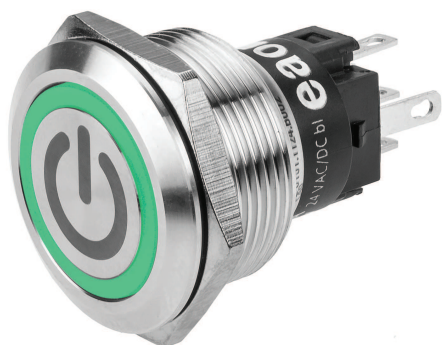


# EAO – Your Expert Partner for Human Machine Interfaces

82-6151.1134.B002 - Illuminated pushbutton 22 mm stainless-steel Stand-By Symbol

**82-6151.1134.B002 - Illuminated pushbutton 22 mm stainless-steel, momentary, Stand-By Symbol**



## Mounting

Mounting cut-out Ø 22,3 mm  
Design flush

## Front

Front dimension Ø 25 mm  
Front shape round  
Front ring shape flush  
Front bezel material Stainless steel

## Other Attributes

Operating voltage (LED) 24 V AC/DC  
Weight 0,018 kg  
Operation current (LED) 7 mA

## Operating-/Indication part

Lens optics opaque  
Lens material Stainless steel  
Lens profile flat  
Lens illumination illuminative  
Lens colour Stainless steel

## IP-Rating

Front protection IP65, IP67

## Connection Method

Terminal Solder 2.8 x 0.5 mm

## Actuator

Switching action Momentary

## Switching element

Switching current 3 A  
Contact material Silver  
Contacts 1 C  
Switching system Snap-action switching element  
Switching voltage 240 V AC/DC

## Illumination

Illumination Ring with green LED

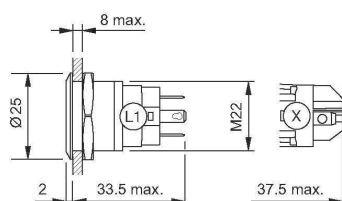
## Function

Illuminated pushbutton

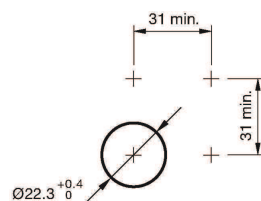
# EAO – Your Expert Partner for Human Machine Interfaces

82-6151.1134.B002 - Illuminated pushbutton 22 mm stainless-steel Stand-By Symbol

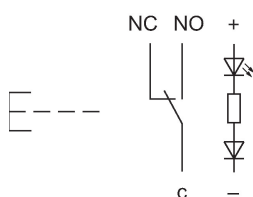
## Dimensions



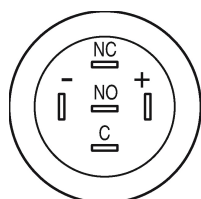
## Mounting cut-outs



## Wiring diagram



## Component layout



## Legend

Switching action: B = Momentary

Contacts: C = Changeover