

INTERCONNECTION

12 Way Nylon Terminal Strips

- Moulded from Natural PA6 (standard, CTSN400), Cream PA66 (CTSN500,) Grey PA66 Glass fibre (CTSN600)
- Available with or without wire protection
- UL94-V2 Self extinguishing as standard
- V0 types pass 960°C glow-wire test
- Easily cut to size
- Can also be supplied pre-cut
- Can be printed on request
- Closed inserts (middle barrier) option
- Captive terminal screws
- CE, RoHS, REACH & UL approvals



SPECIFICATION

| | | |
|---------------------|-------------------------|-------------------|
| Voltage | CTSN431-433 | 450VAC |
| | CTSN434-438 | 750VAC (UL600VAC) |
| Working temperature | CTSN400 | -30°C to +110°C |
| | CTSN500 | -30°C to +110°C |
| | CTSN600 | -5°C to +180°C |
| Moulding | CTSN400 | UL94-V2 PA6 |
| | CTSN500 | UL94-V0 PA66 |
| | CTSN600 | UL94-V0 PA66 + GF |
| Standard insert | Nickel-plated brass | |
| Terminal screws | Zinc-plated steel CQ-15 | |
| Wire protectors | Stainless steel | |

Part Numbers shown are for standard PA6 material (e.g. CTSN433/12)

For CTSN500 PA66 material change first number to 5 (e.g. CTSN533/12)

For CTSN600 PA66+GF material change first number to 6 (e.g. CTSN633/12)

Standard Type

| TYPE NO. | PITCH / UL WIRE | | INSERT DIAMETER | CABLE ACCEPTANCE | TERMINAL SCREWS | LENGTH | WIDTH | HEIGHT | PITCH | FIXING HOLE DIAMETER | MAX CURRENT |
|-------------|-----------------|------------|-----------------|---------------------------|-----------------|--------|-------|--------|--------|----------------------|-------------|
| | RATING | PROTECTION | | | | | | | | | |
| CTSN431/12W | 8mm/20A | No | 3.2mm | 4.0mm ² /12AWG | M3 | 94mm | 18mm | 15.5mm | 8mm | 2.8mm | 32A |
| CTSN431/12 | 8mm/15A | Yes | 3.2mm | 2.5mm ² /14AWG | M3 | 94mm | 18mm | 15.5mm | 8mm | 2.8mm | 32A |
| CTSN433/12W | 10mm/30A | No | 3.5mm | 6.0mm ² /10AWG | M3 | 116mm | 21mm | 16mm | 9.95mm | 2.8mm | 41A |
| CTSN433/12 | 10mm/20A | Yes | 3.5mm | 4.0mm ² /12AWG | M3 | 116mm | 21mm | 16mm | 9.95mm | 2.8mm | 41A |
| CTSN434/12W | 12mm/50A | No | 4.4mm | 10.0mm ² /8AWG | M3.5 | 140mm | 23mm | 18.5mm | 12mm | 2.8mm | 57A |
| CTSN434/12 | 12mm/30A | Yes | 4.4mm | 6.0mm ² /10AWG | M3.5 | 140mm | 23mm | 18.5mm | 12mm | 2.8mm | 57A |
| CTSN435/12W | 14mm/65A | No | 6.0mm | 16.0mm ² /6AWG | M4 | 166mm | 29mm | 23mm | 14mm | 3.5mm x 6.4 slot | 76A |
| CTSN435/12 | 14mm/65A | Yes | 6.0mm | 10.0mm ² /8AWG | M4 | 166mm | 29mm | 23mm | 14mm | 3.5mm x 6.4 slot | 76A |
| CTSN438/12W | 15mm/85A | No | 7.5mm | 25.0mm ² /4AWG | M5 | 180mm | 31mm | 27.5mm | 15mm | 3.4mm | 101A |

Raised Base

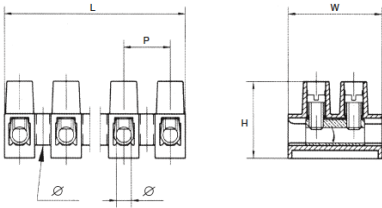
| TYPE NO. | PITCH / UL WIRE | | INSERT DIAMETER | CABLE ACCEPTANCE | TERMINAL SCREWS | LENGTH | WIDTH | HEIGHT | PITCH | FIXING HOLE DIAMETER | MAX CURRENT |
|--------------|-----------------|------------|-----------------|---------------------------|-----------------|--------|-------|--------|-------|----------------------|-------------|
| | RATING | PROTECTION | | | | | | | | | |
| CTSN431/12WR | 8mm/20A | No | 3.2mm | 4.0mm ² /12AWG | M3 | 94mm | 18mm | 17.2mm | 8mm | 2.8mm | 32A |
| CTSN431/12R | 8mm/20A | Yes | 3.2mm | 2.5mm ² /14AWG | M3 | 94mm | 18mm | 17.2mm | 8mm | 2.8mm | 32A |
| CTSN433/12WR | 10mm/30A | No | 3.5mm | 6.0mm ² /10AWG | M3 | 116mm | 21mm | 17.8mm | 10mm | 2.8mm | 41A |
| CTSN433/12R | 10mm/30A | Yes | 3.5mm | 4.0mm ² /12AWG | M3 | 116mm | 21mm | 17.8mm | 10mm | 2.8mm | 41A |
| CTSN434/12WR | 12mm/50A | No | 4.4mm | 10.0mm ² /8AWG | M3.5 | 140mm | 23mm | 20.5mm | 12mm | 2.8mm | 57A |
| CTSN434/12R | 12mm/50A | Yes | 4.4mm | 6.0mm ² /10AWG | M3.5 | 140mm | 23mm | 20.5mm | 12mm | 2.8mm | 57A |
| CTSN435/12WR | 14mm/65A | No | 6.0mm | 16.0mm ² /6AWG | M4 | 166mm | 29mm | 25.8mm | 14mm | 3.5mm x 6.4 slot | 76A |
| CTSN435/12R | 14mm/65A | Yes | 6.0mm | 10.0mm ² /8AWG | M4 | 166mm | 29mm | 25.8mm | 14mm | 3.5mm x 6.4 slot | 76A |

Alternative Options

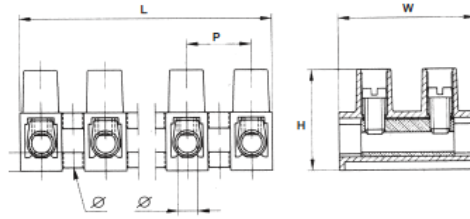
| TYPE NO. | PITCH / UL WIRE | | INSERT DIAMETER | CABLE ACCEPTANCE | TERMINAL SCREWS | LENGTH | WIDTH | HEIGHT | PITCH | FIXING HOLE DIAMETER | MAX CURRENT |
|---------------|-----------------|------------|-----------------|---------------------------|-----------------|--------|-------|--------|----------|----------------------|-------------|
| | RATING | PROTECTION | | | | | | | | | |
| CTSN433/12WL | 10mm/30A | No | 3.5mm | 6.0mm ² /10AWG | M3 | 116mm | 31mm | 16.8mm | 10mm | 2.8mm | 41A |
| CTSN433/12L | 10mm/30A | Yes | 3.5mm | 4.0mm ² /12AWG | M3 | 116mm | 31mm | 16.8mm | 10mm | 2.8mm | 41A |
| CTSN433/12WLC | 10mm/30A | No | 3.5mm | 6.0mm ² /10AWG | M3 | 116mm | 31mm | 21.5mm | 10mm | 2.8mm | 41A |
| CTSN433/12LC | 10mm/30A | Yes | 3.5mm | 4.0mm ² /12AWG | M3 | 116mm | 21mm | 17.6mm | 9.95mm | 3.6mm | 41A |
| CTSN433/12WS | 10mm/30A | No | 3.5mm | 6.0mm ² /10AWG | M3 | 116mm | 21mm | 17.3mm | 10mm pin | 3.5mm drill | 41A |
| CTSN433/12S | 10mm/30A | Yes | 3.5mm | 4.0mm ² /12AWG | M3 | 116mm | 21mm | 17.3mm | 10mm pin | 3.5mm drill | 41A |
| CTSN433/12WQ | 10mm/30A | No | 3.5mm | 6.0mm ² /10AWG | M3 | 116mm | 21mm | 18.1mm | 9.95mm | 2.8mm | 41A |
| CTSN433/12Q | 10mm/30A | Yes | 3.5mm | 4.0mm ² /12AWG | M3 | 116mm | 21mm | 18.1mm | 9.95mm | 2.8mm | 41A |

INTERCONNECTION

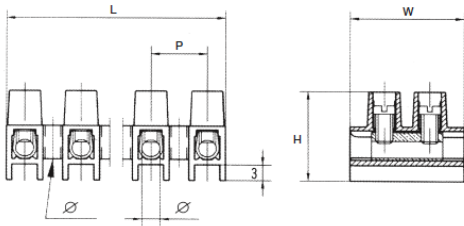
Standard type, no wire protection



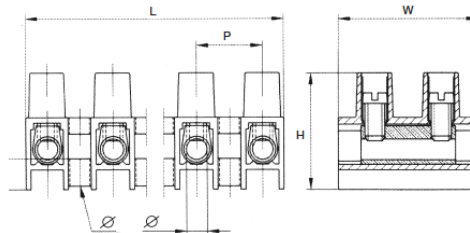
CTSN433/12T fast fixing hole between poles



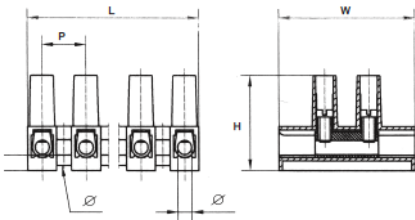
Raised base types - provides increased isolation



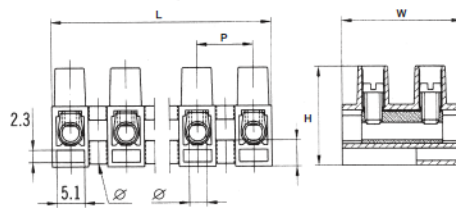
CTSN433/12TR fast fixing hole between poles and raised base



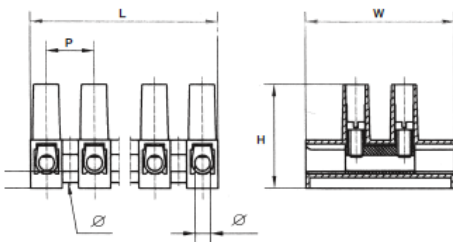
CTSN433/12LC larger isolating surface per pole and screw tower.
Complies with EN60598/1 4.7 and 11.2



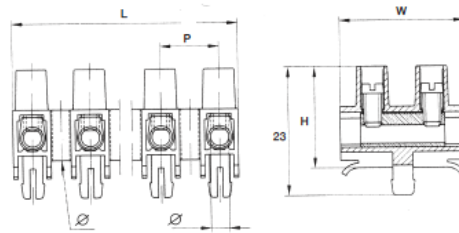
CTSN433/12TRG fast fixing hole between poles, raised base and socket in the base



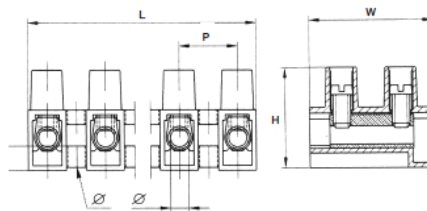
CTSN433/12L larger isolating surface per pole (750V, test voltage 3,000V)
Complies with EN60598/1 4.7 and 11.2



CTSN433/12S fixing pin



CTSN433/12Q fixing hole between poles and wide base terminal connection



PCB
TERMINAL
BLOCKS

INTER-
CONNECTION

FUSES &
FUSE-
HOLDERS

LEDs &
INDICATORS

MINIATURE
SWITCHES

LIMIT &
SAFETY
SWITCHES

CONTROL
PRODUCTS

INTERFACE
MODULES &
SUPPORTS

RELAY
BASES

ENCLOSURES

BATTERIES

TRANS-
FORMERS

