

CCMW indexable insert, positive

ATORN®

Application

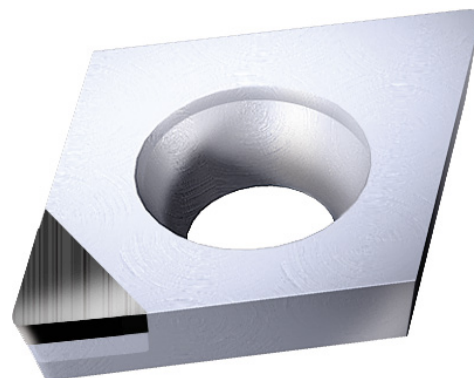
For longitudinal and face turning under good operating conditions at low cutting depths in the material groups non-ferrous metals, (special alloys).

Version

- Ground PKD indexable insert

Advantage

- Very high wear resistance, optimised for continuous cutting



Art. no.	17871 900
Shape of indexable insert ISO	C
Clearance angle of indexable insert ISO	C
Tolerance class of indexable insert ISO	G
Indexable insert type ISO	W
Size of indexable insert ISO	06
Thickness of indexable insert ISO	02
Corner radius of indexable insert ISO	08
ISO name	CCGW 060208
Cutting material	PCD
Type of cutting material	ADC,neutral
ISO-Code Rotating	CCGW 060208
Machining conditions for indexable insert	Good
Design of the chamfer	Neutral
Materials group	N (primary application)

EAN-Code

4050293400700

