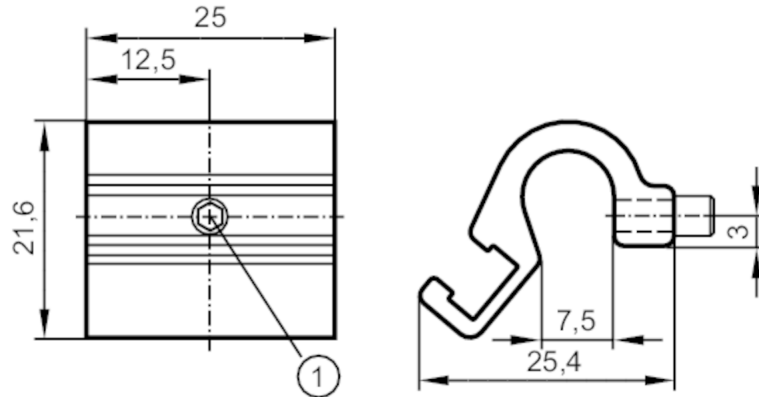


E11912



Mounting adapter for tie-rod/integrated profile cylinders

ADAPT TIE ROD CYL D5-7



1 Mounting screw SW 2

Application	
Design	for types MKT
Mechanical data	
Weight [g]	11.5
Materials	aluminium; screw: stainless steel
Clamping range [mm]	5...7
Accessories	
Accessories (supplied)	Mounting screw: 1
Remarks	
Pack quantity	1 pcs.