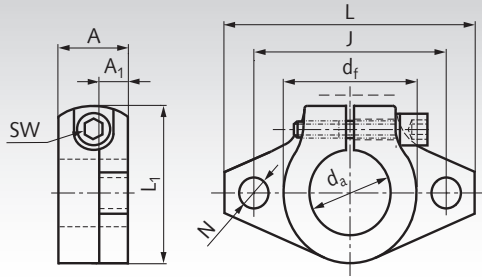


Flange Shaft Block GWFL universal use



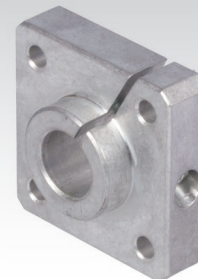
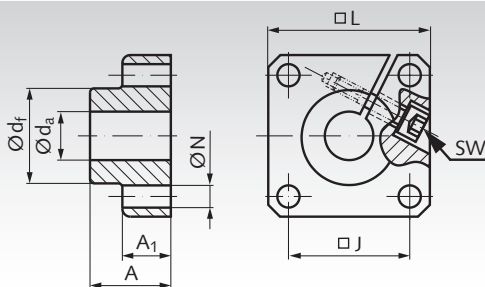
Material: Extruded Aluminium.
Clamp screw strength 8.8, Steel zinc-plated.

Universal use shaft blocks,
e.g. for flange fastening of guide shafts.

Ordering Details: e.g.: Product No. 646 405 10, Flange Shaft Block GWFL, for Shaft-Ø 10 mm

Product No.	d _a mm	L mm	A mm	A ₁ mm	d _f mm	J mm	L ₁ mm	N mm	Clamp- screw DIN 912	sw mm	Weight g
646 405 10	10	43	10	5	20	32	24	5,5	M4	3	13
646 405 12	12	47	13	7	25	36	28	5,5	M4	3	20
646 405 14	14	47	13	7	25	36	28	5,5	M4	3	18
646 405 16	16	50	16	8	28	40	31	5,5	M4	3	27
646 405 20	20	60	20	8	34	48	37	7	M5	4	40
646 405 25	25	70	25	10	40	56	42	7	M5	4	60
646 405 30	30	80	30	12	46	64	50	9	M6	5	110
646 405 40	40	105	40	16	56	80	67	12	M10	8	510
646 405 50	50	122	50	19	70	96	83	14	M12	10	890

Flange Shaft Blocks GWF universal use



Material: Extruded aluminium.
Clamp screw strength 8.8, steel zinc-plated.

Universal use shaft blocks,
e.g. for flange connection of guide shafts.

Ordering Details: e.g.: Product No. 646 401 12, Flange Blocks for Shaft-Ø 12 mm

Product No.	d _a mm	L mm	A mm	A ₁ mm	d _f mm	J mm	N ^{H13} mm	Clamp- screw DIN 912	sw mm	Weight g
646 401 12	12	40	20	12	23,5	30 ^{±0,12}	5,5	M4	3	60
646 401 16	16	50	20	12	27,5	35 ^{±0,12}	5,5	M4	3	80
646 401 20	20	50	23	14	33,5	38 ^{±0,15}	6,6	M5	4	100
646 401 25	25	60	25	16	42,0	42 ^{±0,15}	6,6	M6	5	150
646 401 30	30	70	30	19	49,5	54 ^{±0,25}	9,0	M8	6	300
646 401 40	40	100	40	26	65,0	68 ^{±0,25}	11,0	M10	8	700
646 401 50	50	100	50	36	75,0	75 ^{±0,25}	11,0	M10	8	1200