



Quality Products. Service Excellence.

Type 4X/ 6P Diecast Aluminum Enclosures 1590Z Series

Watertight, Thick Wall, UL Listed

Key Features:

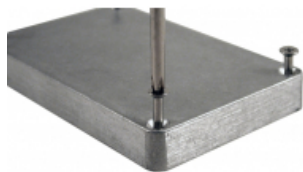
- Rugged, diecast aluminum alloy electronic instrument enclosure.
- Two piece tongue and groove construction with a replaceable one piece silicone rubber gasket provides protection against ingress of dust and water. Gasket supplied loose inside the enclosure (not pre-installed).
- Gasket has a temperature rating of -40C to +150C (-40F to 302F).
- Ideal for repetitive opening and closing.
- Four recessed stainless steel machine screws secure lid into tapped holes.
- Easy to wall mount using blind through hole construction, located outside of gasket protection.
- Lid screws are self-captivating and create threads on first installation, excluding **1590Z060**, **1590Z061**, **1590Z062**, and **1590Z063** models.
- Designed to meet IP68.
- North American Mark of Safety - cUL & UL listed. Certified to Type 4, 4X, 6, 6P.
- All sizes except 1590Z060** carry an impact rating of IK08 per IEC62262.
- 16 gauge galvanized steel inner panels are optional and available for most sizes.
- Painted versions are painted inside and out with a tough powder paint. Choice of textured black or smooth gray (RAL 7001).
- For non-metallic (glass reinforced polyester) versions of these enclosures, see series **1590ZGRP**



Photos

Available unfinished or powder coated in textured black or smooth gray.





Lid screws are self capturing (lid is threaded with first installation of screws).

Lid screws and wall mounting holes are outside the gasket channel.

Inner panels are available for most sizes and are sold separately.

Accessories

- Pole Mount Kit
- Breather Kit
- Liquid-Tight, Strain Relief Cordgrips
- Pressure Compensation Plug
- Small Rainproof Ventilator

Enclosure

| Part Number | Color | Internal | | Total | | | Lid | Extra Lid Screws | Inner Panel | Extra Panel Screws | Replacement Gasket |
|-------------|---------|----------------|--------|-------|-------|-------|---------------|------------------|-------------|--------------------|--------------------|
| | | Mounting Shelf | Length | Width | Depth | Depth | Depth | | | | |
| 1590Z060 | Natural | NO | 1.98 | 1.77 | 1.20 | 0.24 | SC1550Z103-50 | | SCG060-50 | 1590Z060G | |
| 1590Z060BK | Black | NO | 1.98 | 1.77 | 1.20 | 0.24 | SC1550Z103-50 | | SCG060-50 | 1590Z060G | |
| 1590Z060GY | Gray | NO | 1.98 | 1.77 | 1.20 | 0.24 | SC1550Z103-50 | | SCG060-50 | 1590Z060G | |
| 1590Z061 | Natural | NO | 2.51 | 2.29 | 1.39 | 0.20 | SC1550Z103-50 | | SCG060-50 | 1590Z061G | |
| 1590Z061BK | Black | NO | 2.51 | 2.29 | 1.39 | 0.20 | SC1550Z103-50 | | SCG060-50 | 1590Z061G | |
| 1590Z061GY | Gray | NO | 2.51 | 2.29 | 1.39 | 0.20 | SC1550Z103-50 | | SCG060-50 | 1590Z061G | |
| 1590Z100 | Natural | YES | 2.94 | 3.14 | 2.05 | 0.47 | SC576-50 | 1590Z100PL | SCGM4-50 | 1590Z100G | |
| 1590Z100BK | Black | YES | 2.94 | 3.14 | 2.05 | 0.47 | SC576-50 | 1590Z100PL | SCGM4-50 | 1590Z100G | |
| 1590Z100GY | Gray | YES | 2.94 | 3.14 | 2.05 | 0.47 | SC576-50 | 1590Z100PL | SCGM4-50 | 1590Z100G | |
| 1590Z110 | Natural | NO | 2.94 | 3.14 | 2.05 | 0.47 | SC576-50 | | SCGM4-50 | 1590Z100G | |
| 1590Z110BK | Black | NO | 2.94 | 3.14 | 2.05 | 0.47 | SC576-50 | | SCGM4-50 | 1590Z100G | |
| 1590Z110GY | Gray | NO | 2.94 | 3.14 | 2.05 | 0.47 | SC576-50 | | SCGM4-50 | 1590Z100G | |
| 1590Z062 | Natural | NO | 3.87 | 2.54 | 1.35 | 0.36 | SC1550Z103-50 | | SCG060-50 | 1590Z062G | |
| 1590Z062BK | Black | NO | 3.87 | 2.54 | 1.35 | 0.36 | SC1550Z103-50 | | SCG060-50 | 1590Z062G | |
| 1590Z062GY | Gray | NO | 3.87 | 2.54 | 1.35 | 0.36 | SC1550Z103-50 | | SCG060-50 | 1590Z062G | |
| 1590Z080 | Natural | YES | 3.94 | 3.94 | 3.15 | 0.79 | SC576-50 | 1590Z080PL | SCGM4-50 | 1590Z080G | |
| 1590Z080BK | Black | YES | 3.94 | 3.94 | 3.15 | 0.79 | SC576-50 | 1590Z080PL | SCGM4-50 | 1590Z080G | |
| 1590Z080GY | Gray | YES | 3.94 | 3.94 | 3.15 | 0.79 | SC576-50 | 1590Z080PL | SCGM4-50 | 1590Z080G | |
| 1590Z119 | Natural | YES | 4.80 | 4.72 | 3.23 | 0.81 | SC564-12 | 1590Z119PL | SCGM6-20 | 1590Z119G | |
| 1590Z119BK | Black | YES | 4.80 | 4.72 | 3.23 | 0.81 | SC564-12 | 1590Z119PL | SCGM6-20 | 1590Z119G | |
| 1590Z119GY | Gray | YES | 4.80 | 4.72 | 3.23 | 0.81 | SC564-12 | 1590Z119PL | SCGM6-20 | 1590Z119G | |
| 1590Z120 | Natural | YES | 4.94 | 3.17 | 2.31 | 0.61 | SC1550Z107-50 | 1590Z120PL | SCGM4-50 | 1590Z120G | |
| 1590Z120BK | Black | YES | 4.94 | 3.17 | 2.31 | 0.61 | SC1550Z107-50 | 1590Z120PL | SCGM4-50 | 1590Z120G | |
| 1590Z120GY | Gray | YES | 4.94 | 3.17 | 2.31 | 0.61 | SC1550Z107-50 | 1590Z120PL | SCGM4-50 | 1590Z120G | |
| 1590Z090 | Natural | YES | 5.51 | 5.51 | 3.54 | 1.18 | SC564-12 | 1590Z090PL | SCGM6-20 | 1590Z090G | |
| 1590Z090BK | Black | YES | 5.51 | 5.51 | 3.54 | 1.18 | SC564-12 | 1590Z090PL | SCGM6-20 | 1590Z090G | |
| 1590Z090GY | Gray | YES | 5.51 | 5.51 | 3.54 | 1.18 | SC564-12 | 1590Z090PL | SCGM6-20 | 1590Z090G | |
| 1590Z063 | Natural | NO | 5.91 | 2.53 | 1.43 | 0.40 | SC1550Z103-50 | | SCG060-50 | 1590Z063G | |
| 1590Z063BK | Black | NO | 5.91 | 2.53 | 1.43 | 0.40 | SC1550Z103-50 | | SCG060-50 | 1590Z063G | |
| 1590Z063GY | Gray | NO | 5.91 | 2.53 | 1.43 | 0.40 | SC1550Z103-50 | | SCG060-50 | 1590Z063G | |

| Part Number | Color | Internal | | Total | | | Lid | Extra Lid Screws | Inner Panel | Extra Panel Screws | Replacement Gasket |
|-------------|---------|----------------|--------|-------|-------|-------|----------|------------------|-------------|--------------------|--------------------|
| | | Mounting Shelf | Length | Width | Depth | Depth | Depth | | | | |
| 1590Z160 | Natural | YES | 6.30 | 6.30 | 3.53 | 0.79 | SC564-12 | 1590Z160PL | SCGM6-20 | 1590Z160G | |
| 1590Z160BK | Black | YES | 6.30 | 6.30 | 3.53 | 0.79 | SC564-12 | 1590Z160PL | SCGM6-20 | 1590Z160G | |
| 1590Z160GY | Gray | YES | 6.30 | 6.30 | 3.53 | 0.79 | SC564-12 | 1590Z160PL | SCGM6-20 | 1590Z160G | |
| 1590Z130 | Natural | NO | 6.89 | 3.15 | 2.05 | 0.47 | SC576-50 | | SCGM4-50 | 1590Z130G | |
| 1590Z130BK | Black | NO | 6.89 | 3.15 | 2.05 | 0.47 | SC576-50 | | SCGM4-50 | 1590Z130G | |
| 1590Z130GY | Gray | NO | 6.89 | 3.15 | 2.05 | 0.47 | SC576-50 | | SCGM4-50 | 1590Z130G | |
| 1590Z135 | Natural | NO | 6.89 | 3.15 | 2.36 | 0.79 | SC574-30 | | SCGM4-50 | 1590Z130G | |
| 1590Z135BK | Black | NO | 6.89 | 3.15 | 2.36 | 0.79 | SC574-30 | | SCGM4-50 | 1590Z130G | |
| 1590Z135GY | Gray | NO | 6.89 | 3.15 | 2.36 | 0.79 | SC574-30 | | SCGM4-50 | 1590Z130G | |
| 1590Z137 | Natural | YES | 7.87 | 3.15 | 2.36 | 0.79 | SC574-30 | 1590Z137PL | SCGM4-50 | 1590Z137G | |
| 1590Z137BK | Black | YES | 7.87 | 3.15 | 2.36 | 0.79 | SC574-31 | 1590Z137PL | SCGM4-50 | 1590Z137G | |
| 1590Z137GY | Gray | YES | 7.87 | 3.15 | 2.36 | 0.79 | SC574-32 | 1590Z137PL | SCGM4-50 | 1590Z137G | |
| 1590Z150 | Natural | YES | 8.70 | 4.74 | 3.17 | 0.81 | SC564-12 | 1590Z150PL | SCGM6-20 | 1590Z150G | |
| 1590Z150BK | Black | YES | 8.70 | 4.74 | 3.17 | 0.81 | SC564-12 | 1590Z150PL | SCGM6-20 | 1590Z150G | |
| 1590Z150GY | Gray | YES | 8.70 | 4.74 | 3.17 | 0.81 | SC564-12 | 1590Z150PL | SCGM6-20 | 1590Z150G | |
| 1590Z155 | Natural | YES | 8.70 | 4.74 | 3.54 | 1.18 | SC565-12 | 1590Z150PL | SCGM6-20 | 1590Z150G | |
| 1590Z155BK | Black | YES | 8.70 | 4.74 | 3.54 | 1.18 | SC565-12 | 1590Z150PL | SCGM6-20 | 1590Z150G | |
| 1590Z155GY | Gray | YES | 8.70 | 4.74 | 3.54 | 1.18 | SC565-12 | 1590Z150PL | SCGM6-20 | 1590Z150G | |
| 1590Z231 | Natural | YES | 9.06 | 7.87 | 4.33 | 0.79 | SC564-12 | 1590Z231PL | SCGM6-20 | 1590Z231G | |
| 1590Z231BK | Black | YES | 9.06 | 7.87 | 4.33 | 0.79 | SC564-12 | 1590Z231PL | SCGM6-20 | 1590Z231G | |
| 1590Z231GY | Gray | YES | 9.06 | 7.87 | 4.33 | 0.79 | SC564-12 | 1590Z231PL | SCGM6-20 | 1590Z231G | |
| 1590Z140 | Natural | YES | 9.85 | 3.14 | 2.24 | 0.59 | SC576-50 | 1590Z140PL | SCGM4-50 | 1590Z140G | |
| 1590Z140BK | Black | YES | 9.85 | 3.14 | 2.24 | 0.59 | SC576-50 | 1590Z140PL | SCGM4-50 | 1590Z140G | |
| 1590Z140GY | Gray | YES | 9.85 | 3.14 | 2.24 | 0.59 | SC576-50 | 1590Z140PL | SCGM4-50 | 1590Z140G | |
| 1590Z162 | Natural | YES | 10.24 | 6.30 | 3.53 | 0.79 | SC564-12 | 1590Z162PL | SCGM6-20 | 1590Z162G | |
| 1590Z162BK | Black | YES | 10.24 | 6.30 | 3.53 | 0.79 | SC564-12 | 1590Z162PL | SCGM6-20 | 1590Z162G | |
| 1590Z162GY | Gray | YES | 10.24 | 6.30 | 3.53 | 0.79 | SC564-12 | 1590Z162PL | SCGM6-20 | 1590Z162G | |
| 1590Z163 | Natural | YES | 10.24 | 6.31 | 6.30 | 0.79 | SC564-12 | 1590Z163PL | SCGM6-20 | 1590Z162G | |
| 1590Z163BK | Black | YES | 10.24 | 6.31 | 6.30 | 0.79 | SC564-12 | 1590Z163PL | SCGM6-20 | 1590Z162G | |
| 1590Z163GY | Gray | YES | 10.24 | 6.31 | 6.30 | 0.79 | SC564-12 | 1590Z163PL | SCGM6-20 | 1590Z162G | |
| 1590Z235 | Natural | YES | 13.02 | 9.09 | 4.42 | 0.78 | SC599-12 | 1590Z235PL | SCGM6-20 | 1590Z235G | |
| 1590Z235BK | Black | YES | 13.02 | 9.09 | 4.42 | 0.78 | SC599-12 | 1590Z235PL | SCGM6-20 | 1590Z235G | |
| 1590Z235GY | Gray | YES | 13.02 | 9.09 | 4.42 | 0.78 | SC599-12 | 1590Z235PL | SCGM6-20 | 1590Z235G | |
| 1590Z164 | Natural | YES | 14.17 | 4.72 | 3.15 | 0.79 | SC599-12 | 1590Z164PL | SCGM6-20 | 1590Z164G | |
| 1590Z164BK | Black | YES | 14.17 | 4.72 | 3.15 | 0.79 | SC599-12 | 1590Z164PL | SCGM6-20 | 1590Z164G | |
| 1590Z164GY | Gray | YES | 14.17 | 4.72 | 3.15 | 0.79 | SC599-12 | 1590Z164PL | SCGM6-20 | 1590Z164G | |
| 1590Z166 | Natural | YES | 14.17 | 6.30 | 3.54 | 0.79 | SC564-12 | 1590Z166PL | SCGM6-20 | 1590Z166G | |
| 1590Z166BK | Black | YES | 14.17 | 6.30 | 3.54 | 0.79 | SC564-12 | 1590Z166PL | SCGM6-20 | 1590Z166G | |
| 1590Z166GY | Gray | YES | 14.17 | 6.30 | 3.54 | 0.79 | SC564-12 | 1590Z166PL | SCGM6-20 | 1590Z166G | |
| 1590Z250 | Natural | YES | 15.75 | 9.06 | 7.09 | 0.79 | SC599-12 | 1590Z250PL | SCGM6-20 | 1590Z250G | |
| 1590Z250BK | Black | YES | 15.75 | 9.06 | 7.09 | 0.79 | SC599-12 | 1590Z250PL | SCGM6-20 | 1590Z250G | |
| 1590Z250GY | Gray | YES | 15.75 | 9.06 | 7.09 | 0.79 | SC599-12 | 1590Z250PL | SCGM6-20 | 1590Z250G | |

Tags: thick wall, diecast, nema, industrial, aluminum, inner panel, IP68

Data subject to change without notice

© 2024. Hammond Manufacturing Ltd. All rights reserved.