



SWITCH-DISCONNECTOR 125A, FRAME SIZE 2, 3-  
POLE FRONT OPERATING LEFT BASIC UNIT  
WITHOUT HANDLE BOX TERMINAL

Model		
product brand name		SENTRON
Product designation		Switching device
<b>Design of the product</b>		3KD switch disconnectors
<b>Design of the operating mechanism</b>		without
<b>Design of handle</b>		without
<b>Type of the driving mechanism / motor drive</b>		No
General technical data		
<b>Number of poles</b>		3
<b>Type of device</b>		fixed mounting
<b>circuit-breaker / Design</b>		3KD3
<b>Mechanical service life (switching cycles) / typical</b>		15 000
<b>Overvoltage category</b>		III
Voltage		
Insulation voltage / Rated value	V	1 000
Surge voltage resistance / Rated value	kV	8
Protection class		
<b>Protection class IP</b>		IP20
Protection class IP / on the front		IP20
Dissipation		
<b>Active power loss</b>		
<ul style="list-style-type: none"> <li>with conventional rated thermal current / per pole</li> </ul>	W	4.5

## Electricity

### Continuous current

• Rated value	A	125
• at 40 °C / Rated value	A	125
• at 45 °C / Rated value	A	125
• at 50 °C / Rated value	A	125
• at 55 °C / Rated value	A	125
• at 60 °C / Rated value	A	125
• at 65 °C / Rated value	A	125
• at 70 °C / Rated value	A	125

Short-time current resistance (I<sub>cw</sub>) / limited to 1 s /  
Rated value

kA 4

## Main circuit

### Operating power

• at AC-23 A / at 400 V / at 50/60 Hz / Rated value	kW	55
• at AC-23 A / at 500 V / at 50/60 Hz / Rated value	kW	75
• at AC-23 A / at 690 V / at 50/60 Hz / Rated value	kW	110

### Operating voltage

• with AC / at 50/60 Hz / Rated value	V	690
---------------------------------------	---	-----

## Auxiliary circuit

Number of CO contacts / for auxiliary contacts		4
Number of NC contacts / for auxiliary contacts		0
Number of NO contacts / for auxiliary contacts		0

## Suitability

### Suitability for use

• Main switch	Yes
• switch disconnecter	Yes
• EMERGENCY OFF switch	No
• safety switch	Yes
• maintenance/repair switch	Yes

## Product details

Product feature / interlock	No
<b>Product component</b>	
• Trip indicator	No
• Voltage trigger	No
• undervoltage release	No
• undervoltage release with leading contact	No
<b>Product expansion</b>	

- Auxiliary switch
- optional
  - motor drive
  - Voltage trigger

Yes

No

No

## Connections

### Type of electrical connection

- for main current circuit

Box terminal

## Mechanical Design

### Height

mm

126

### Width

mm

121

### Depth

mm

68

### mounting position

any

### Mounting type

Floor mounting and snap-on mounting to 35 mm standard mounting rail

### Mounting type

- front mounting with 4-hole attachment
- front mounting with central attachment
- rail mounting

No

No

Yes

## Environmental conditions

### Ambient temperature

- during operation / minimum
- during operation / maximum
- during storage / minimum
- during storage / maximum

°C

-25

°C

70

°C

-50

°C

80

## Certificates

Equipment marking / acc. to DIN EN 61346-2

Q

### General Product Approval

### Declaration of Conformity



## Further information

**Information- and Downloadcenter (Catalogs, Brochures,...)**

<http://www.siemens.com/lowvoltage/catalogs>

**Industry Mall (Online ordering system)**

<https://eb.automation.siemens.com/mall/en/WW/Catalog/Product/3KD32302NE100>

**Service&Support (Manuals, Certificates, Characteristics, FAQs,...)**

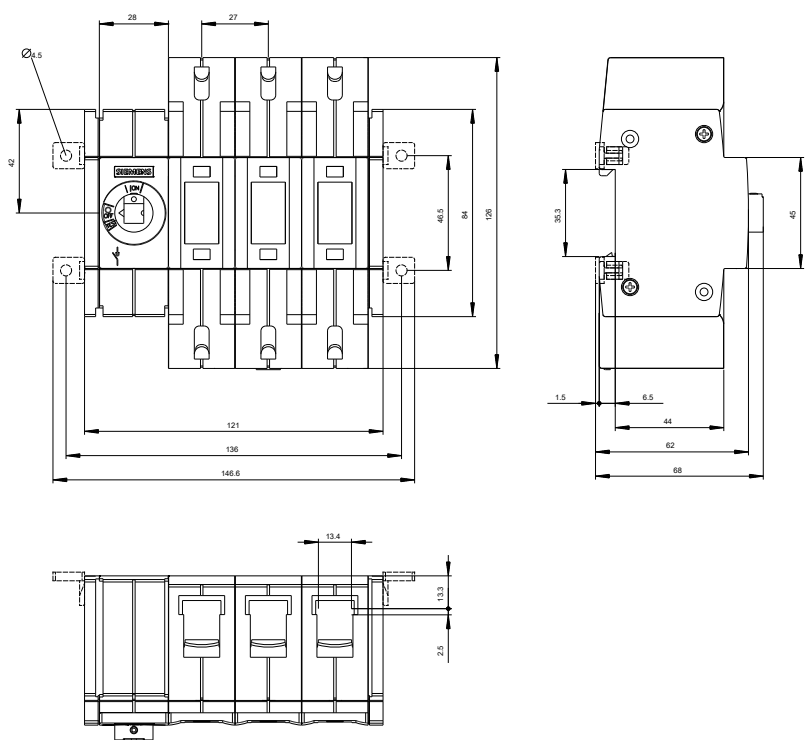
<http://support.automation.siemens.com/WW/view/en/3KD32302NE100/all>

**Image database (product images, 2D dimension drawings, 3D models, device circuit diagrams, ...)**

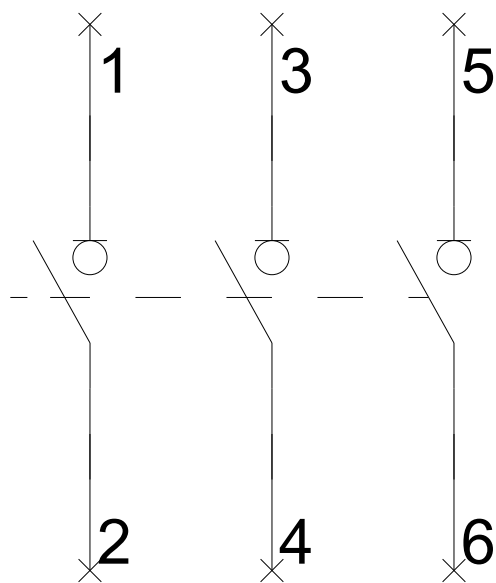
[http://www.automation.siemens.com/bilddb/cax\\_en.aspx?mlfb=3KD32302NE100](http://www.automation.siemens.com/bilddb/cax_en.aspx?mlfb=3KD32302NE100)

**CAX-Online-Generator**

<http://www.siemens.com/cax>



-Q



last modified:

11.03.2015